



## International Office

### Everest Biotech Ltd

Vector Laboratories, Inc.  
6737 Mowry Ave  
Newark, CA 94560  
United States

Customer Service:

[customerservice@vectorlabs.com](mailto:customerservice@vectorlabs.com)

Technical Service:

[technical@vectorlabs.com](mailto:technical@vectorlabs.com)

Tel: +1 (800) 227-6666

[www.everestbiotech.com](http://www.everestbiotech.com)

**Research Use Only. Not for  
diagnostic or therapeutic use.**

## EB13098 - Goat Anti-RSPO3 Antibody

Size: 100µg specific antibody in 200µl



### Target Protein

**Principal Names:**

**Official Symbol:** RSPO3

**Accession Number(s):** NP\_116173.2

**Human GeneID(s):** [84870](#)

### Immunogen

Peptide with sequence SGYYGTRYPDINKC, from the N Terminus of the protein sequence according to NP\_116173.2.

Please note the [peptide](#) is available for sale.

### Purification and Storage

Purified from goat serum by ammonium sulphate precipitation followed by antigen affinity chromatography using the immunizing peptide.

Supplied at 0.5 mg/ml in Tris saline, 0.02% sodium azide, pH7.3 with 0.5% bovine serum albumin.

Aliquot and store at -20°C. Minimize freezing and thawing.

### Applications Tested

**Peptide ELISA:** antibody detection limit dilution 1:128000.

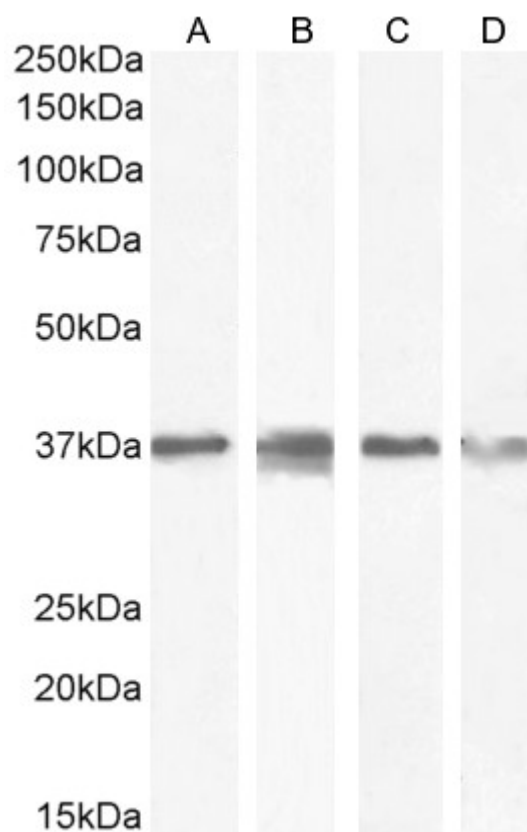
**Western blot:** Approx 37kDa band observed in lysates of cell lines HeLa, U2OS, A549 and KNRK, and in Mouse Brain lysates (calculated MW of 30.9kDa according to Human NP\_116173.2, and 31.4kDa according to Mouse NP\_082627.3, and Rat NP\_001094460.1). This molecular weight is observed by other sources, and was successfully blocked by incubation with the immunising peptide. Recommended concentration: 0.1-0.3µg/ml. Primary incubation 1 hour at room temperature.

**IHC:** Paraffin embedded Human Colon. Recommended concentration: 4-6µg/ml. Positive staining was also seen in paraffin embedded Human Kidney at 4µg/ml.

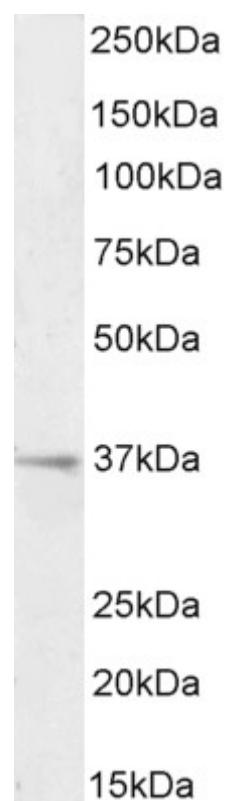
### Species Reactivity

**Tested:** Human, Mouse, Rat

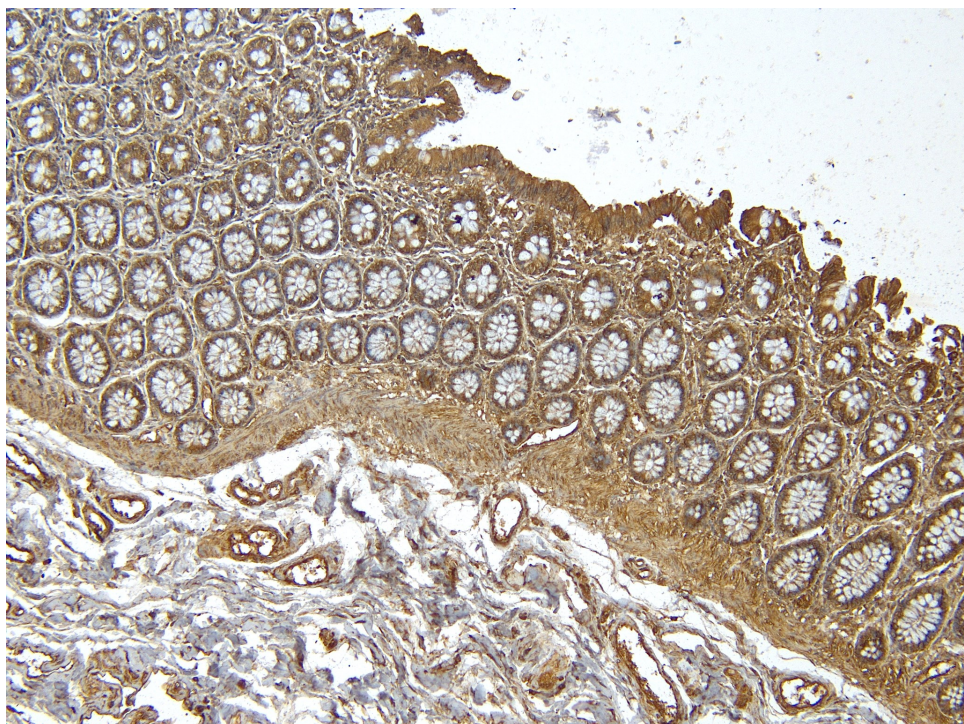
**Expected from sequence similarity:** Human, Mouse, Rat



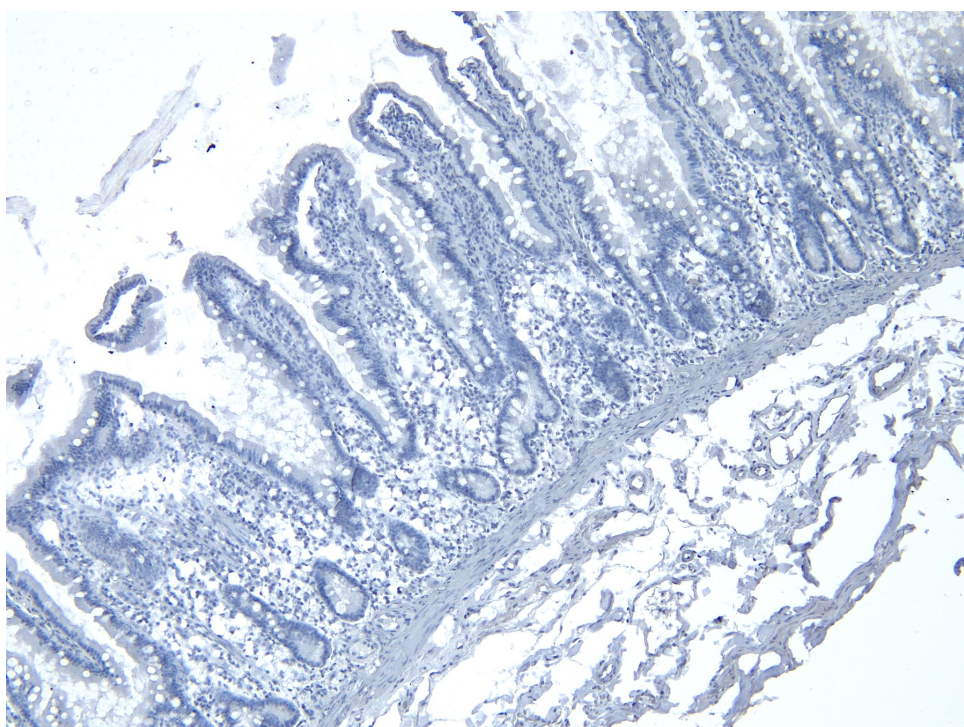
EB13098 (0.3 $\mu$ g/ml) staining of U2OS (A) and A549 (B) and (0.1 $\mu$ g/ml) HeLa (C) and KNRK (D) cell lysate (35 $\mu$ g protein in RIPA buffer). Detected by chemiluminescence.



EB13098 (0.1 $\mu$ g/ml) staining of Mouse Brain lysate (35 $\mu$ g protein in RIPA buffer). Detected by chemiluminescence.



EB13098 (4 $\mu$ g/ml) staining of paraffin embedded Human Colon. Heat induced antigen retrieval with citrate buffer pH 6, HRP-staining.



EB13098 Negative Control showing staining of paraffin embedded Human Colon, with no primary antibody.