



## International Office

### Everest Biotech Ltd

Vector Laboratories, Inc.  
6737 Mowry Ave  
Newark, CA 94560  
United States

Customer Service:

[customerservice@vectorlabs.com](mailto:customerservice@vectorlabs.com)

Technical Service:

[technical@vectorlabs.com](mailto:technical@vectorlabs.com)

Tel: +1 (800) 227-6666

[www.everestbiotech.com](http://www.everestbiotech.com)

**Research Use Only. Not for  
diagnostic or therapeutic use.**

## EB09468 - Goat Anti-RUTBC3 Antibody

Size: 100µg specific antibody in 200µl



### Target Protein

**Principal Names:** SGSM3, small G protein signaling modulator 3, DKFZp761D051, MAP, RUSC3, RUTBC3, RUN and SH3 containing 3, RUN and TBC1 domain containing 3, merlin binding protein, merlin-associated protein, small G protein signaling modulator 3 protein

**Official Symbol:** SGSM3

**Accession Number(s):** NP\_056520.2

**Human GeneID(s):** [27352](#)

**Non-Human GeneID(s):** 105835 (mouse), 362963 (rat)

### Immunogen

Peptide with sequence RDHENYVACSRSHRR, from the internal region of the protein sequence according to NP\_056520.2.

Please note the [peptide](#) is available for sale.

### Purification and Storage

Purified from goat serum by ammonium sulphate precipitation followed by antigen affinity chromatography using the immunizing peptide.

Supplied at 0.5 mg/ml in Tris saline, 0.02% sodium azide, pH7.3 with 0.5% bovine serum albumin.

Aliquot and store at -20°C. Minimize freezing and thawing.

### Applications Tested

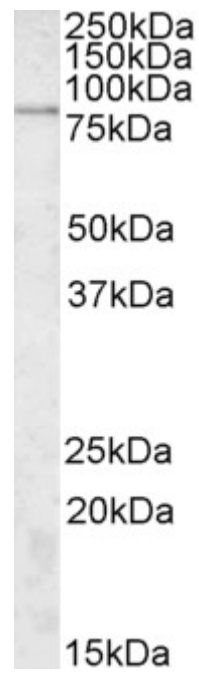
**Peptide ELISA:** antibody detection limit dilution 1:4000.

**Western blot:** Approx. 85kDa band observed in lysates of Human Lung carcinoma cell line A549 (calculated MW of 85.4kDa according to NP\_056520.2). Recommended concentration: 2-3µg/ml.

### Species Reactivity

**Tested:** Human

**Expected from sequence similarity:** Human, Mouse, Rat, Dog



EB09468 (2 $\mu$ g/ml) staining of A549 lysate (35 $\mu$ g protein in RIPA buffer). Primary incubation was 1 hour.  
Detected by chemiluminescence.