

UK Office

Everest Biotech Ltd

Cherwell Innovation Centre
77 Heyford Park
Upper Heyford
Oxfordshire
OX25 5HD
UK

Enquiries:

info@everestbiotech.com

Sales:

sales@everestbiotech.com

Tech support:

support@everestbiotech.com

Tel: +44 (0)1869 238326

www.everestbiotech.com

**Research Use Only. Not for
diagnostic or therapeutic use.**

EB06526 - Goat Anti-RXR gamma Antibody

Size: 100µg specific antibody in 200µl



Target Protein

Principal Names: RXRG, RXRC, NR2B3, retinoid X receptor, gamma

Official Symbol: RXRG

Accession Number(s): NP_008848.1

Human GeneID(s): [6258](#)

Important Comments: This antibody is expected to recognise an epitope corresponding to aa 213-226 of human RXR gamma protein (hinge region) and does not cross-react with either RXR alpha or beta.

Immunogen

Peptide with sequence RQRSRERAESAEC, from the internal region of the protein sequence according to NP_008848.1.

Please note the [peptide](#) is available for sale.

Purification and Storage

Purified from goat serum by ammonium sulphate precipitation followed by antigen affinity chromatography using the immunizing peptide.

Supplied at 0.5 mg/ml in Tris saline, 0.02% sodium azide, pH7.3 with 0.5% bovine serum albumin.

Aliquot and store at -20°C. Minimize freezing and thawing.

Applications Tested

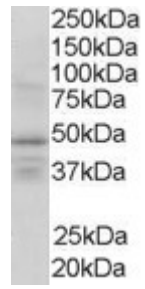
Peptide ELISA: antibody detection limit dilution 1:64000.

Western blot: Approx 48kDa band observed in Human Brain lysates (calculated MW of 50.9kDa according to NP_008848). Recommended concentration: 1-3µg/ml. Primary incubation was 1 hour. Some bands of unknown identity were also consistently observed around 37 kDa. These bands were successfully blocked by incubation with the immunising peptide.

Species Reactivity

Tested: Human

Expected from sequence similarity: Human, Mouse, Rat, Dog, Pig, Cow



EB06526 (1µg/ml) staining of Human Brain lysate (35µg protein in RIPA buffer). Detected by chemiluminescence.