



International Office

Everest Biotech Ltd

Vector Laboratories, Inc.
6737 Mowry Ave
Newark, CA 94560
United States

Customer Service:

customerservice@vectorlabs.com

Technical Service:

technical@vectorlabs.com

Tel: +1 (800) 227-6666

www.everestbiotech.com

**Research Use Only. Not for
diagnostic or therapeutic use.**

EB11514 - Goat Anti-S100A8 (aa17-27) Antibody

Size: 100µg specific antibody in 200µl



Target Protein

Principal Names: 60B8AG, CAGA, calgranulin A, calgranulin-A, calprotectin L1L subunit, CFAG, CGLA, CP-10, cystic fibrosis antigen, L1Ag, leukocyte L1 complex light chain, MA387, MIF, migration inhibitory factor-related protein 8, MRP8, MRP-8, NIF, OTTHUMP00000015329, P8, protein S100-A8, S100 calcium binding protein A8, S100 calcium-binding protein A8 (calgranulin A), S100A8, urinary stone protein band A

Official Symbol: S100A8

Accession Number(s): NP_002955.2; NP_001306125.1; NP_001306126.1;
NP_001306127.1

Human GeneID(s): [6279](#)

Immunogen

Peptide with sequence C-HKYSLIKGNFH, from the internal region of the protein sequence according to NP_002955.2; NP_001306125.1; NP_001306126.1; NP_001306127.1.

Please note the [peptide](#) is available for sale.

Purification and Storage

Purified from goat serum by ammonium sulphate precipitation followed by antigen affinity chromatography using the immunizing peptide.

Supplied at 0.5 mg/ml in Tris saline, 0.02% sodium azide, pH7.3 with 0.5% bovine serum albumin.

Aliquot and store at -20°C. Minimize freezing and thawing.

Applications Tested

Peptide ELISA: antibody detection limit dilution 1:1000.

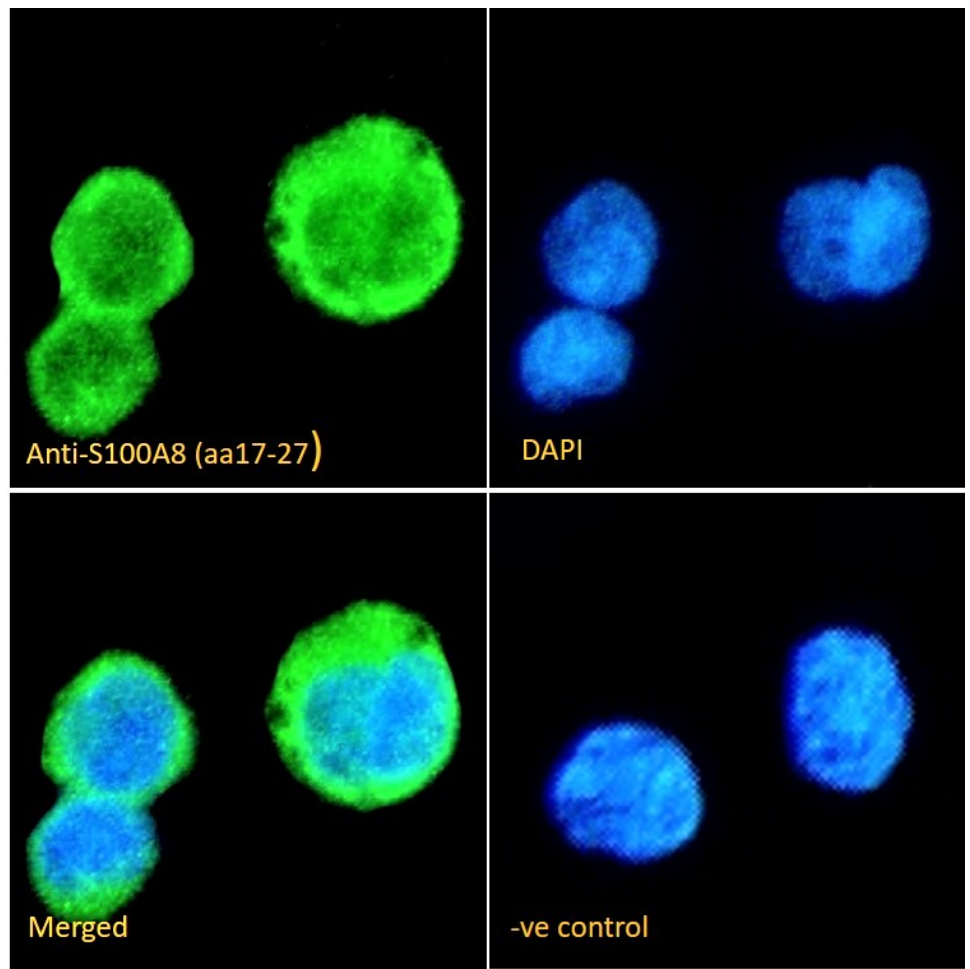
Immunofluorescence: Strong expression of the protein seen in the cytoplasm and membranes of THP-1 cells. Recommended concentration: 10µg/ml.

Flow Cytometry: Flow cytometric analysis of THP-1 cells. Recommended concentration: 10ug/ml.

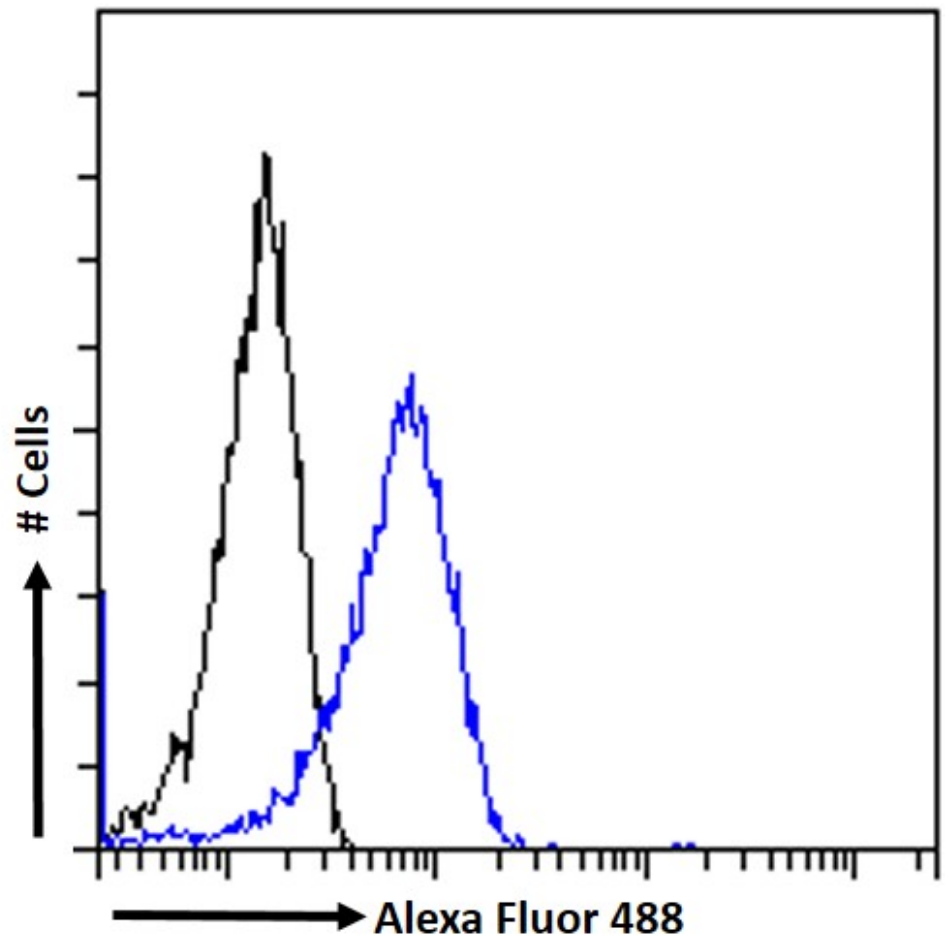
Species Reactivity

Tested: Human

Expected from sequence similarity: Human



EB11514 Immunofluorescence analysis of paraformaldehyde fixed THP-1 immobilized on Shi-fix™ plus cover-slips. Primary incubation 1hr (1:50 dilution) followed by Alexa Fluor® 488 secondary antibody (1:2000 dilution), showing membrane and cytoplasmic staining. The nuclear stain is DAPI (blue). Negative control: Anti-Goat IgG followed by Alexa Fluor® 488 secondary antibody.



EB11514 Flow cytometric analysis of paraformaldehyde fixed THP-1 cells (blue line) permeabilized with 0.5% Triton. Primary incubation 1hr (10ug/ml) followed by Alexa Fluor 488® conjugated secondary antibody (1ug/ml). IgG control: Unimmunized goat IgG (black line) followed by Alexa Fluor 488 secondary antibody.