

International Office

Everest Biotech Ltd

Vector Laboratories, Inc.
6737 Mowry Ave
Newark, CA 94560
United States

Customer Service:

customerservice@vectorlabs.com

Technical Service:

technical@vectorlabs.com

Tel: +1 (800) 227-6666

www.everestbiotech.com

**Research Use Only. Not for
diagnostic or therapeutic use.**

EB10252 - Goat Anti-S1PR2 Antibody

Size: 100µg specific antibody in 200µl



Target Protein

Principal Names: AGR16, EDG5, EDG-5, endothelial differentiation, sphingolipid G-protein-coupled receptor, 5, Gpcr13, H218, LPB2, S1P receptor EDG5, S1P2, sphingosine 1-phosphate receptor 2, sphingosine-1-phosphate receptor 2, S1PR2

Official Symbol: S1PR2

Accession Number(s): NP_004221.3

Human GeneID(s): [9294](#)

Non-Human GeneID(s): 14739 (mouse), 29415 (rat)

Immunogen

Peptide with sequence C-NYTKETLETQ, from the internal region of the protein sequence according to NP_004221.3.

Please note the [peptide](#) is available for sale.

Purification and Storage

Purified from goat serum by ammonium sulphate precipitation followed by antigen affinity chromatography using the immunizing peptide.

Supplied at 0.5 mg/ml in Tris saline, 0.02% sodium azide, pH7.3 with 0.5% bovine serum albumin.

Aliquot and store at -20°C. Minimize freezing and thawing.

Applications Tested

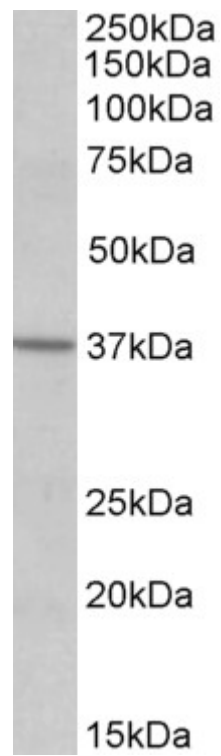
Peptide ELISA: antibody detection limit dilution 1:32000.

Western blot: Approx 37kDa band observed in Human Frontal Cortex and in Mouse Brain lysates (calculated MW of 38.9kDa according to NP_004221.3). Recommended concentration: 0.5-1.5µg/ml. Primary incubation was 1 hour.

Species Reactivity

Tested: Human, Mouse

Expected from sequence similarity: Human, Mouse, Rat, Dog



EB10252 (0.5 μ g/ml) staining of Human Frontal Cortex lysate (35 μ g protein in RIPA buffer). Detected by chemiluminescence.