



## UK Office

### Everest Biotech Ltd

Cherwell Innovation Centre  
77 Heyford Park  
Upper Heyford  
Oxfordshire  
OX25 5HD  
UK

Enquiries:

[info@everestbiotech.com](mailto:info@everestbiotech.com)

Sales:

[sales@everestbiotech.com](mailto:sales@everestbiotech.com)

Tech support:

[support@everestbiotech.com](mailto:support@everestbiotech.com)

Tel: +44 (0)1869 238326

Fax: +44 (0)1869 238327

## US Office

### Everest Biotech c/o Abcore

405 Maple Street, Suite A106  
Ramona,  
CA 92065  
USA

Inquiries:

[info@everestbiotech.com](mailto:info@everestbiotech.com)

Sales:

[usasales@everestbiotech.com](mailto:usasales@everestbiotech.com)

Tech support:

[support@everestbiotech.com](mailto:support@everestbiotech.com)

Tel: 888-320-4628 (toll-free)

Fax: 888-841-9041

[www.everestbiotech.com](http://www.everestbiotech.com)

**Research Use Only. Not for  
diagnostic or therapeutic use.**

## EB05336 - Goat Anti-Sak / STK18 / PLK4 Antibody

Size: 100µg specific antibody in 200µl



### Target Protein

**Principal Names:** PLK4, Sak, polo-like kinase 4 (Drosophila), serine/threonine kinase 18, SAK, Snk Akin Kinase, polo-like kinase 4, protein-serine/threonine kinase, STK18, serine/threonine protein kinase SAK, MCCRP2, STK 18

**Official Symbol:** PLK4

**Accession Number(s):** NP\_055079.3, NP\_001177728.1

**Human GeneID(s):** [10733](#)

### Immunogen

Peptide with sequence ATCIGEKIEDFKVGN, from the N Terminus of the protein sequence according to NP\_055079.3, NP\_001177728.1.

Please note the [peptide](#) is available for sale.

### Purification and Storage

Purified from goat serum by ammonium sulphate precipitation followed by antigen affinity chromatography using the immunizing peptide.

Supplied at 0.5 mg/ml in Tris saline, 0.02% sodium azide, pH7.3 with 0.5% bovine serum albumin.

Aliquot and store at -20°C. Minimize freezing and thawing.

### Applications Tested

**Peptide ELISA:** antibody detection limit dilution 1:32000.

**Western blot:** Approx 110kDa band observed in Human Colon lysates (calculated MW of 109kDa according to NP\_055079.3). Recommended concentration: 1-3µg/ml. Primary incubation was 1 hour.

**Immunofluorescence:** Strong expression of the protein seen in the cytoplasm of A431 and HeLa cells. Recommended concentration: 10µg/ml.

**Flow Cytometry:** Flow cytometric analysis of HeLa cells. Recommended concentration: 10ug/ml.

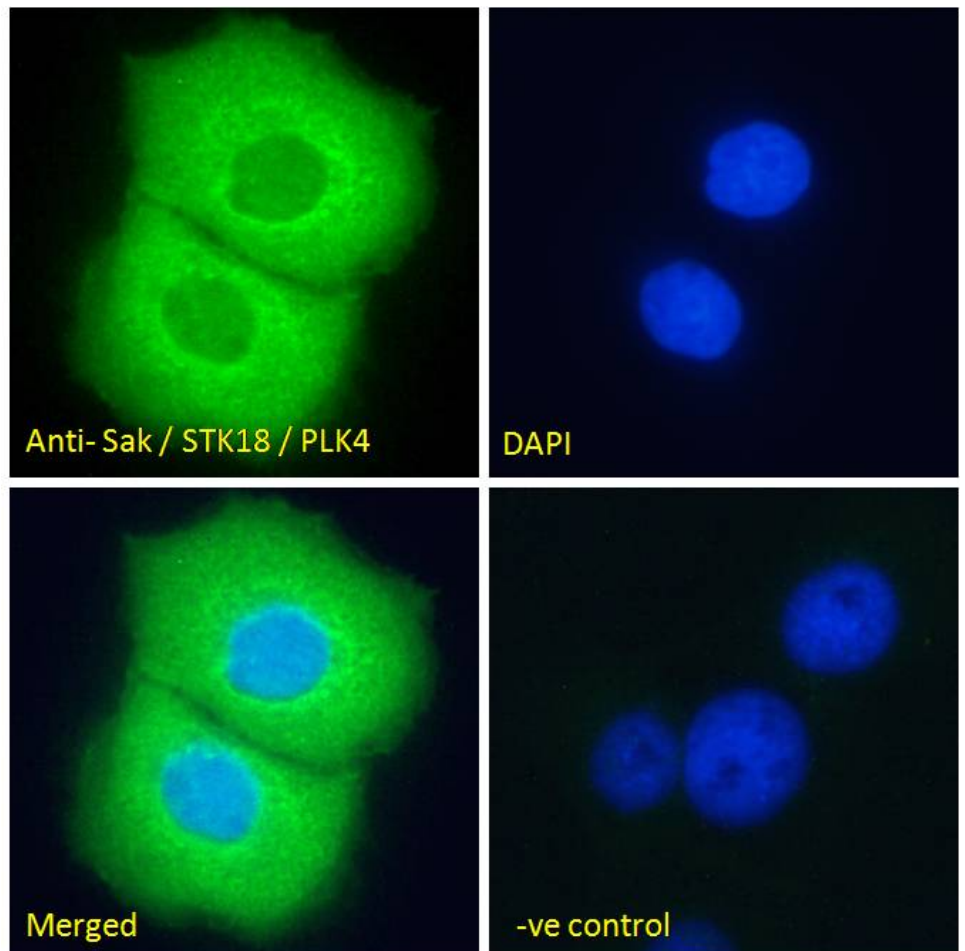
### Species Reactivity

**Tested:** Human

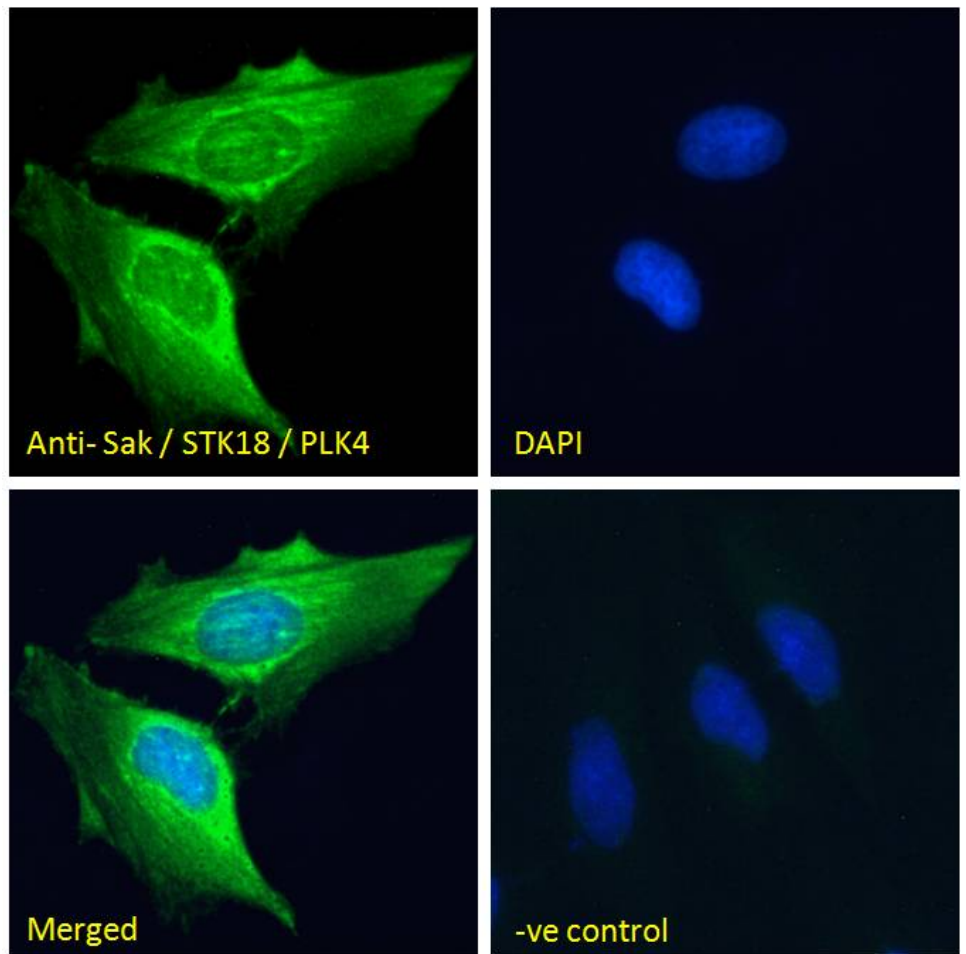
**Expected from sequence similarity:** Human, Dog, Cow



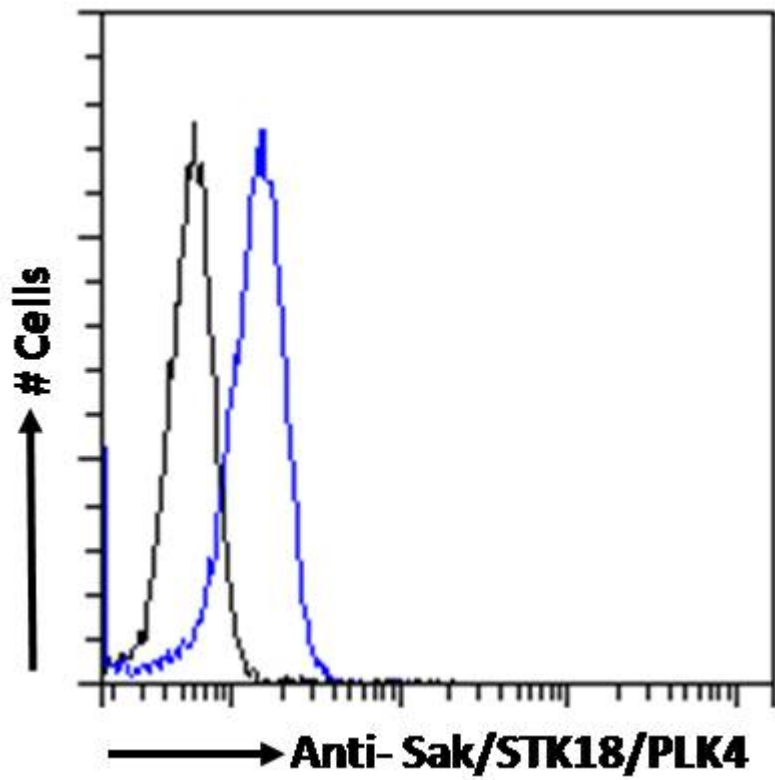
EB05336 (2 $\mu$ g/ml) staining of Human Colon lysate (35 $\mu$ g protein in RIPA buffer). Detected by chemiluminescence.



EB05336 Immunofluorescence analysis of paraformaldehyde fixed A431 cells, permeabilized with 0.15% Triton. Primary incubation 1hr (10ug/ml) followed by Alexa Fluor 488 secondary antibody (2ug/ml), showing cytoplasmic staining. The nuclear stain is DAPI (blue). Negative control: Unimmunized goat IgG (10ug/ml) followed by Alexa Fluor 488 secondary antibody (2ug/ml).



EB05336 Immunofluorescence analysis of paraformaldehyde fixed HeLa cells, permeabilized with 0.15% Triton. Primary incubation 1hr (10ug/ml) followed by Alexa Fluor 488 secondary antibody (2ug/ml), showing cytoplasmic staining. The nuclear stain is DAPI (blue). Negative control: Unimmunized goat IgG (10ug/ml) followed by Alexa Fluor 488 secondary antibody (2ug/ml).



EB05336 Flow cytometric analysis of paraformaldehyde fixed HeLa cells (blue line), permeabilized with 0.5% Triton. Primary incubation 1hr (10ug/ml) followed by Alexa Fluor 488 secondary antibody (1ug/ml). IgG control: Unimmunized goat IgG (black line) followed by Alexa Fluor 488 secondary antibody.