

## UK Office

### Everest Biotech Ltd

Cherwell Innovation Centre  
77 Heyford Park  
Upper Heyford  
Oxfordshire  
OX25 5HD  
UK

Enquiries:

[info@everestbiotech.com](mailto:info@everestbiotech.com)

Sales:

[sales@everestbiotech.com](mailto:sales@everestbiotech.com)

Tech support:

[support@everestbiotech.com](mailto:support@everestbiotech.com)

Tel: +44 (0)1869 238326

[www.everestbiotech.com](http://www.everestbiotech.com)

**Research Use Only. Not for  
diagnostic or therapeutic use.**

## EB10684 - Goat Anti-Sap30l (mouse) Antibody

Size: 100µg specific antibody in 200µl



### Target Protein

**Principal Names:** Sap30l, SAP30-like, RP23-268K22.3, 2310079P12Rik, AF006998, L55, MGC151406, MGC151408, OTTMUSP00000005883, sin3 corepressor complex subunit SAP30L, sin3-associated protein p30-like, sin3A-associated protein p30-

**Official Symbol:** Sap30L

**Accession Number(s):** NP\_001074637.1

**Human GeneID(s):** [79685](#)

**Non-Human GeneID(s):** 50724 (mouse), 360531 (rat)

### Immunogen

Peptide with sequence C-RLDQKSEGSKQLE, from the C Terminus of the protein sequence according to NP\_001074637.1.

Please note the [peptide](#) is available for sale.

### Purification and Storage

Purified from goat serum by ammonium sulphate precipitation followed by antigen affinity chromatography using the immunizing peptide.

Supplied at 0.5 mg/ml in Tris saline, 0.02% sodium azide, pH7.3 with 0.5% bovine serum albumin.

Aliquot and store at -20°C. Minimize freezing and thawing.

### Applications Tested

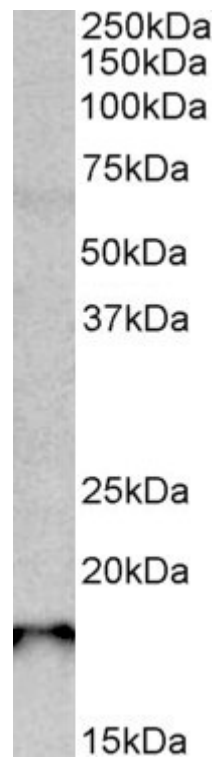
**Peptide ELISA:** antibody detection limit dilution 1:32000.

**Western blot:** Approx 18kDa band observed in Rat Spleen lysates (calculated MW of 20.8kDa according to Rat XP\_340804.4). Recommended concentration: 0.3-1µg/ml.

### Species Reactivity

**Tested:** Rat

**Expected from sequence similarity:** Human, Mouse, Rat, Dog



EB10684 (0.3g/ml) staining of Rat Pancreas lysate (35 $\mu$ g protein in RIPA buffer). Primary incubation was 1 hour. Detected by chemiluminescence.