



## UK Office

### Everest Biotech Ltd

Cherwell Innovation Centre  
77 Heyford Park  
Upper Heyford  
Oxfordshire  
OX25 5HD  
UK

Enquiries:

[info@everestbiotech.com](mailto:info@everestbiotech.com)

Sales:

[sales@everestbiotech.com](mailto:sales@everestbiotech.com)

Tech support:

[support@everestbiotech.com](mailto:support@everestbiotech.com)

Tel: +44 (0)1869 238326

Fax: +44 (0)1869 238327

## US Office

### Everest Biotech c/o Abcore

405 Maple Street, Suite A106  
Ramona,  
CA 92065  
USA

Inquiries:

[info@everestbiotech.com](mailto:info@everestbiotech.com)

Sales:

[usasales@everestbiotech.com](mailto:usasales@everestbiotech.com)

Tech support:

[support@everestbiotech.com](mailto:support@everestbiotech.com)

Tel: 888-320-4628 (toll-free)

Fax: 888-841-9041

[www.everestbiotech.com](http://www.everestbiotech.com)

**Research Use Only. Not for  
diagnostic or therapeutic use.**

## EB08906 - Goat Anti-SAR1 Antibody

Size: 100µg specific antibody in 200µl



### Target Protein

**Principal Names:** SAR1A, SAR1 gene homolog A (S. cerevisiae), SAR1, SARA1, Sara, masra2, OTTHUMP00000060603, SAR1a gene homolog 1

**Official Symbol:** SAR1A

**Accession Number(s):** NP\_064535.1

**Human GeneID(s):** [56681](#)

**Non-Human GeneID(s):** 20224 (mouse), 361842 (rat)

### Immunogen

Peptide with sequence C-HSRLVESKVELNA, from the internal region of the protein sequence according to NP\_064535.1.

Please note the [peptide](#) is available for sale.

### Purification and Storage

Purified from goat serum by ammonium sulphate precipitation followed by antigen affinity chromatography using the immunizing peptide.

Supplied at 0.5 mg/ml in Tris saline, 0.02% sodium azide, pH7.3 with 0.5% bovine serum albumin.

Aliquot and store at -20°C. Minimize freezing and thawing.

### Applications Tested

**Peptide ELISA:** antibody detection limit dilution 1:32000.

**Western blot:** Approx. 23 kDa band observed in lysates of NIH3T3 (calculated MW of 22.4 kDa according to Human NP\_064535.1 and to Mouse NP\_033146.1).

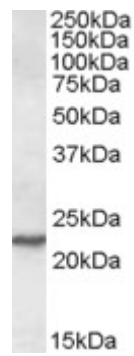
Recommended concentration: 0.1-0.3µg/ml. Primary incubation was 1 hour.

**IHC:** Paraffin embedded Human Skin and Small Intestine. Recommended concentration: 3.75µg/ml.

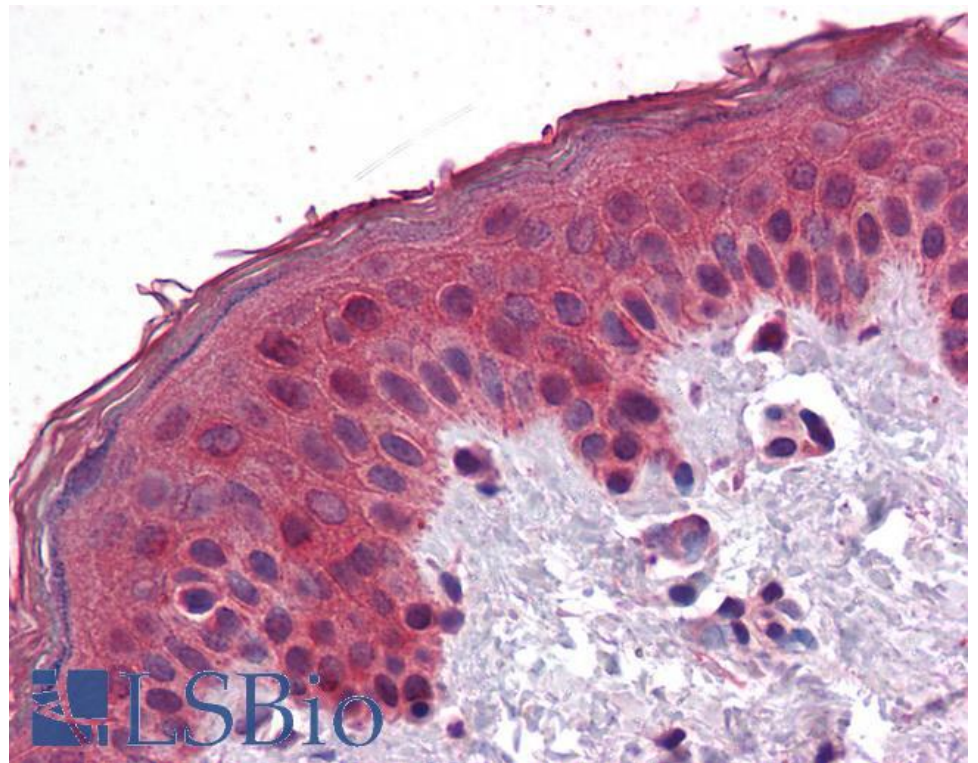
### Species Reactivity

**Tested:** Mouse, Human

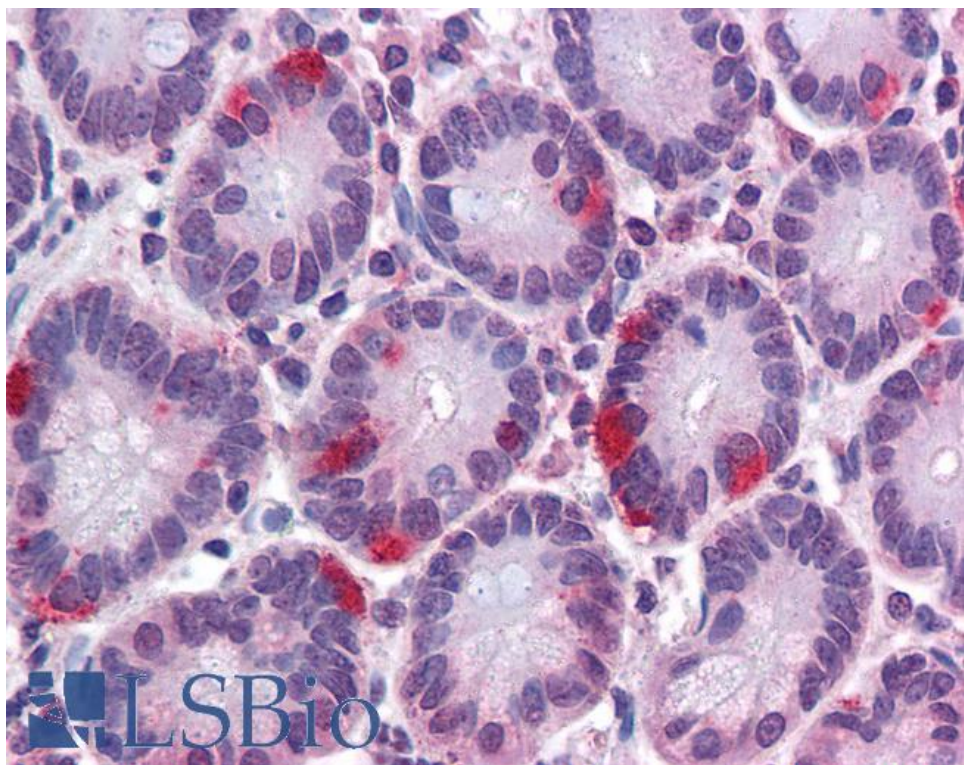
**Expected from sequence similarity:** Human, Mouse, Rat



EB08906 (0.1 $\mu$ g/ml) staining of NIH3T3 lysate (35 $\mu$ g protein in RIPA buffer). Detected by chemiluminescence.



EB08906 (3.75 $\mu$ g/ml) staining of paraffin embedded Human Skin. Steamed antigen retrieval with citrate buffer pH 6, AP-staining.



EB08906 (3.75µg/ml) staining of paraffin embedded Human Small Intestine. Steamed antigen retrieval with citrate buffer pH 6, AP-staining.