



International Office

Everest Biotech Ltd

Vector Laboratories, Inc.
6737 Mowry Ave
Newark, CA 94560
United States

Customer Service:

customerservice@vectorlabs.com

Technical Service:

technical@vectorlabs.com

Tel: +1 (800) 227-6666

www.everestbiotech.com

**Research Use Only. Not for
diagnostic or therapeutic use.**

EB13100 - Goat Anti-SARS CoV2 Spike protein-RBD Antibody

Size: 100µg specific antibody in 200µl



Target Protein

Principal Names: Severe acute respiratory syndrome coronavirus 2 (SARS-CoV-2)
isolate Wuhan-Hu-1

Official Symbol: SARS-CoV-2

Accession Number(s): NC_045512.2; MN908947

Important Comments: 0.2mg in 0.5mg/ml

Immunogen

Peptide with sequence C-10 aa long, RBD of spike protein, from the internal region of the protein sequence according to NC_045512.2; MN908947.

Please note the [peptide](#) is available for sale.

Purification and Storage

Purified from goat serum by ammonium sulphate precipitation followed by antigen affinity chromatography using the immunizing peptide.

Phosphate buffer saline, PH 7.3, with 0.02% sodium azide as preservative.

Aliquot and store at -20°C. Minimize freezing and thawing.

Applications Tested

Peptide ELISA: antibody detection limit dilution 1:2000.

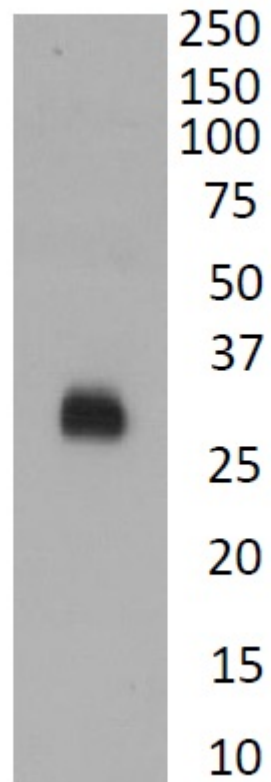
Western blot: Approx. 30 kDa band observed in recombinant RBD protein.

Recommended concentration: 1µg/ml. Primary incubation was 1 hour.

Species Reactivity

Tested: Viral

Expected from sequence similarity: Human Coronavirus



EB13100 Anti SARS-CoV2 RBD staining of recombinant RBD protein (1µg/ml). Detected by chemiluminescence