



UK Office

Everest Biotech Ltd

Cherwell Innovation Centre
77 Heyford Park
Upper Heyford
Oxfordshire
OX25 5HD
UK

Enquiries:

info@everestbiotech.com

Sales:

sales@everestbiotech.com

Tech support:

support@everestbiotech.com

Tel: +44 (0)1869 238326

Fax: +44 (0)1869 238327

US Office

Everest Biotech c/o Abcore

405 Maple Street, Suite A106
Ramona,
CA 92065
USA

Inquiries:

info@everestbiotech.com

Sales:

usasales@everestbiotech.com

Tech support:

support@everestbiotech.com

Tel: 888-320-4628 (toll-free)

Fax: 888-841-9041

www.everestbiotech.com

**Research Use Only. Not for
diagnostic or therapeutic use.**

EB12301 - Goat Anti-SCARB1 / SR-BI (aa238-250) Antibody

Size: 100µg specific antibody in 200µl



Target Protein

Principal Names: SCARB1, scavenger receptor class B, member 1, CD36L1, CLA-1, CLA1, HDLQTL6, SR-BI, SRB1, CD36 and LIMPII analogous 1, CD36 antigen (collagen type I receptor, thrombospondin receptor)-like 1, scavenger receptor class B member 1, scavenger receptor class B type III

Official Symbol: SCARB1

Accession Number(s): NP_005496.4; NP_001076428.1

Human GeneID(s): [949](#)

Important Comments: This antibody is expected to recognize both reported isoforms (NP_005496.4; NP_001076428.1).

Immunogen

Peptide with sequence C-NGLSKVDFWHSDQ, from the internal region of the protein sequence according to NP_005496.4; NP_001076428.1.

Please note the [peptide](#) is available for sale.

Purification and Storage

Purified from goat serum by ammonium sulphate precipitation followed by antigen affinity chromatography using the immunizing peptide.

Supplied at 0.5 mg/ml in Tris saline, 0.02% sodium azide, pH7.3 with 0.5% bovine serum albumin.

Aliquot and store at -20°C. Minimize freezing and thawing.

Applications Tested

Peptide ELISA: antibody detection limit dilution 1:128000.

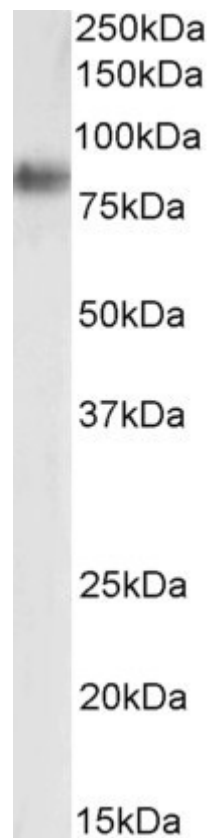
Western blot: Approx 85kDa band observed in Human Adrenal gland lysates (calculated MW of 57.0kDa according to NP_005496.4). Recommended concentration: 0.01-0.03µg/ml.

IHC: Paraffin embedded Human Testis. Recommended concentration: 5µg/ml.

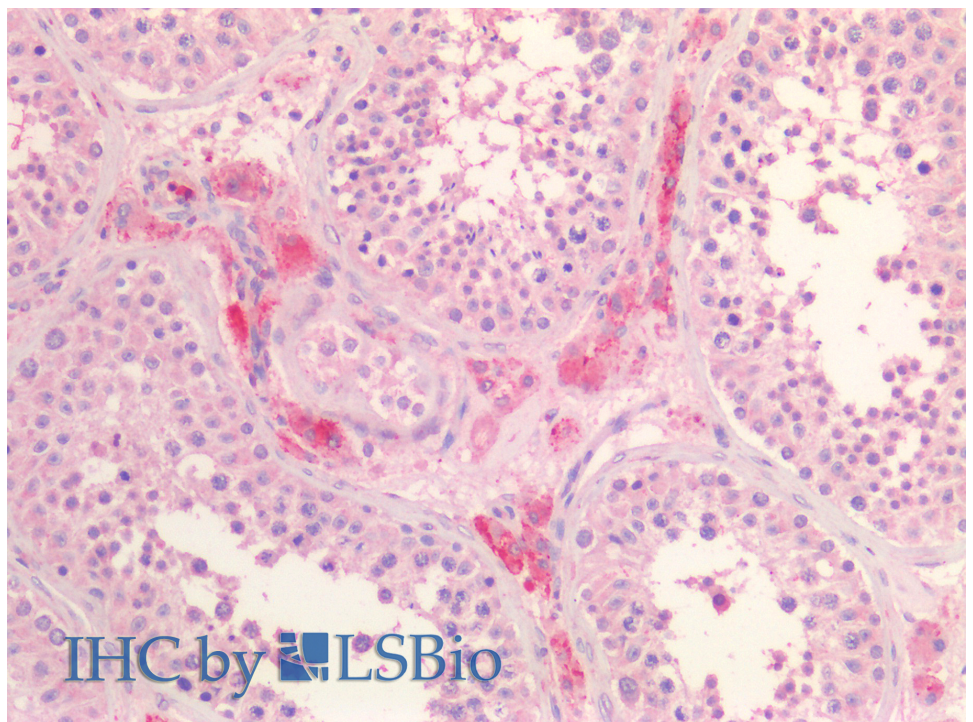
Species Reactivity

Tested: Human

Expected from sequence similarity: Human



EB12301 (0.03 μ g/ml) staining of Human Adrenal Gland lysate (35 μ g protein in RIPA buffer). Primary incubation was 1 hour. Detected by chemiluminescence.



EB12301 (5 μ g/ml) staining of paraffin embedded Human Testis. Steamed antigen retrieval with citrate buffer pH 6, AP-staining.