

UK Office

Everest Biotech Ltd

Cherwell Innovation Centre
77 Heyford Park
Upper Heyford
Oxfordshire
OX25 5HD
UK

Enquiries:

info@everestbiotech.com

Sales:

sales@everestbiotech.com

Tech support:

support@everestbiotech.com

Tel: +44 (0)1869 238326

www.everestbiotech.com

**Research Use Only. Not for
diagnostic or therapeutic use.**

EB06485 - Goat Anti-SCARF1 / SREC Antibody

Size: 100µg specific antibody in 200µl



Target Protein

Principal Names: SCARF1, SREC, KIAA0149, MGC47738, scavenger receptor class F, member 1, acetyl LDL receptor, scavenger receptor expressed by endothelial cells

Official Symbol: SCARF1

Accession Number(s): NP_003684.2; NP_663325.1; NP_663327.2

Human GeneID(s): [8578](#)

Important Comments: This antibody is expected to recognise all three reported isoforms (NP_003684.2; NP_663325.1; NP_663327.2). Epitope corresponding to aa 20-31, mapping to the mature human SCARF1 / SREC1 protein.

Immunogen

Peptide with sequence SELDPKGQHVC, from the internal region of the protein sequence according to NP_003684.2; NP_663325.1; NP_663327.2.

Please note the [peptide](#) is available for sale.

Purification and Storage

Purified from goat serum by ammonium sulphate precipitation followed by antigen affinity chromatography using the immunizing peptide.

Supplied at 0.5 mg/ml in Tris saline, 0.02% sodium azide, pH7.3 with 0.5% bovine serum albumin.

Aliquot and store at -20°C. Minimize freezing and thawing.

Applications Tested

Peptide ELISA: antibody detection limit dilution 1:64000.

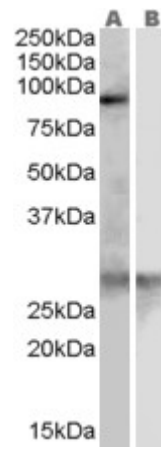
Western blot: Approx 85-90kDa band observed in Human Heart lysates (calculated MW of 87.4kDa according to NP_003684.2). Recommended concentration: 0.3-1.0µg/ml.

Primary incubation was 1 hour. An additional faint band of 28kDa was consistently observed, however this band was not blocked by the immunizing peptide and it is therefore a non-specific signal.

Species Reactivity

Tested: Human

Expected from sequence similarity: Human



EB06485 (0.3 μ g/ml) staining of Human Heart lysate (35 μ g protein in RIPA buffer) with (B) and without (A) blocking with the immunising peptide. Detected by chemiluminescence.