



## UK Office

### Everest Biotech Ltd

Cherwell Innovation Centre  
77 Heyford Park  
Upper Heyford  
Oxfordshire  
OX25 5HD  
UK

Enquiries:

[info@everestbiotech.com](mailto:info@everestbiotech.com)

Sales:

[sales@everestbiotech.com](mailto:sales@everestbiotech.com)

Tech support:

[support@everestbiotech.com](mailto:support@everestbiotech.com)

Tel: +44 (0)1869 238326

Fax: +44 (0)1869 238327

## US Office

### Everest Biotech c/o Abcore

405 Maple Street, Suite A106  
Ramona,  
CA 92065  
USA

Inquiries:

[info@everestbiotech.com](mailto:info@everestbiotech.com)

Sales:

[usasales@everestbiotech.com](mailto:usasales@everestbiotech.com)

Tech support:

[support@everestbiotech.com](mailto:support@everestbiotech.com)

Tel: 888-320-4628 (toll-free)

Fax: 888-841-9041

[www.everestbiotech.com](http://www.everestbiotech.com)

**Research Use Only. Not for  
diagnostic or therapeutic use.**

## EB06912 - Goat Anti-SCN5A Antibody

Size: 100µg specific antibody in 200µl



### Target Protein

**Principal Names:** SCN5A, CDCD2, CMD1E, CMPD2, HB1, HB2, HBBD, ICCD, HH1, IVF, LQT3, SSS1, PFHB1, SSS1, sodium channel, voltage-gated, type V, alpha subunit, Nav1.5, sodium channel, voltage-gated, type V, alpha (long QT syndrome 3), cardiac sodium channel alpha subunit, sodium channel, voltage-gated, type V, alpha polypeptide (long (electrocardiographic) QT syndrome 3), VF1, cardiac tetrodotoxin-insensitive voltage-dependent sodium channel alpha subunit, sodium channel protein type V alpha subunit, voltage-gated sodium channel type V alpha

**Official Symbol:** SCN5A

**Accession Number(s):** NP\_932173.1; NP\_000326.2; NP\_001092874.1; NP\_001092875.1; NP\_001153632.1; NP\_001153633.1

**Human GenelD(s):** [6331](#)

**Important Comments:** This antibody is expected to recognise all reported isoforms (NP\_932173.1; NP\_000326.2; NP\_001092874.1; NP\_001092875.1).

### Immunogen

Peptide with sequence C-ETDDQSPEKIN, from the internal region of the protein sequence according to NP\_932173.1; NP\_000326.2; NP\_001092874.1; NP\_001092875.1; NP\_001153632.1; NP\_001153633.1.

Please note the [peptide](#) is available for sale.

### Purification and Storage

Purified from goat serum by ammonium sulphate precipitation followed by antigen affinity chromatography using the immunizing peptide.

Supplied at 0.5 mg/ml in Tris saline, 0.02% sodium azide, pH7.3 with 0.5% bovine serum albumin.

Aliquot and store at -20°C. Minimize freezing and thawing.

### Applications Tested

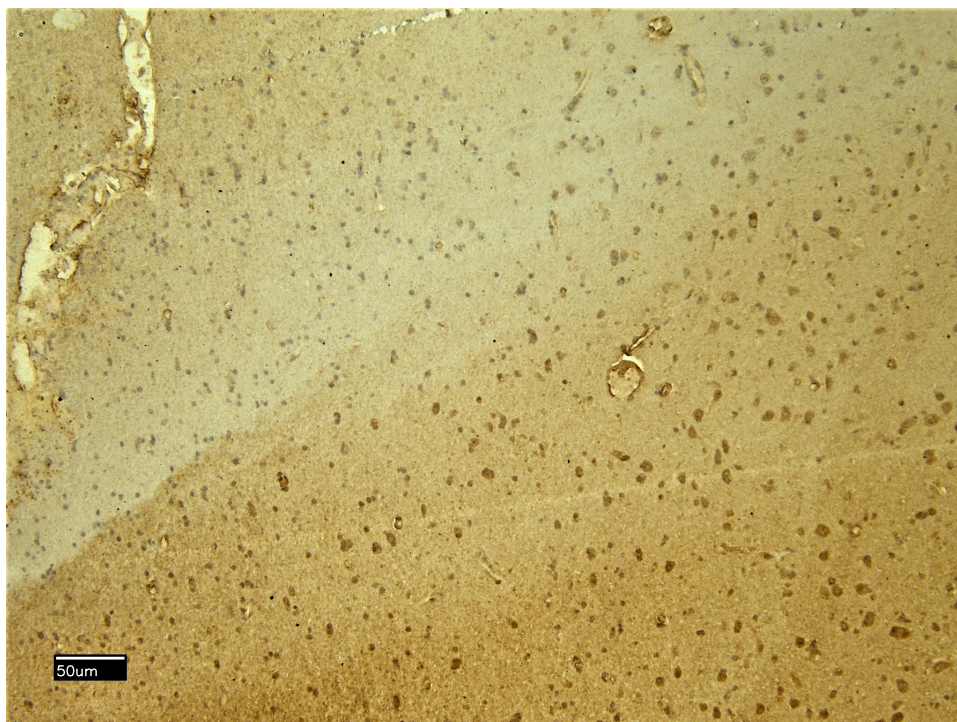
**Peptide ELISA:** antibody detection limit dilution 1:2000.

**IHC:** Paraffin embedded Human Brain (Cortex). Recommended concentration: 5-8µg/ml.

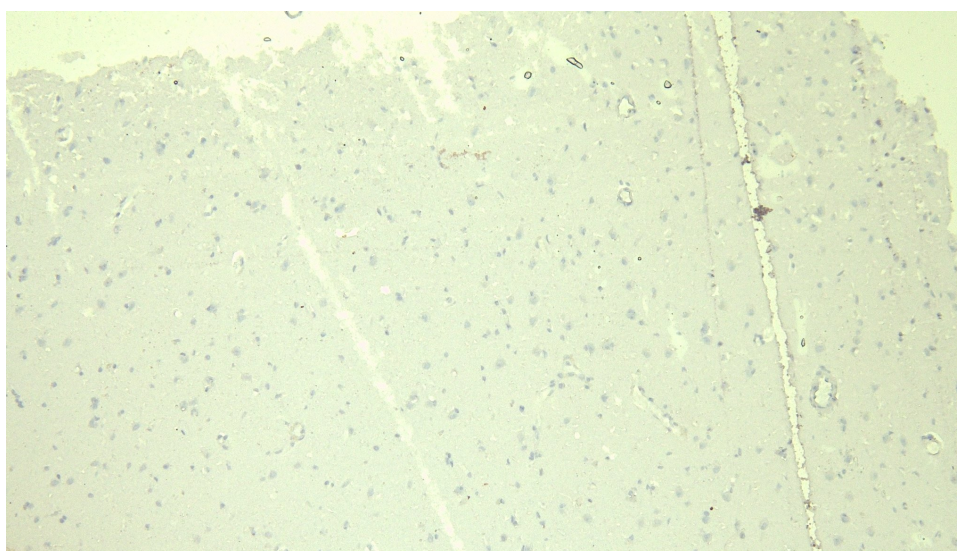
### Species Reactivity

**Tested:** Human

**Expected from sequence similarity:** Human, Mouse, Rat, Dog, Cow



EB06912 (5µg/ml) staining of paraffin embedded Human Cortex. Heat induced antigen retrieval with citrate buffer pH 6, HRP-staining.



EB06912 Negative Control showing staining of paraffin embedded Human Cortex, with no primary antibody.