



UK Office

Everest Biotech Ltd

Cherwell Innovation Centre
77 Heyford Park
Upper Heyford
Oxfordshire
OX25 5HD
UK

Enquiries:

info@everestbiotech.com

Sales:

sales@everestbiotech.com

Tech support:

support@everestbiotech.com

Tel: +44 (0)1869 238326

Fax: +44 (0)1869 238327

US Office

Everest Biotech c/o Abcore

405 Maple Street, Suite A106
Ramona,
CA 92065
USA

Inquiries:

info@everestbiotech.com

Sales:

usasales@everestbiotech.com

Tech support:

support@everestbiotech.com

Tel: 888-320-4628 (toll-free)

Fax: 888-841-9041

www.everestbiotech.com

**Research Use Only. Not for
diagnostic or therapeutic use.**

EB06251 - Goat Anti-Scribble / Vartul Antibody

Size: 100µg specific antibody in 200µl



Target Protein

Principal Names: SCRIB, scribbled homolog (Drosophila), Circletail homolog (Mouse), CRIB1, SCRIB1, SCRIB1, Vartul, KIAA0147, scribble

Official Symbol: SCRIB

Accession Number(s): NP_874365.2; NP_056171.2

Human GeneID(s): [23513](#)

Non-Human GeneID(s): 105782 (mouse)

Immunogen

Peptide with sequence C-VRPGRRGLGPVPS, from the C Terminus of the protein sequence according to NP_874365.2; NP_056171.2.

Please note the [peptide](#) is available for sale.

Purification and Storage

Purified from goat serum by ammonium sulphate precipitation followed by antigen affinity chromatography using the immunizing peptide.

Supplied at 0.5 mg/ml in Tris saline, 0.02% sodium azide, pH7.3 with 0.5% bovine serum albumin.

Aliquot and store at -20°C. Minimize freezing and thawing.

Applications Tested

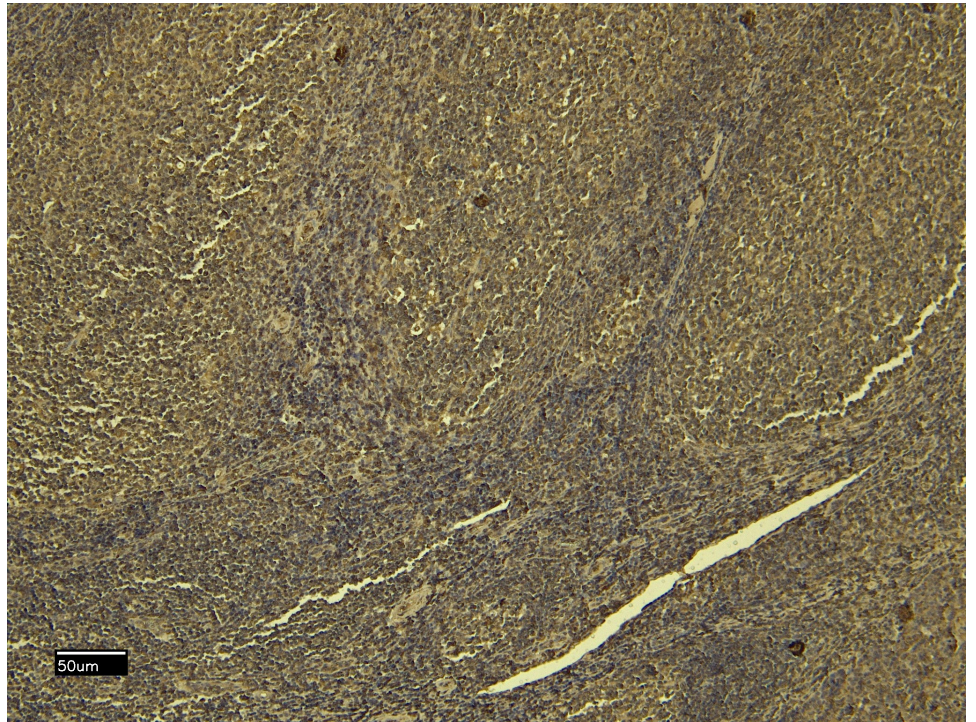
Peptide ELISA: antibody detection limit dilution 1:8000.

IHC: Paraffin embedded Human Tonsil. Recommended concentration: 6-8µg/ml.

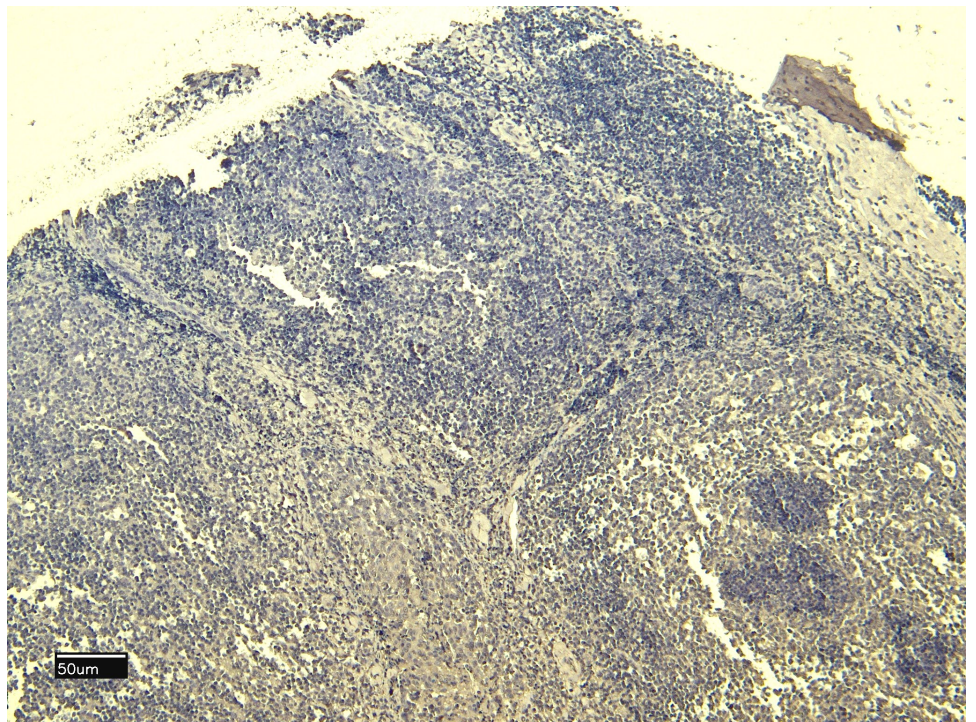
Species Reactivity

Tested: Human

Expected from sequence similarity: Human, Mouse, Rat



EB06251 (8µg/ml) staining of paraffin embedded Human Tonsil. Heat induced antigen retrieval with citrate buffer pH 6, HRP-staining.



EB06251 Negative Control showing staining of paraffin embedded Human Tonsil, with no primary antibody.