



## UK Office

### Everest Biotech Ltd

Cherwell Innovation Centre  
77 Heyford Park  
Upper Heyford  
Oxfordshire  
OX25 5HD  
UK

Enquiries:

[info@everestbiotech.com](mailto:info@everestbiotech.com)

Sales:

[sales@everestbiotech.com](mailto:sales@everestbiotech.com)

Tech support:

[support@everestbiotech.com](mailto:support@everestbiotech.com)

Tel: +44 (0)1869 238326

[www.everestbiotech.com](http://www.everestbiotech.com)

**Research Use Only. Not for  
diagnostic or therapeutic use.**

## EB06868 - Goat Anti-SDHB Antibody

Size: 100µg specific antibody in 200µl



### Target Protein

**Principal Names:** SDHB, IP, SDH, SDH1, SDHIP, succinate dehydrogenase complex, subunit B, iron sulfur (Ip), OTTHUMP00000044624, iron-sulfur subunit, FLJ92337, SDH2, CWS2, PGL4

**Official Symbol:** SDHB

**Accession Number(s):** NP\_002991.2

**Human GeneID(s):** [6390](#)

### Immunogen

Peptide with sequence C-ATYKEKKASV, from the C Terminus of the protein sequence according to NP\_002991.2.

Please note the [peptide](#) is available for sale.

### Purification and Storage

Purified from goat serum by ammonium sulphate precipitation followed by antigen affinity chromatography using the immunizing peptide.

Supplied at 0.5 mg/ml in Tris saline, 0.02% sodium azide, pH7.3 with 0.5% bovine serum albumin.

Aliquot and store at -20°C. Minimize freezing and thawing.

### Applications Tested

**Peptide ELISA:** antibody detection limit dilution 1:8000.

**Western blot:** Approx 28-30kDa band observed in lysates of cell lines HEK293, Jurkat and HeLa (calculated MW of 31.6kDa according to NP\_002991.2). Recommended concentration: 0.1-0.3µg/ml. Primary incubation 1 hour at room temperature.

**IHC:** Paraffin embedded Human Kidney. Recommended concentration: 6-8µg/ml.

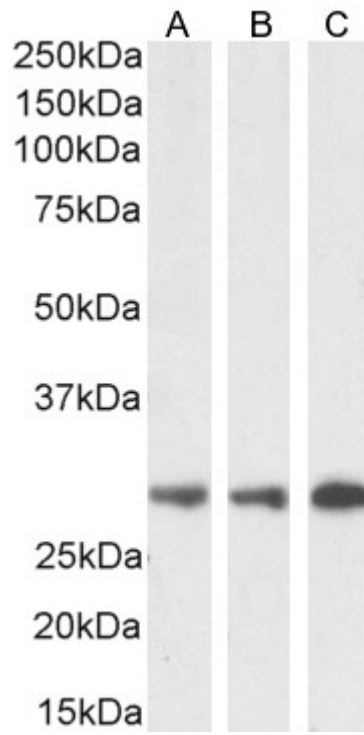
**Immunofluorescence:** Strong expression of the protein seen in the plasm membrane/ cytoplasm of A431 cells. Recommended concentration: 10µg/ml.

**Flow Cytometry:** Flow cytometric analysis of A431 cells. Recommended concentration: 10ug/ml.

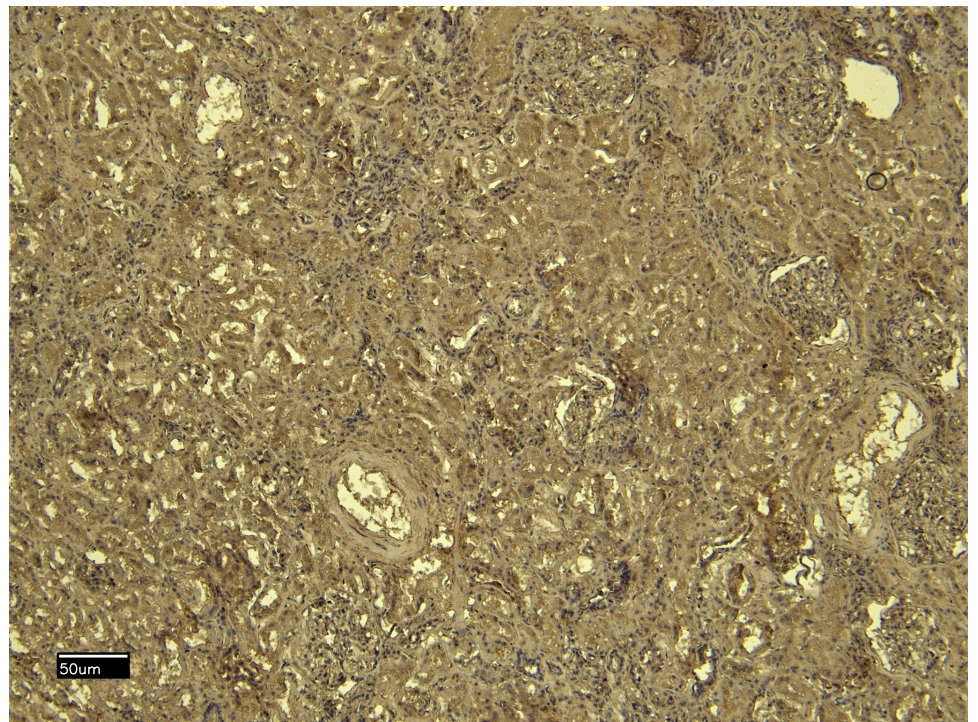
### Species Reactivity

**Tested:** Human

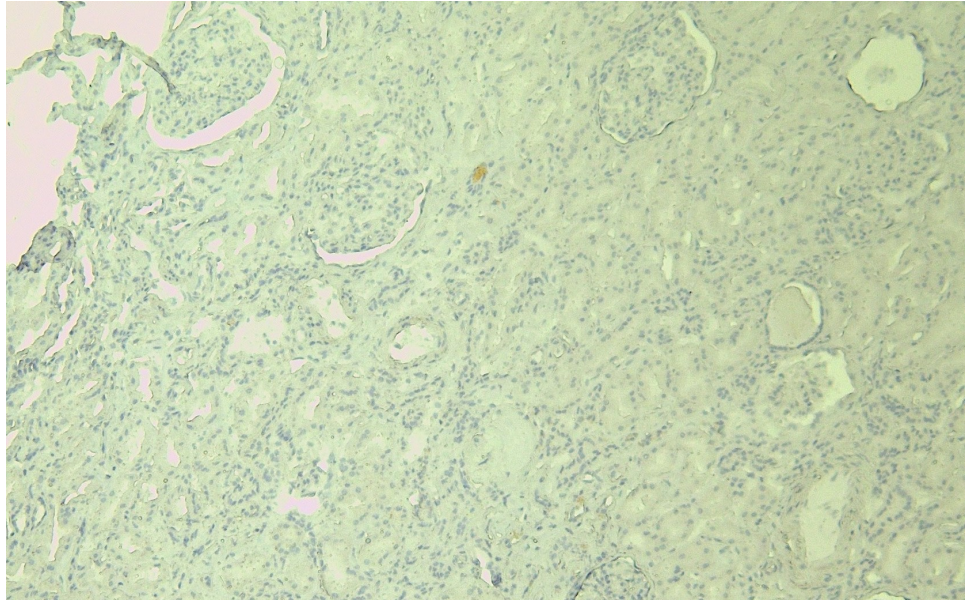
**Expected from sequence similarity:** Human



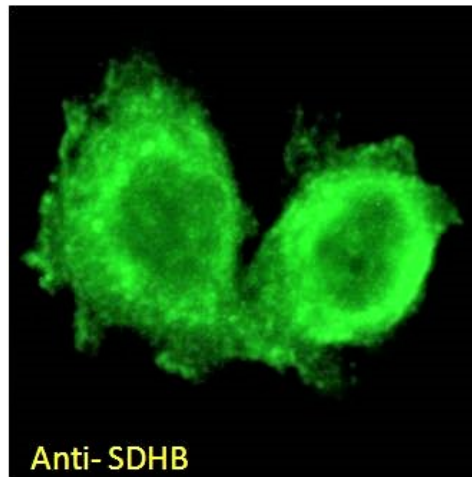
EB06868 (0.1 $\mu$ g/ml) staining of HEK293 (A), Jurkat (B) and HeLa (C) cell lysate (35 $\mu$ g protein in RIPA buffer).  
Detected by chemiluminescence.



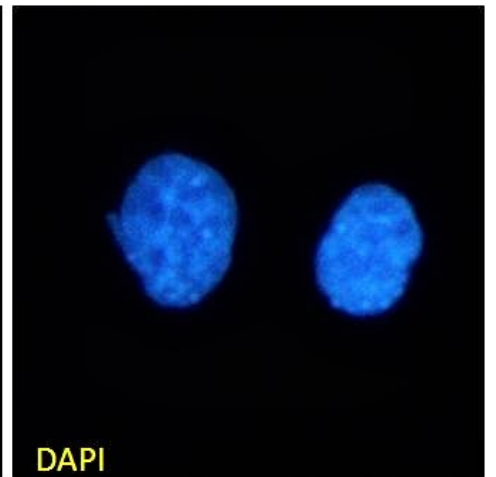
EB06868 (6 $\mu$ g/ml) staining of paraffin embedded Human Kidney. Heat induced antigen retrieval with citrate buffer pH 6, HRP-staining.



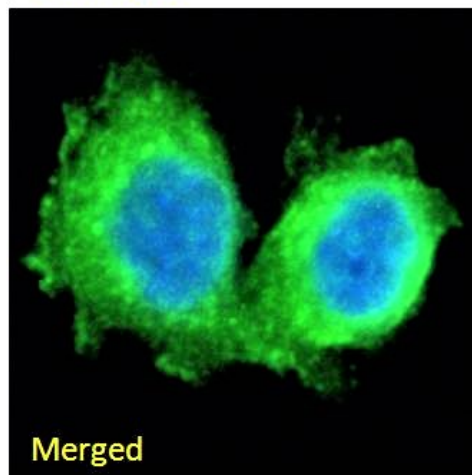
EB06868 Negative Control showing staining of paraffin embedded Human Kidney, with no primary antibody.



Anti- SDHB



DAPI

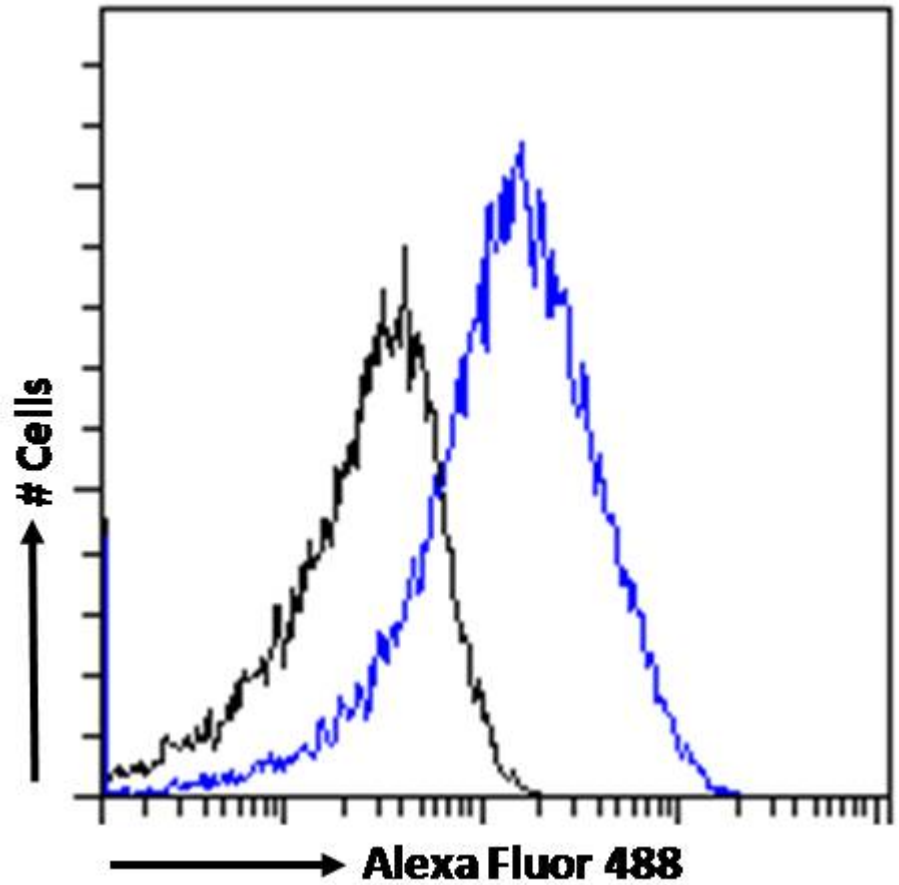


Merged



-ve control

EB06868 Immunofluorescence analysis of paraformaldehyde fixed A431 cells, permeabilized with 0.15% Triton. Primary incubation 1hr (10ug/ml) followed by Alexa Fluor 488 secondary antibody (2ug/ml), showing plasma membrane and cytoplasmic staining. The nuclear stain is DAPI (blue). Negative control: Unimmunized goat IgG (10ug/ml) followed by Alexa Fluor 488 secondary antibody (2ug/ml).



EB06868 Flow cytometric analysis of paraformaldehyde fixed A431 cells (blue line), permeabilized with 0.5% Triton. Primary incubation 1hr (10ug/ml) followed by Alexa Fluor 488 secondary antibody (1ug/ml). IgG control: Unimmunized goat IgG (black line) followed by Alexa Fluor 488 secondary antibody.