



International Office

Everest Biotech Ltd

Vector Laboratories, Inc.
6737 Mowry Ave
Newark, CA 94560
United States

Customer Service:

customerservice@vectorlabs.com

Technical Service:

technical@vectorlabs.com

Tel: +1 (800) 227-6666

www.everestbiotech.com

**Research Use Only. Not for
diagnostic or therapeutic use.**

EB12272 - Goat Anti-secretogranin II (aa203-217) Antibody

Size: 100µg specific antibody in 200µl



Target Protein

Principal Names: SCG2, secretogranin II, CHGC, EM66, SN, SgII, chromogranin-C, secretogranin-2, secretoneurin

Official Symbol: SCG2

Accession Number(s): NP_003460.2

Human GeneID(s): [7857](#)

Immunogen

Peptide with sequence C-QELGKLTGPNNQKRE, from the internal region of the protein sequence according to NP_003460.2.

Please note the [peptide](#) is available for sale.

Purification and Storage

Purified from goat serum by ammonium sulphate precipitation followed by antigen affinity chromatography using the immunizing peptide.

Supplied at 0.5 mg/ml in Tris saline, 0.02% sodium azide, pH7.3 with 0.5% bovine serum albumin.

Aliquot and store at -20°C. Minimize freezing and thawing.

Applications Tested

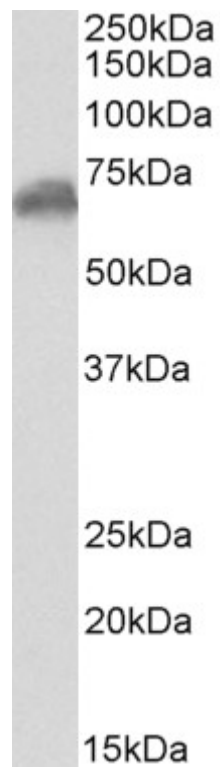
Peptide ELISA: antibody detection limit dilution 1:128000.

Western blot: Approx 70kDa band observed in Human Brain (Cerebellum) lysates (calculated MW of 70.9kDa according to NP_003460.2). Recommended concentration: 0.3-1µg/ml.

Species Reactivity

Tested: Human

Expected from sequence similarity: Human, Dog, Pig



EB12272 (0.3 μ g/ml) staining of Human Cerebellum lysate (35 μ g protein in RIPA buffer). Primary incubation was 1 hour. Detected by chemiluminescence.