



International Office

Everest Biotech Ltd

Vector Laboratories, Inc.
6737 Mowry Ave
Newark, CA 94560
United States

Customer Service:

customerservice@vectorlabs.com

Technical Service:

technical@vectorlabs.com

Tel: +1 (800) 227-6666

www.everestbiotech.com

**Research Use Only. Not for
diagnostic or therapeutic use.**

EB08567 - Goat Anti-SEL1L Antibody

Size: 100µg specific antibody in 200µl



Target Protein

Principal Names: SEL1L, sel-1 suppressor of lin-12-like (C. elegans), IBD2, PRO1063, SEL1-LIKE, Suppressor of lin 12 (sel-1), C. elegans, homolog of, sel-1 (suppressor of lin-12, C.elegans)-like, sel-1 suppressor of lin-12-like

Official Symbol: SEL1L

Accession Number(s): NP_005056.3

Human GeneID(s): [6400](#)

Non-Human GeneID(s): 20338 (mouse), 314352 (rat)

Immunogen

Peptide with sequence C-TAYNSYKGDYDYN, from the internal region of the protein sequence according to NP_005056.3.

Please note the [peptide](#) is available for sale.

Purification and Storage

Purified from goat serum by ammonium sulphate precipitation followed by antigen affinity chromatography using the immunizing peptide.

Supplied at 0.5 mg/ml in Tris saline, 0.02% sodium azide, pH7.3 with 0.5% bovine serum albumin.

Aliquot and store at -20°C. Minimize freezing and thawing.

Applications Tested

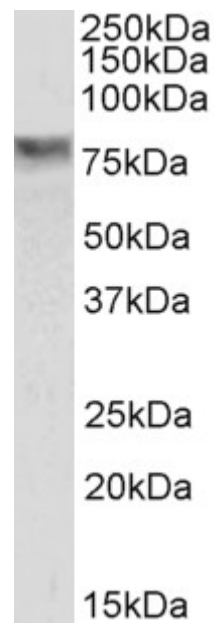
Peptide ELISA: antibody detection limit dilution 1:1000.

Western blot: Approx 80kDa band observed in lysates of cell line HepG2 (calculated MW of 88.8kDa according to NP_005056.3). Recommended concentration: 1-3µg/ml.

Species Reactivity

Tested: Human

Expected from sequence similarity: Human, Dog, Cow



EB08567 (0.3ug/ml) staining of HepG2 cell lysate (35µg protein in RIPA buffer). Primary incubation was 1 hour.
Detected by chemiluminescence.