

## UK Office

### Everest Biotech Ltd

Cherwell Innovation Centre  
77 Heyford Park  
Upper Heyford  
Oxfordshire  
OX25 5HD  
UK

Enquiries:

[info@everestbiotech.com](mailto:info@everestbiotech.com)

Sales:

[sales@everestbiotech.com](mailto:sales@everestbiotech.com)

Tech support:

[support@everestbiotech.com](mailto:support@everestbiotech.com)

Tel: +44 (0)1869 238326

[www.everestbiotech.com](http://www.everestbiotech.com)

**Research Use Only. Not for  
diagnostic or therapeutic use.**

## EB07541 - Goat Anti-Semaphorin 3E (internal) Antibody

Size: 100µg specific antibody in 200µl



### Target Protein

**Principal Names:** SEMA3E, sema domain, immunoglobulin domain (Ig), short basic domain, secreted, (semaphorin) 3E, KIAA0331, M-SEMAH, M-SemaK, M-sema H, SEMAH, coll-5, sema domain, immunoglobulin domain (Ig), short basic domain, secreted, 3E, semaphorin 3E

**Official Symbol:** SEMA3E

**Accession Number(s):** NP\_036563.1; NP\_001171600.1

**Human GeneID(s):** [9723](#)

**Non-Human GeneID(s):** 20349 (mouse)

**Important Comments:** This antibody is expected to recognise both reported isoforms (NP\_036563.1; NP\_001171600.1).

### Immunogen

Peptide with sequence C-NGGRYGTTKDYPDD, from the internal region of the protein sequence according to NP\_036563.1; NP\_001171600.1.

Please note the [peptide](#) is available for sale.

### Purification and Storage

Purified from goat serum by ammonium sulphate precipitation followed by antigen affinity chromatography using the immunizing peptide.

Supplied at 0.5 mg/ml in Tris saline, 0.02% sodium azide, pH7.3 with 0.5% bovine serum albumin.

Aliquot and store at -20°C. Minimize freezing and thawing.

### Applications Tested

**Peptide ELISA:** antibody detection limit dilution 1:128000.

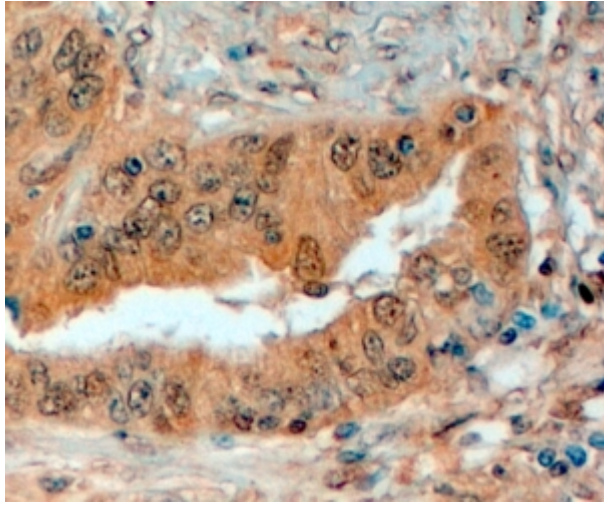
**Western blot:** Preliminary experiments gave an approx 35kDa band in Human Prostate lysates after 0.03µg/ml antibody staining. Please note that currently we cannot find an explanation in the literature for the band we observe given the calculated size of 89.2kDa according to NP\_036563.1. The 35kDa band was successfully blocked by incubation with the immunizing peptide.

**IHC:** In paraffin embedded Human Prostate shows membranous staining of secretory cells in the gland. Recommended concentration, 4-6µg/ml.

### Species Reactivity

**Tested:** Human

**Expected from sequence similarity:** Human, Mouse, Rat, Dog, Pig



EB07541 (4 $\mu$ g/ml) staining of paraffin embedded Human Prostate. Steamed antigen retrieval with citrate buffer pH 6, HRP-staining.