

UK Office

Everest Biotech Ltd

Cherwell Innovation Centre
77 Heyford Park
Upper Heyford
Oxfordshire
OX25 5HD
UK

Enquiries:

info@everestbiotech.com

Sales:

sales@everestbiotech.com

Tech support:

support@everestbiotech.com

Tel: +44 (0)1869 238326

www.everestbiotech.com

**Research Use Only. Not for
diagnostic or therapeutic use.**

EB07352 - Goat Anti-Semaphorin 5A Antibody

Size: 100µg specific antibody in 200µl



Target Protein

Principal Names: SEMA5A, sema domain, seven thrombospondin repeats (type 1 and type 1-like), transmembrane domain (TM) and short cytoplasmic domain, (semaphorin) 5A, HGNC:10736, SEMAF, semF, sema domain, seven thrombospondin repeats (type 1 and type 1-like), transmembrane

Official Symbol: SEMA5A

Accession Number(s): NP_003957.1

Human GeneID(s): [9037](#)

Non-Human GeneID(s): 20356 (mouse), 310207 (rat)

Important Comments: The immunizing peptide corresponds to a part of the extracellular domain.

Immunogen

Peptide with sequence DEATKKACYSKGKS, from the internal region of the protein sequence according to NP_003957.1.

Please note the [peptide](#) is available for sale.

Purification and Storage

Purified from goat serum by ammonium sulphate precipitation followed by antigen affinity chromatography using the immunizing peptide.

Supplied at 0.5 mg/ml in Tris saline, 0.02% sodium azide, pH7.3 with 0.5% bovine serum albumin.

Aliquot and store at -20°C. Minimize freezing and thawing.

Applications Tested

Peptide ELISA: antibody detection limit dilution 1:128000.

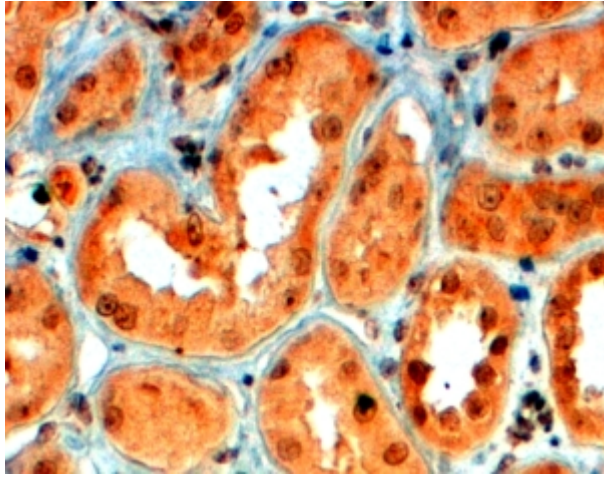
Western blot: Preliminary experiments gave an approx 90kDa in Mouse Brain lysates and approx 25kDa band in Human Brain (Cerebellum), Colon, Heart and Kidney lysates after 0.03µg/ml antibody staining. Please note that currently we cannot find an explanation in the literature for the bands we observe given the calculated size of 121kDa according to NP_003957.1. The 90kDa and 25kDa band were successfully blocked by incubation with the immunizing peptide.

IHC: In paraffin embedded Human Kidney shows membranous and vesicular staining in PCT cells. Recommended concentration: 4-6µg/ml.

Species Reactivity

Tested: Human

Expected from sequence similarity: Human, Mouse, Rat, Dog, Cow



EB07352 (4 μ g/ml) staining of paraffin embedded Human Kidney. Steamed antigen retrieval with citrate buffer pH 6, HRP-staining.