

International Office

Everest Biotech Ltd

Vector Laboratories, Inc.
6737 Mowry Ave
Newark, CA 94560
United States

Customer Service:

customerservice@vectorlabs.com

Technical Service:

technical@vectorlabs.com

Tel: +1 (800) 227-6666

www.everestbiotech.com

**Research Use Only. Not for
diagnostic or therapeutic use.**

EB08330 - Goat Anti-SEN6 / SUSP1 Antibody

Size: 100µg specific antibody in 200µl



Target Protein

Principal Names: SENP6, SUSP1, SUMO1/sentrin specific peptidase 6, RP1-134M13.1, FLJ11355, FLJ11887, KIAA0389, KIAA0797, SSP1, 2810017C20Rik, SUMO-1-specific protease, SUMO1/sentrin specific protease 6

Official Symbol: SENP6

Accession Number(s): NP_001093879.1; NP_056386.2

Human GeneID(s): [26054](#)

Non-Human GeneID(s): 215351 (mouse), 300860 (rat)

Important Comments: This antibody is expected to recognise both reported isoforms (NP_001093879.1; NP_056386.2).

Immunogen

Peptide with sequence C-KPKYEPNPHYHEN, from the internal region of the protein sequence according to NP_001093879.1; NP_056386.2.

Please note the [peptide](#) is available for sale.

Purification and Storage

Purified from goat serum by ammonium sulphate precipitation followed by antigen affinity chromatography using the immunizing peptide.

Supplied at 0.5 mg/ml in Tris saline, 0.02% sodium azide, pH7.3 with 0.5% bovine serum albumin.

Aliquot and store at -20°C. Minimize freezing and thawing.

Applications Tested

Peptide ELISA: antibody detection limit dilution 1:32000.

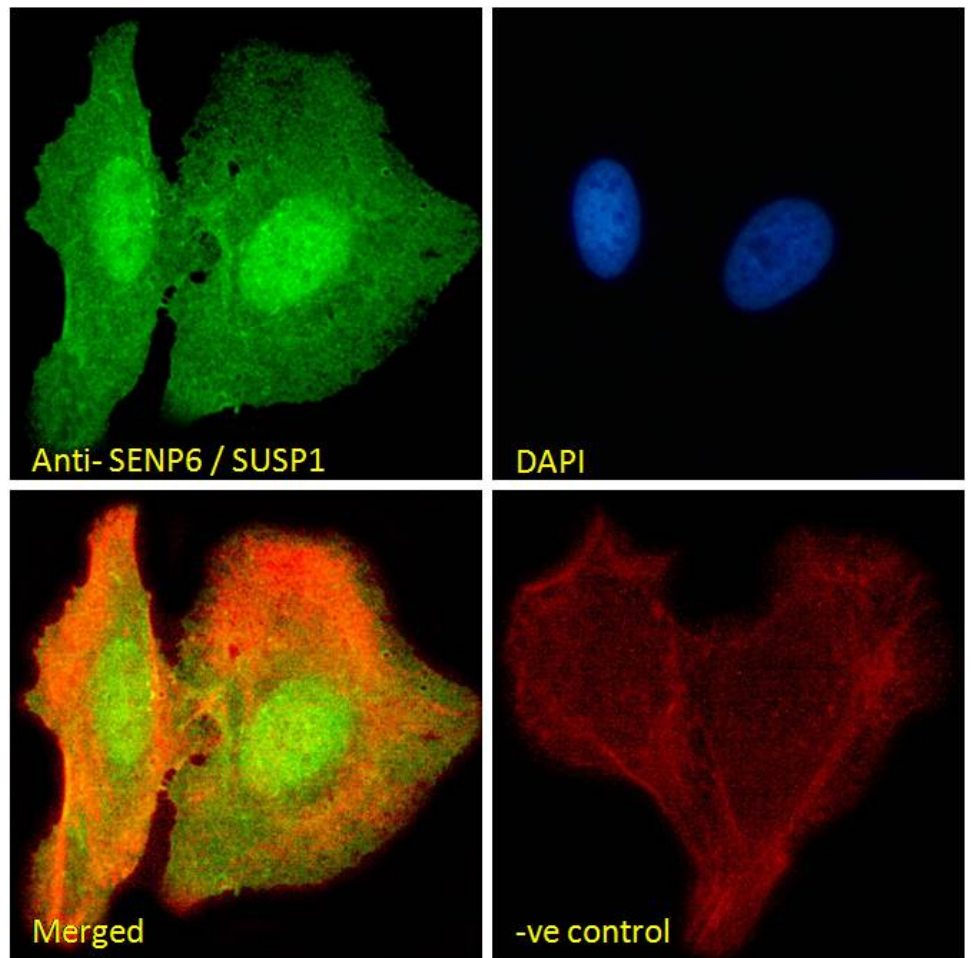
Immunofluorescence: Strong expression of the protein seen in the nuclei and cytoplasm of U2OS cells. Recommended concentration: 10µg/ml.

Flow Cytometry: Flow cytometric analysis of U2OS cells. Recommended concentration: 10ug/ml.

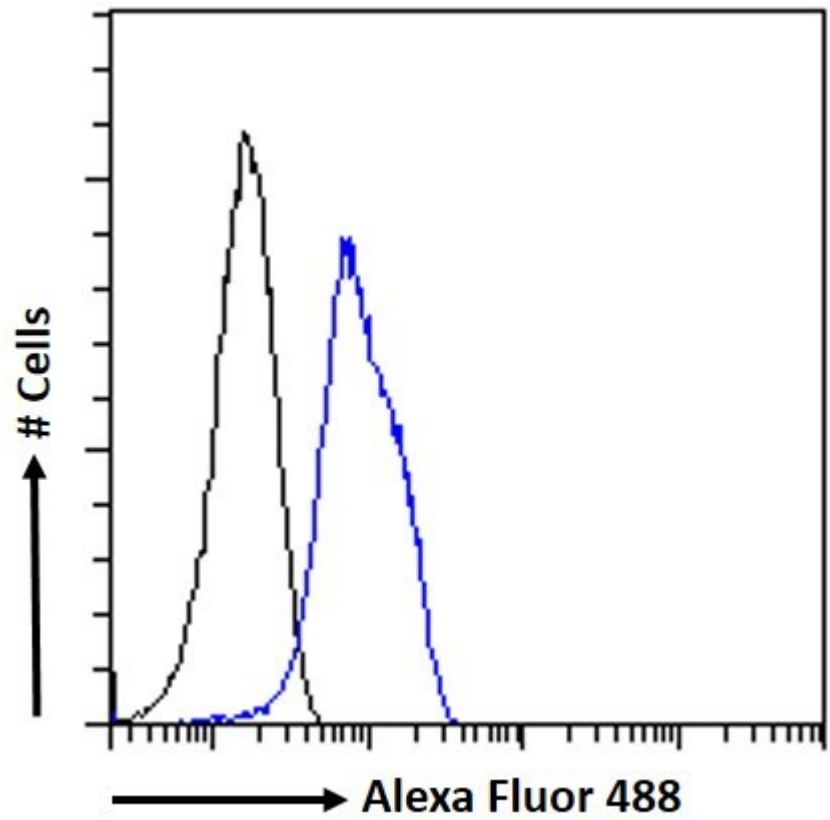
Species Reactivity

Tested: Human

Expected from sequence similarity: Human, Mouse, Rat, Cow



EB08330 Immunofluorescence analysis of paraformaldehyde fixed U2OS cells, permeabilized with 0.15% Triton. Primary incubation 1hr (10ug/ml) followed by Alexa Fluor 488 secondary antibody (2ug/ml), showing nuclear and cytoplasmic staining. Actin filaments were stained with phalloidin (red) and the nuclear stain is DAPI (blue). Negative control: Unimmunized goat IgG (10ug/ml) followed by Alexa Fluor 488 secondary antibody (2ug/ml).



EB08330 Flow cytometric analysis of paraformaldehyde fixed U2OS cells (blue line), permeabilized with 0.5% Triton. Primary incubation 1hr (10ug/ml) followed by Alexa Fluor 488 secondary antibody (1ug/ml). IgG control: Unimmunized goat IgG (black line) followed by Alexa Fluor 488 secondary antibody.