



UK Office

Everest Biotech Ltd

Cherwell Innovation Centre
77 Heyford Park
Upper Heyford
Oxfordshire
OX25 5HD
UK

Enquiries:

info@everestbiotech.com

Sales:

sales@everestbiotech.com

Tech support:

support@everestbiotech.com

Tel: +44 (0)1869 238326

www.everestbiotech.com

**Research Use Only. Not for
diagnostic or therapeutic use.**

EB08931 - Goat Anti-SEPT2 Antibody

Size: 100µg specific antibody in 200µl



Target Protein

Principal Names: SEPT2, septin 2, DIFF6, KIAA0158, NEDD5, Pnutl3, hNedd5, neural precursor cell expressed, developmentally down-regulated 5

Official Symbol: SEPTIN2

Accession Number(s): NP_001008491.1; NP_001269901.1; NP_001269902.1; NP_001307958.1; NP_001336231.1

Human GeneID(s): [4735](#)

Non-Human GeneID(s): 18000 (mouse), 117515 (rat)

Important Comments: This antibody is expected to recognise::NP_001008491.1 (iso a); NP_001269901.1 (iso b); NP_001269902.1 (iso c); NP_001307958.1; (iso d) NP_001336231.1 (iso f).

Immunogen

Peptide with sequence SKQQPTQFINPET-C, from the N terminus of the protein sequence according to NP_001008491.1; NP_001269901.1; NP_001269902.1; NP_001307958.1; NP_001336231.1.

Please note the [peptide](#) is available for sale.

Purification and Storage

Purified from goat serum by ammonium sulphate precipitation followed by antigen affinity chromatography using the immunizing peptide.

Supplied at 0.5 mg/ml in Tris saline, 0.02% sodium azide, pH7.3 with 0.5% bovine serum albumin.

Aliquot and store at -20°C. Minimize freezing and thawing.

Applications Tested

Peptide ELISA: antibody detection limit dilution 1:32000.

Western blot: Approx. 40kDa band observed in lysates of cell lines HepG2, Jurkat, HeLa and KNRK, and in Rat Testis lysates, and approx. 42kDa in lysates of cell lines K562 and NIH3T3, and in Human and Mouse Testis lysates (calculated MW of 41.5kDa according to Human NP_001008491.1, Mouse NP_001153189.1 and Rat NP_476489.1).

Recommended concentration: 1-2µg/ml. Primary incubation 1 hour at room temperature.

IHC: Paraffin embedded Human Breast, Tonsil and Brain (Cortex). Recommended concentration: 2.5µg/ml.

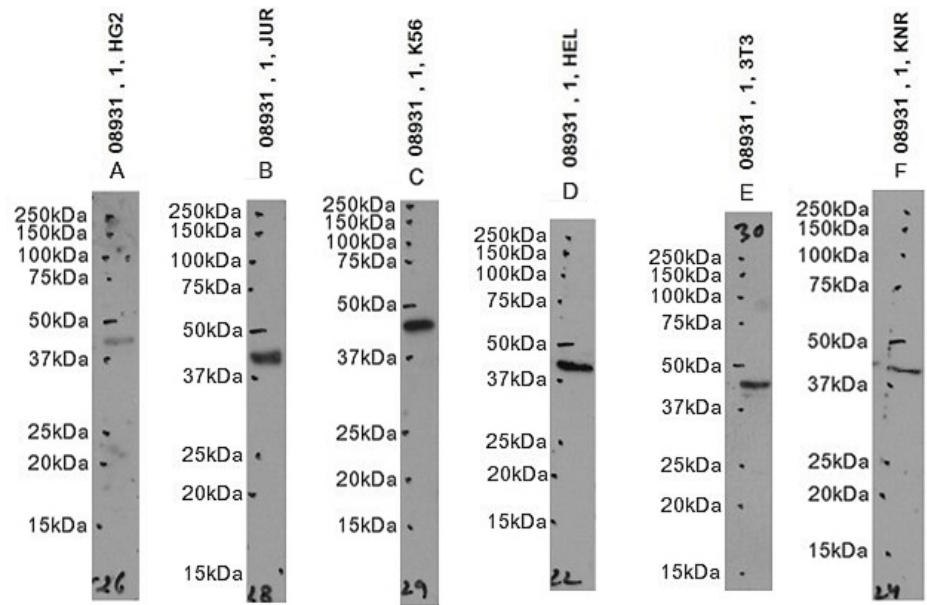
Immunofluorescence: Strong expression of the protein seen in HeLa and U2OS cells. Recommended concentration: 10µg/ml.

Flow Cytometry: Flow cytometric analysis of HeLa cells. Recommended concentration: 10ug/ml.

Species Reactivity

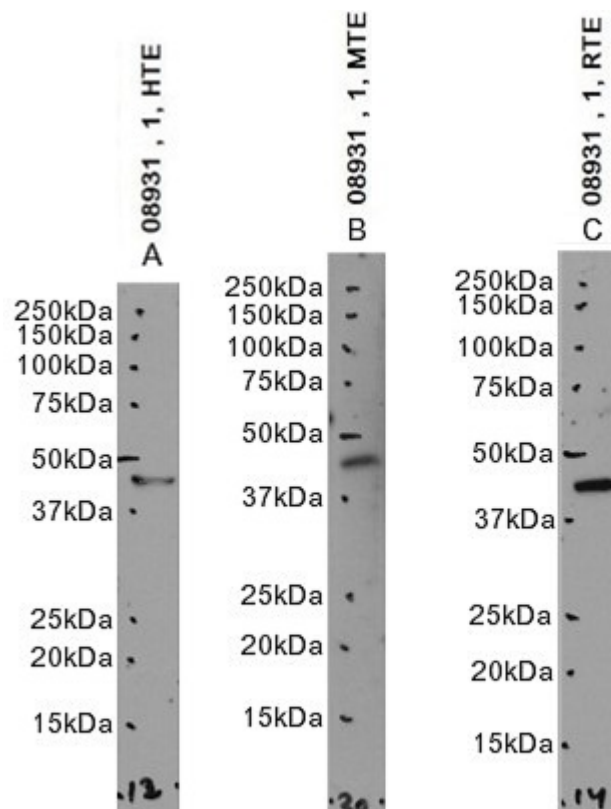
Tested: Human, Mouse, Rat

Expected from sequence similarity: Human, Mouse, Rat



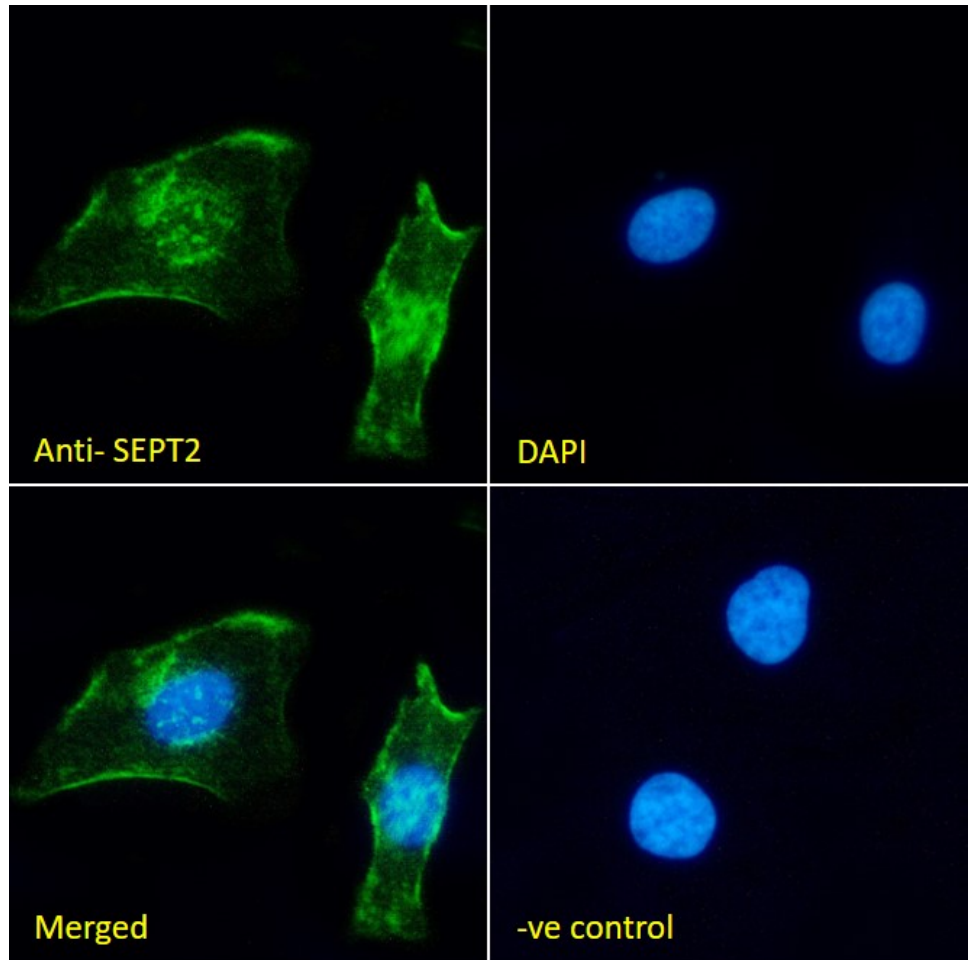
EB08931 optimised QC. Primary incubation 1 hour at room temperature.

Images A, B, C, D, E and F: HepG2, Jurkat, K562, HEL, NIH3T3 and KNRK cell lysate at primary Ab concentration 1ug/ml. (Loaded 35µg protein in RIPA buffer, per lane). Detected by chemiluminescence.

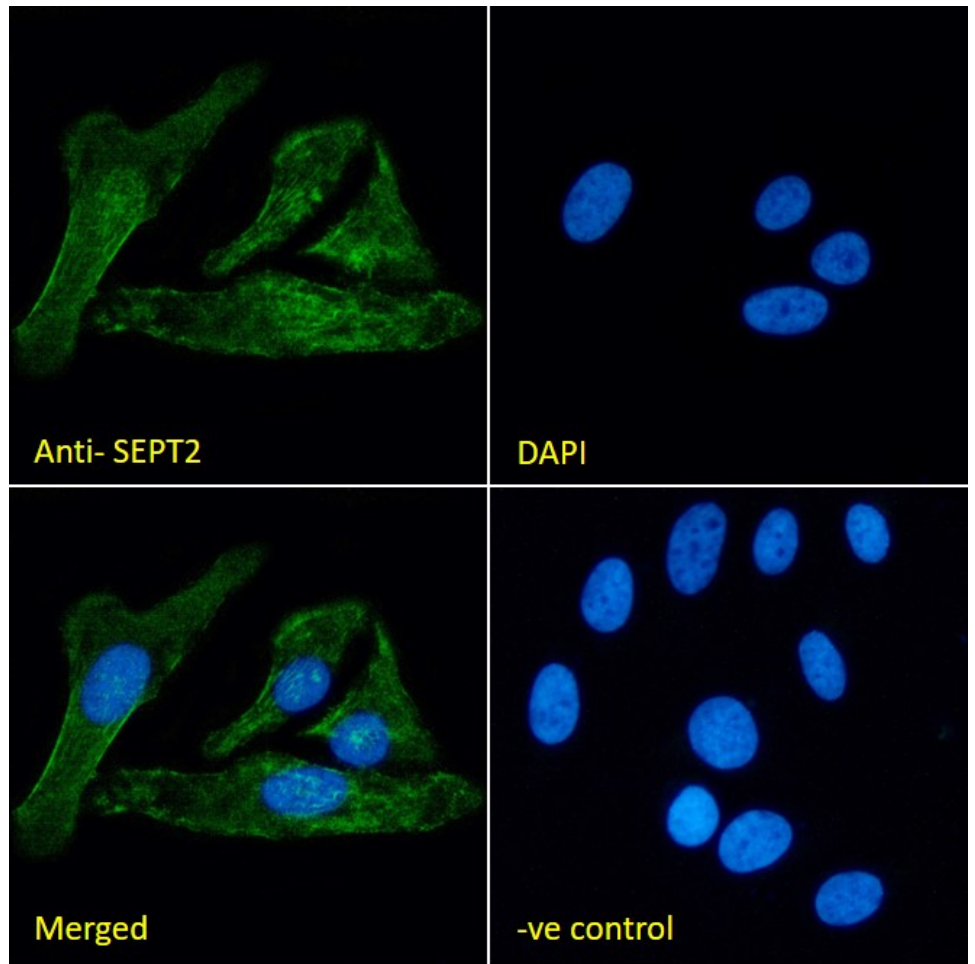


EB08931 optimised QC. Primary incubation 1 hour at room temperature.

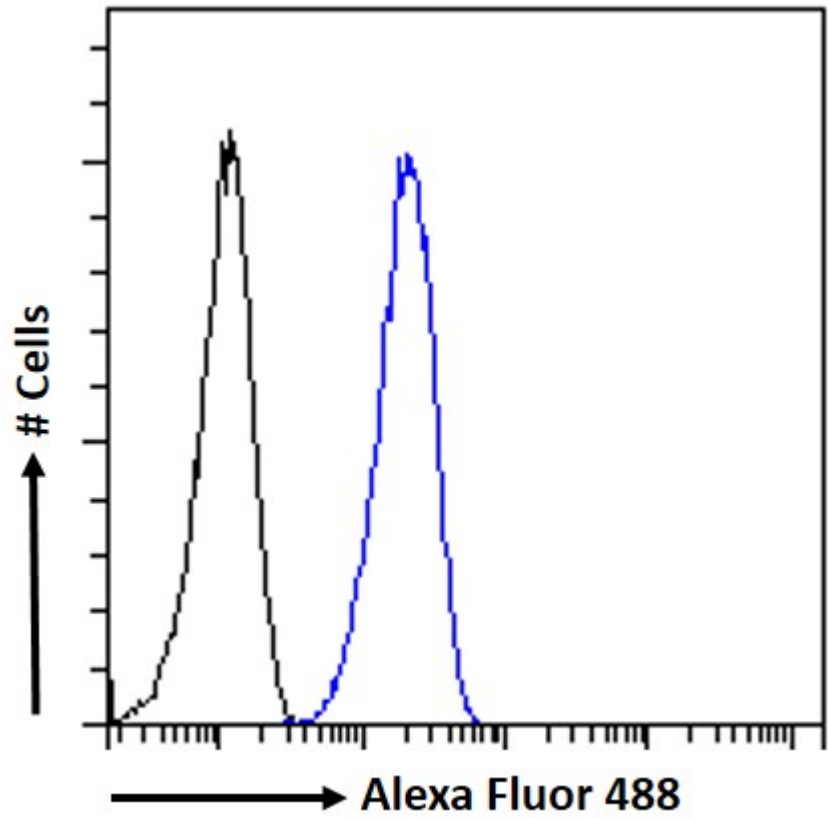
Images A, B, and C: Human, Mouse, Rat Testes lysate at primary Ab concentration 1ug/ml. (Loaded 35µg protein in RIPA buffer, per lane). Detected by chemiluminescence.



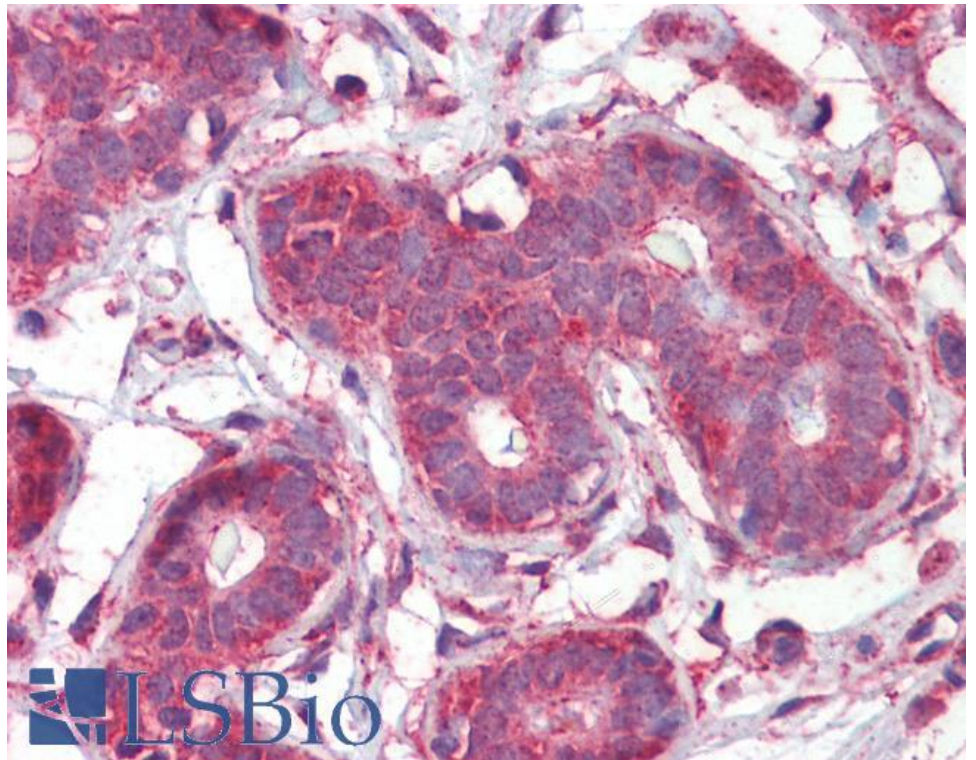
EB08931 Immunofluorescence analysis of paraformaldehyde fixed HeLa cells, permeabilized with 0.15% Triton. Primary incubation 1hr (10ug/ml) followed by Alexa Fluor 488 secondary antibody (2ug/ml), showing membrane and nuclear staining. The nuclear stain is DAPI (blue). Negative control: Unimmunized goat IgG (10ug/ml) followed by Alexa Fluor 488 secondary antibody (2ug/ml).



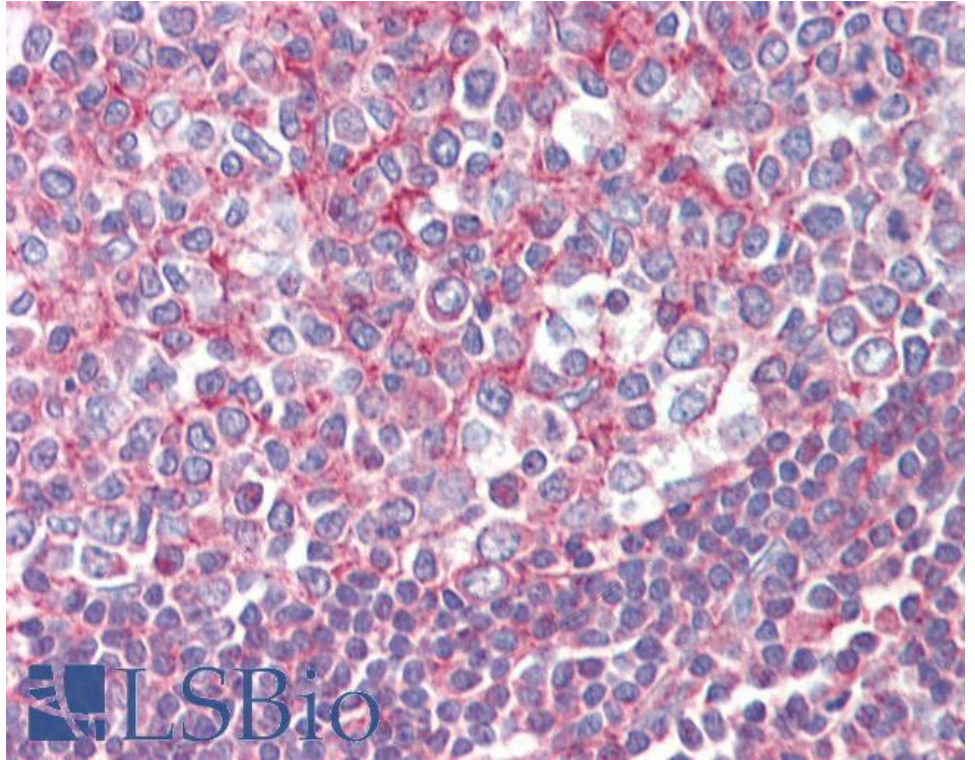
EB08931 Immunofluorescence analysis of paraformaldehyde fixed U2OS cells, permeabilized with 0.15% Triton. Primary incubation 1hr (10ug/ml) followed by Alexa Fluor 488 secondary antibody (2ug/ml), showing membrane, nuclear and filament staining. The nuclear stain is DAPI (blue). Negative control: Unimmunized goat IgG (10ug/ml) followed by Alexa Fluor 488 secondary antibody (2ug/ml).



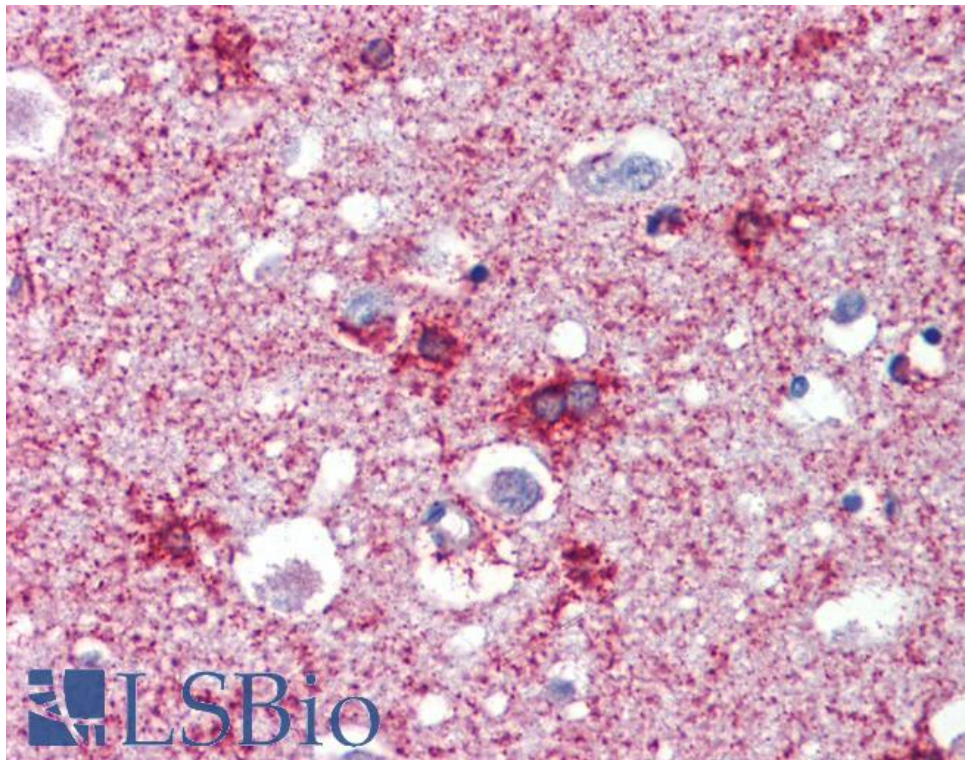
EB08931 Flow cytometric analysis of paraformaldehyde fixed HeLa cells (blue line), permeabilized with 0.5% Triton. Primary incubation 1hr (10ug/ml) followed by Alexa Fluor 488 secondary antibody (1ug/ml). IgG control: Unimmunized goat IgG (black line) followed by Alexa Fluor 488 secondary antibody.



EB08931 (2.5 μ g/ml) staining of paraffin embedded Human Breast. Steamed antigen retrieval with citrate buffer pH 6, AP-staining.



EB08931 (2.5µg/ml) staining of paraffin embedded Human Tonsil. Steamed antigen retrieval with citrate buffer pH 6, AP-staining.



EB08931 (2.5µg/ml) staining of paraffin embedded Human Cortex. Steamed antigen retrieval with citrate buffer pH 6, AP-staining.