



## UK Office

### Everest Biotech Ltd

Cherwell Innovation Centre  
77 Heyford Park  
Upper Heyford  
Oxfordshire  
OX25 5HD  
UK

Enquiries:

[info@everestbiotech.com](mailto:info@everestbiotech.com)

Sales:

[sales@everestbiotech.com](mailto:sales@everestbiotech.com)

Tech support:

[support@everestbiotech.com](mailto:support@everestbiotech.com)

Tel: +44 (0)1869 238326

Fax: +44 (0)1869 238327

## US Office

### Everest Biotech c/o Abcore

405 Maple Street, Suite A106  
Ramona,  
CA 92065  
USA

Inquiries:

[info@everestbiotech.com](mailto:info@everestbiotech.com)

Sales:

[usasales@everestbiotech.com](mailto:usasales@everestbiotech.com)

Tech support:

[support@everestbiotech.com](mailto:support@everestbiotech.com)

Tel: 888-320-4628 (toll-free)

Fax: 888-841-9041

[www.everestbiotech.com](http://www.everestbiotech.com)

**Research Use Only. Not for  
diagnostic or therapeutic use.**

## EB10427 - Goat Anti-SEPT4 (aa425-435) Antibody

Size: 100µg specific antibody in 200µl



### Target Protein

**Principal Names:** ARTS, BRADEION, CE5B3, cell division control-related protein 2, cerebral protein 7, H5, hCDCREL-2, hucep-7, MART, peanut-like 2, PNUTL2, SEP4, septin 4

**Official Symbol:** SEPT4

**Accession Number(s):** NP\_004565.1; NP\_536341.1, NP\_001185642.1

**Human GeneID(s):** [5414](#)

**Non-Human GeneID(s):** 18952 (mouse)

**Important Comments:** This antibody is expected to recognize isoform 1 (NP\_004565.1), 3 (NP\_536341.1) and 4 (NP\_001185642.1). Amino acid numbering in name refers to NP\_004565.1 sequence.

### Immunogen

Peptide with sequence C-RNKLTRESGTD, from the internal region of the protein sequence according to NP\_004565.1; NP\_536341.1, NP\_001185642.1.

Please note the [peptide](#) is available for sale.

### Purification and Storage

Purified from goat serum by ammonium sulphate precipitation followed by antigen affinity chromatography using the immunizing peptide.

Supplied at 0.5 mg/ml in Tris saline, 0.02% sodium azide, pH7.3 with 0.5% bovine serum albumin.

Aliquot and store at -20°C. Minimize freezing and thawing.

### Applications Tested

**Peptide ELISA:** antibody detection limit dilution 1:64000.

**Western blot:** Approx 50kDa band observed in Human Heart lysates and in preliminary testing of Mouse Brain lysate (calculated MW of 53.0kDa according to NP\_536341.1).

Recommended concentration: 1-3µg/ml. Primary incubation 1 hour at room temperature.

**IHC:** Paraffin embedded Human Brain (Cerebellum). Recommended concentration: 3.75µg/ml.

**Flow Cytometry:** Flow cytometric analysis of Jurkat cells. Recommended concentration: 10ug/ml.

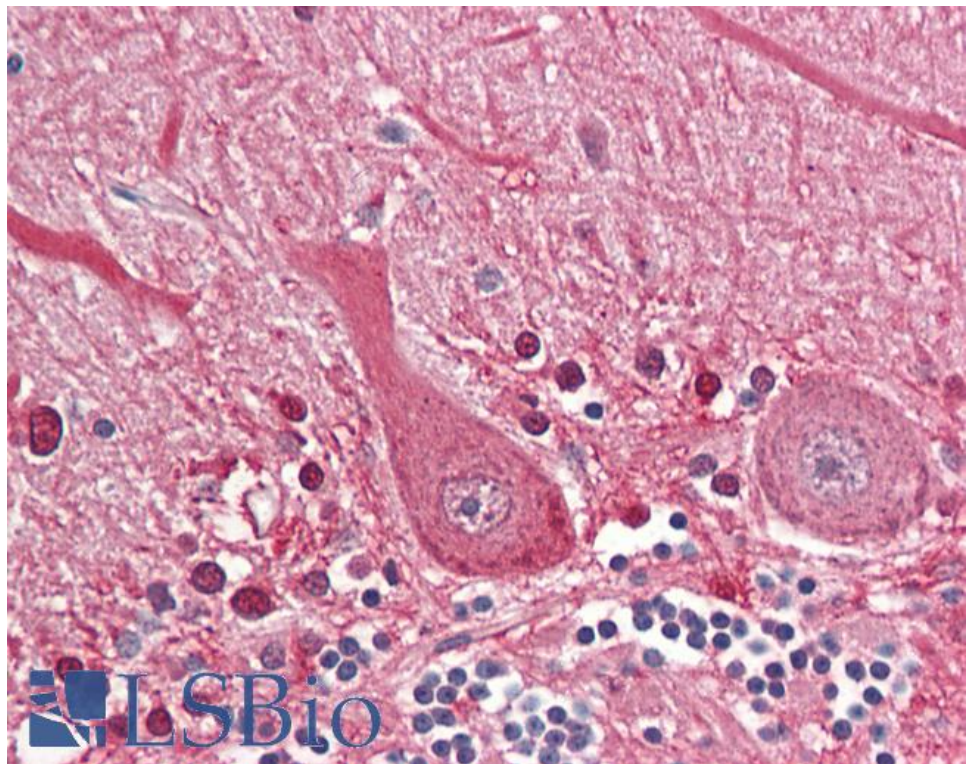
### Species Reactivity

**Tested:** Human

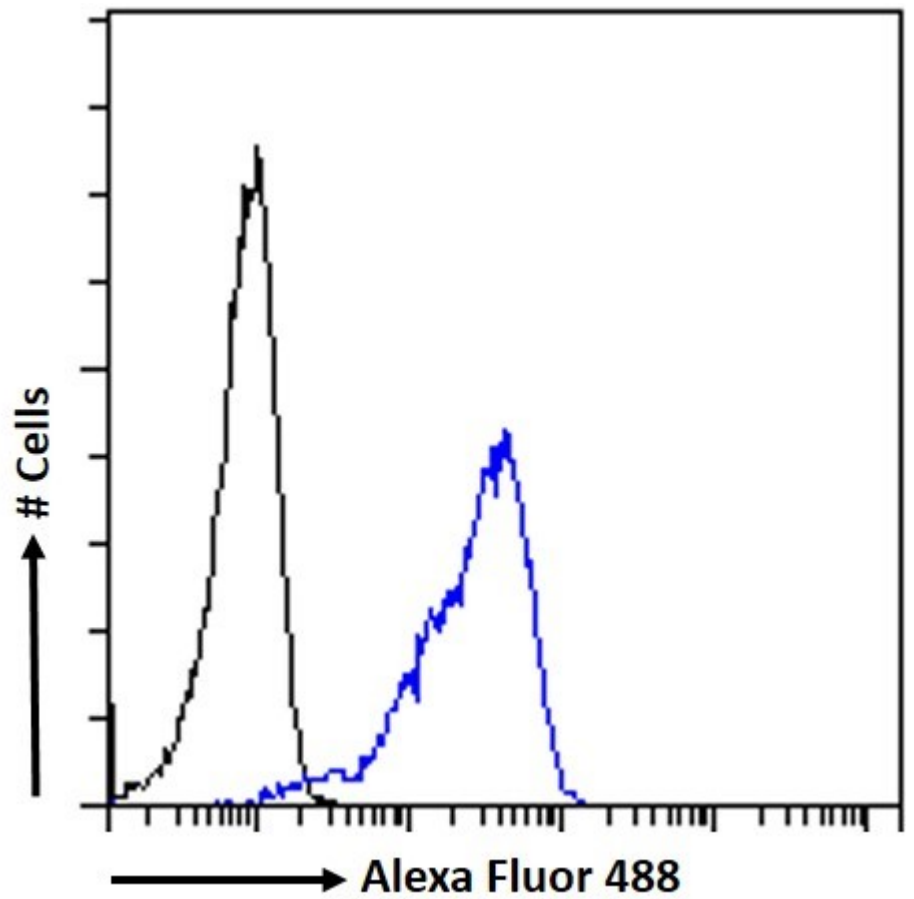
**Expected from sequence similarity:** Human



EB10427 (1 $\mu$ g/ml) staining of Human Heart lysate (35 $\mu$ g protein in RIPA buffer). Detected by chemiluminescence.



EB10427 (3.75 $\mu$ g/ml) staining of paraffin embedded Human Cerebellum. Steamed antigen retrieval with citrate buffer pH 6, AP-staining.



EB10427 Flow cytometric analysis of paraformaldehyde fixed Jurkat cells (blue line), permeabilized with 0.5% Triton. Primary incubation 1hr (10ug/ml) followed by Alexa Fluor 488 secondary antibody (1ug/ml). IgG control: Unimmunized goat IgG (black line) followed by Alexa Fluor 488 secondary antibody.