



UK Office

Everest Biotech Ltd

Cherwell Innovation Centre
77 Heyford Park
Upper Heyford
Oxfordshire
OX25 5HD
UK

Enquiries:

info@everestbiotech.com

Sales:

sales@everestbiotech.com

Tech support:

support@everestbiotech.com

Tel: +44 (0)1869 238326

Fax: +44 (0)1869 238327

US Office

Everest Biotech c/o Abcore

405 Maple Street, Suite A106
Ramona,
CA 92065
USA

Inquiries:

info@everestbiotech.com

Sales:

usasales@everestbiotech.com

Tech support:

support@everestbiotech.com

Tel: 888-320-4628 (toll-free)

Fax: 888-841-9041

www.everestbiotech.com

**Research Use Only. Not for
diagnostic or therapeutic use.**

EB08932 - Goat Anti-SEPT6 Antibody

Size: 100µg specific antibody in 200µl



Target Protein

Principal Names: SEPT6, septin 6, KIAA0128, MGC16619, MGC20339, SEP2, SEPT2, septin 2

Official Symbol: SEPTIN6

Accession Number(s): NP_665798.1; NP_055944.2; NP_665801.1

Human GeneID(s): [23157](#)

Important Comments: This antibody is expected to recognize the reported isoforms NP_665798.1, NP_055944.2 and NP_665801.1. Reported variants NP_665799.1 and NP_665798.1 represent identical protein.

Immunogen

Peptide with sequence C-DEVNAFKQRKTA, from the internal region of the protein sequence according to NP_665798.1; NP_055944.2; NP_665801.1.

Please note the [peptide](#) is available for sale.

Purification and Storage

Purified from goat serum by ammonium sulphate precipitation followed by antigen affinity chromatography using the immunizing peptide.

Supplied at 0.5 mg/ml in Tris saline, 0.02% sodium azide, pH7.3 with 0.5% bovine serum albumin.

Aliquot and store at -20°C. Minimize freezing and thawing.

Applications Tested

Peptide ELISA: antibody detection limit dilution 1:4000.

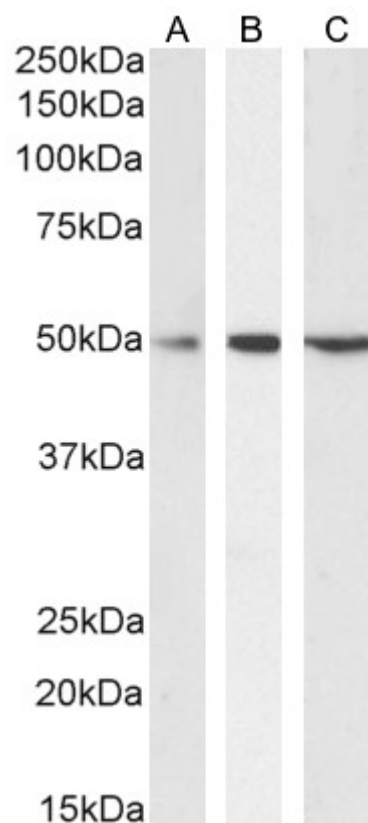
Western blot: Approx 50kDa band observed in Human Testis, Duodenum, Kidney and Tonsil lysates, and in lysates of cell lines Daudi, Jurkat and MOLT4 (calculated MW of 49.7kDa according to NP_055944.2). Recommended concentration: 0.1-1µg/ml. Primary incubation 1 hour at room temperature.

IHC: In paraffin embedded Human Tonsil shows specific staining in dividing cells just outside a germinal centre. Recommended concentration, 3-5µg/ml.

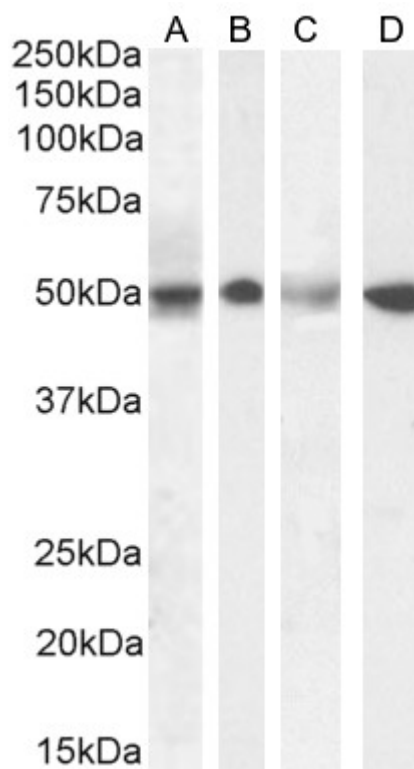
Species Reactivity

Tested: Human

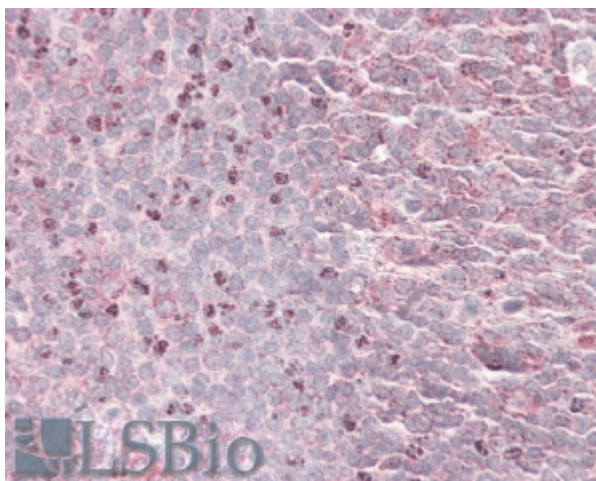
Expected from sequence similarity: Human, Cow, Dog



EB08932 (0.1µg/ml) staining of Daudi (A), Jurkat (B) and MOLT4 (C) cell lysate (35µg protein in RIPA buffer). Detected by chemiluminescence.



EB08932 (1µg/ml) staining of Human Testis (A), (0.1ug/ml) Duodenum (B), (0.5ug/ml) Kidney (C) and (0.3ug/ml) Tonsil (D) lysate (35µg protein in RIPA buffer). Detected by chemiluminescence.



EB08932 (3.8µg/ml) staining of paraffin embedded Human Tonsil. Steamed antigen retrieval with citrate buffer pH 6, AP-staining.