



International Office

Everest Biotech Ltd

Vector Laboratories, Inc.
6737 Mowry Ave
Newark, CA 94560
United States

Customer Service:

customerservice@vectorlabs.com

Technical Service:

technical@vectorlabs.com

Tel: +1 (800) 227-6666

www.everestbiotech.com

**Research Use Only. Not for
diagnostic or therapeutic use.**

EB07412 - Goat Anti-Septin 1 / SEPT1 Antibody

Size: 100µg specific antibody in 200µl



Target Protein

Principal Names: SEPT1, septin 1, DIFF6, LARP, MGC20394, PNUTL3, SEP1, differentiation 6 (deoxyguanosine triphosphate triphosphohydrolase), serologically defined breast cancer antigen NY-BR-24

Official Symbol: SEPT1

Accession Number(s): NP_443070.6

Human GeneID(s): [1731](#)

Non-Human GeneID(s): 54204 (mouse), 293507 (rat)

Immunogen

Peptide with sequence C-GARDRASRSKLSRQ, from the internal region of the protein sequence according to NP_443070.6.

Please note the [peptide](#) is available for sale.

Purification and Storage

Purified from goat serum by ammonium sulphate precipitation followed by antigen affinity chromatography using the immunizing peptide.

Supplied at 0.5 mg/ml in Tris saline, 0.02% sodium azide, pH7.3 with 0.5% bovine serum albumin.

Aliquot and store at -20°C. Minimize freezing and thawing.

Applications Tested

Peptide ELISA: antibody detection limit dilution 1:32000.

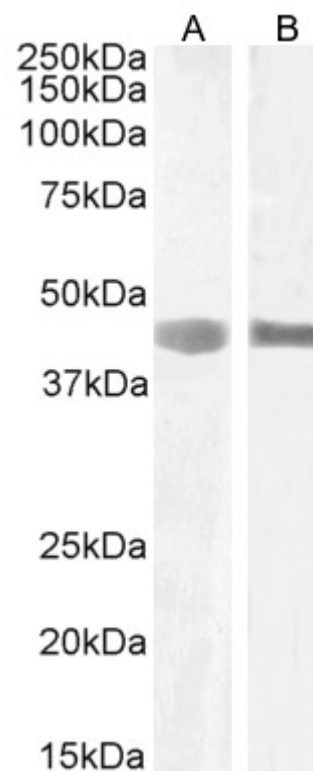
Western blot: Approx 42-45kDa band observed in lysates of cell lines HEK293 and MOLT-4 (calculated MW of 42.4kDa according to NP_443070.6). Recommended concentration: 1-3µg/ml. Primary incubation 1 hour. at room temperature.

IHC: Paraffin embedded Human Spleen. Recommended concentration: 6-8µg/ml.

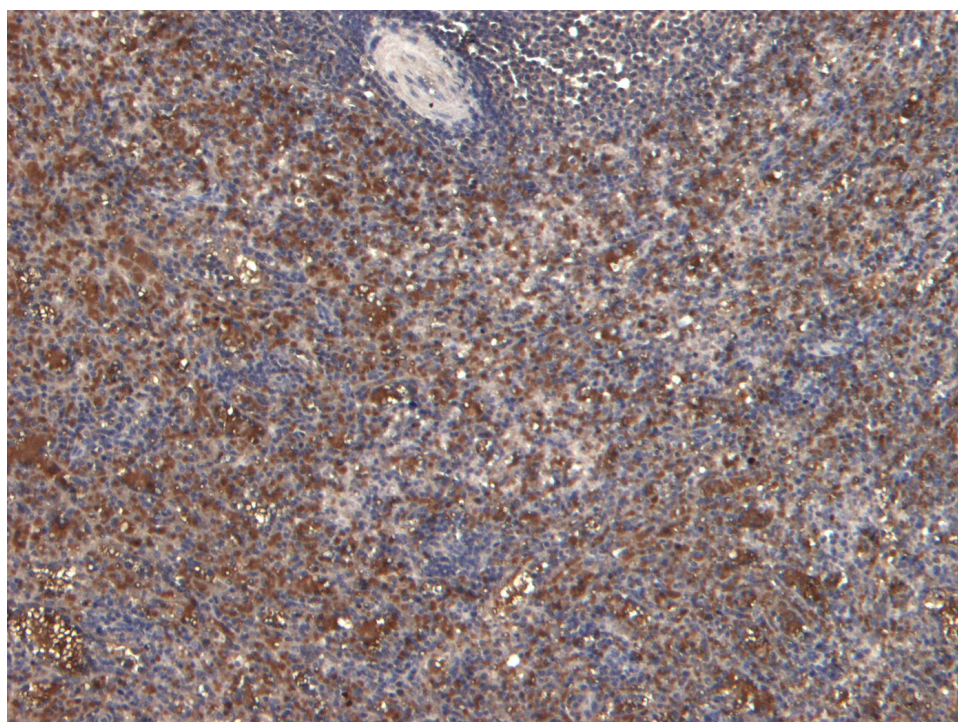
Species Reactivity

Tested: Human

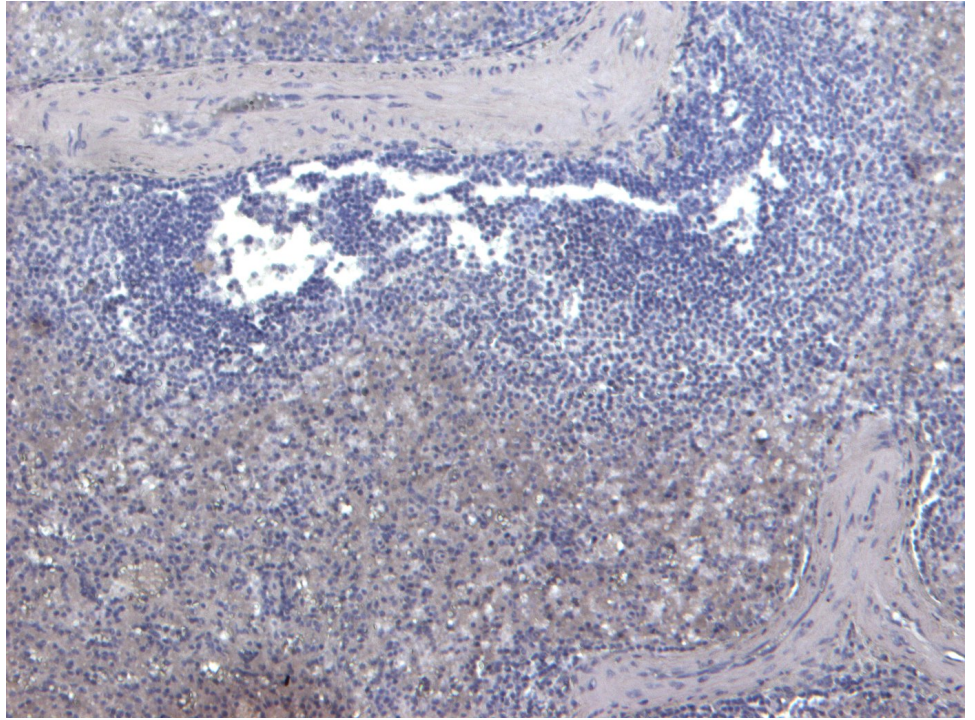
Expected from sequence similarity: Human, Mouse, Rat, Dog



EB07412 (1 μ g/ml) staining of HEK293 (A) and (2 μ g/ml) MOLT-4 (B) cell lysate (35 μ g protein in RIPA buffer).
Detected by chemiluminescence



EB07412 (6 μ g/ml) staining of paraffin embedded Human Spleen. Heat induced antigen retrieval with citrate buffer pH 6, HRP-staining.



EB07412 Negative Control showing staining of paraffin embedded Human Spleen, with no primary antibody.