



## UK Office

### Everest Biotech Ltd

Cherwell Innovation Centre  
77 Heyford Park  
Upper Heyford  
Oxfordshire  
OX25 5HD  
UK

Enquiries:

[info@everestbiotech.com](mailto:info@everestbiotech.com)

Sales:

[sales@everestbiotech.com](mailto:sales@everestbiotech.com)

Tech support:

[support@everestbiotech.com](mailto:support@everestbiotech.com)

Tel: +44 (0)1869 238326

[www.everestbiotech.com](http://www.everestbiotech.com)

**Research Use Only. Not for  
diagnostic or therapeutic use.**

## EB07259 - Goat Anti-Serotonin receptor 1B / HTR1B Antibody

Size: 100µg specific antibody in 200µl



### Target Protein

**Principal Names:** HTR1B, 5-hydroxytryptamine (serotonin) receptor 1B, 5-HT1B, 5-HT1DB, HTR1D2, HTR1DB, S12

**Official Symbol:** HTR1B

**Accession Number(s):** NP\_000854.1

**Human GeneID(s):** [3351](#)

**Non-Human GeneID(s):** 15551 (mouse), 25075 (rat)

### Immunogen

Peptide with sequence C-SNEDFKQAFHK, from the C Terminus of the protein sequence according to NP\_000854.1.

Please note the [peptide](#) is available for sale.

### Purification and Storage

Purified from goat serum by ammonium sulphate precipitation followed by antigen affinity chromatography using the immunizing peptide.

Supplied at 0.5 mg/ml in Tris saline, 0.02% sodium azide, pH7.3 with 0.5% bovine serum albumin.

Aliquot and store at -20°C. Minimize freezing and thawing.

### Applications Tested

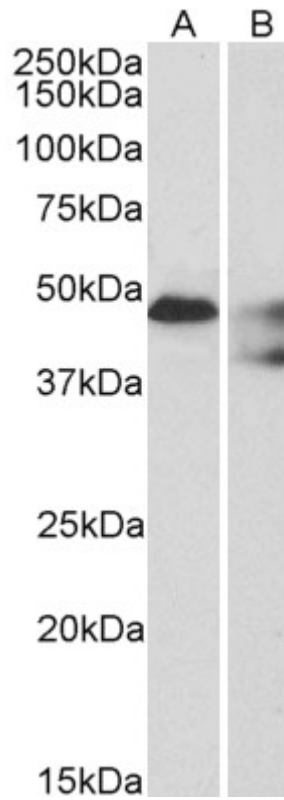
**Peptide ELISA:** antibody detection limit dilution 1:128000.

**Western blot:** Approx 48kDa band observed in Human Brain (Cerebellum) and 48+45kDa band observed in Mouse Spinal Cord lysates (calculated MW of 43.6kDa according to NP\_000854.1). Recommended concentration: 1-3µg/ml. Primary incubation was 1 hour.

### Species Reactivity

**Tested:** Human, Mouse

**Expected from sequence similarity:** Human, Mouse, Rat, Cat, Dog, Pig, Cow



EB07259 (1 $\mu$ g/ml) staining of Human Cerebellum (A) and Mouse spinal cord (B) lysates (35 $\mu$ g protein in RIPA buffer). Detected by chemiluminescence.