

UK Office

Everest Biotech Ltd

Cherwell Innovation Centre
77 Heyford Park
Upper Heyford
Oxfordshire
OX25 5HD
UK

Enquiries:

info@everestbiotech.com

Sales:

sales@everestbiotech.com

Tech support:

support@everestbiotech.com

Tel: +44 (0)1869 238326

www.everestbiotech.com

**Research Use Only. Not for
diagnostic or therapeutic use.**

EB10829 - Goat Anti-SETDB2 Antibody

Size: 100µg specific antibody in 200µl



Target Protein

Principal Names: SETDB2, SET domain, bifurcated 2, C13orf4, CLLD8, CLLL8, DKFZp586l0123, DKFZp761J1217, KMT1F, OTTHUMP00000018418, chronic lymphocytic leukemia deletion region gene 8 protein, histone-lysine N-methyltransferase

Official Symbol: SETDB2

Accession Number(s): NP_114121.2; NP_001153780.1

Human GeneID(s): [83852](#)

Non-Human GeneID(s): 239122 (mouse)

Important Comments: This antibody is expected to recognize both reported isoforms (NP_114121.2; NP_001153780.1).

Immunogen

Peptide with sequence C-QRRHAKTNSHSSALH, from the internal region of the protein sequence according to NP_114121.2; NP_001153780.1.

Please note the [peptide](#) is available for sale.

Purification and Storage

Purified from goat serum by ammonium sulphate precipitation followed by antigen affinity chromatography using the immunizing peptide.

Supplied at 0.5 mg/ml in Tris saline, 0.02% sodium azide, pH7.3 with 0.5% bovine serum albumin.

Aliquot and store at -20°C. Minimize freezing and thawing.

Applications Tested

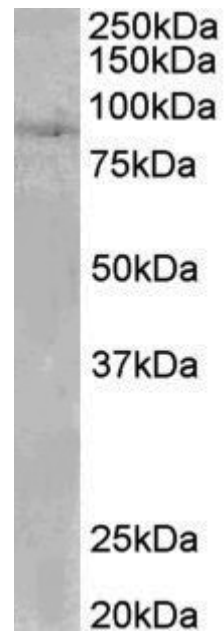
Peptide ELISA: antibody detection limit dilution 1:32000.

Western blot: Approx 90kDa band observed in Human Heart lysates (calculated MW of 81.9kDa according to NP_114121.2). Recommended concentration: 0.1-0.3µg/ml.

Species Reactivity

Tested: Human

Expected from sequence similarity: Human, Mouse, Dog, Pig, Cow



EB10829 (0.1 μ g/ml) staining of Human Heart lysate (35 μ g protein in RIPA buffer). Primary incubation was 1 hour. Detected by chemiluminescence.