



UK Office

Everest Biotech Ltd

Cherwell Innovation Centre
77 Heyford Park
Upper Heyford
Oxfordshire
OX25 5HD
UK

Enquiries:

info@everestbiotech.com

Sales:

sales@everestbiotech.com

Tech support:

support@everestbiotech.com

Tel: +44 (0)1869 238326

www.everestbiotech.com

**Research Use Only. Not for
diagnostic or therapeutic use.**

EB05734 - Goat Anti-SETMAR Antibody

Size: 100µg specific antibody in 200µl



Target Protein

Principal Names: SETMAR, SET domain and mariner transposase fusion gene, METNASE, SET domain and mariner transposase fusion

Official Symbol: SETMAR

Accession Number(s): NP_006506.3

Human GeneID(s): [6419](#)

Immunogen

Peptide with sequence RWQKCVDCNGSYFD, from the C Terminus of the protein sequence according to NP_006506.3.

Please note the [peptide](#) is available for sale.

Purification and Storage

Purified from goat serum by ammonium sulphate precipitation followed by antigen affinity chromatography using the immunizing peptide.

Supplied at 0.5 mg/ml in Tris saline, 0.02% sodium azide, pH7.3 with 0.5% bovine serum albumin.

Aliquot and store at -20°C. Minimize freezing and thawing.

Applications Tested

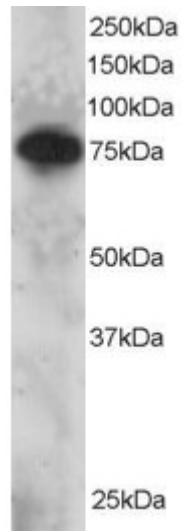
Peptide ELISA: antibody detection limit dilution 1:16000.

Western blot: Approx 70-75kDa band seen in Daudi lysate. Recommended for use at 1-3µg/ml.

Species Reactivity

Tested: Human

Expected from sequence similarity: Human, Cow



EB05734 staining (2 μ g/ml) of Daudi lysate (RIPA buffer, 30 μ g total protein per lane). Primary incubated for 12 hour. Detected by chemiluminescence.