

UK Office

Everest Biotech Ltd

Cherwell Innovation Centre
77 Heyford Park
Upper Heyford
Oxfordshire
OX25 5HD
UK

Enquiries:

info@everestbiotech.com

Sales:

sales@everestbiotech.com

Tech support:

support@everestbiotech.com

Tel: +44 (0)1869 238326

www.everestbiotech.com

**Research Use Only. Not for
diagnostic or therapeutic use.**

EB05540 - Goat Anti-SF3B4 / SAP49 Antibody

Size: 100µg specific antibody in 200µl



Target Protein

Principal Names: SF3B4, SAP49, splicing factor 3b, subunit 4, 49kD, SF3B49, MGC10828, spliceosome-associated protein (U2 snRNP), spliceosomal protein, splicing factor 3b, subunit 4, SF3b49, pre-mRNA splicing factor SF3b 49 kDa subunit, splicing factor 3b, subunit 4

Official Symbol: SF3B4

Accession Number(s): NP_005841.1

Human GeneID(s): [10262](#)

Non-Human GeneID(s): 107701 (mouse)

Immunogen

Peptide with sequence AAGPISERNQDAT-C, from the N Terminus of the protein sequence according to NP_005841.1.

Please note the [peptide](#) is available for sale.

Purification and Storage

Purified from goat serum by ammonium sulphate precipitation followed by antigen affinity chromatography using the immunizing peptide.

Supplied at 0.5 mg/ml in Tris saline, 0.02% sodium azide, pH7.3 with 0.5% bovine serum albumin.

Aliquot and store at -20°C. Minimize freezing and thawing.

Applications Tested

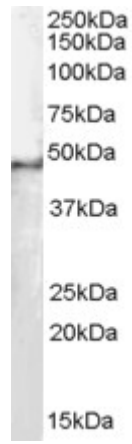
Peptide ELISA: antibody detection limit dilution 1:32000.

Western blot: Approx 48kDa band observed in Human HeLa lysates (calculated MW of 44.4kDa according to NP005841.1). Recommended concentration: 0.1-0.3µg/ml.

Species Reactivity

Tested: Human

Expected from sequence similarity: Human, Mouse, Rat, Dog, Pig, Cow



EB05540 staining (0.1 µg/ml) of HeLa lysate (RIPA buffer, 35 µg total protein per lane). Primary incubated for 1 hour. Detected by western blot using chemiluminescence.