



## UK Office

### Everest Biotech Ltd

Cherwell Innovation Centre  
77 Heyford Park  
Upper Heyford  
Oxfordshire  
OX25 5HD  
UK

Enquiries:

[info@everestbiotech.com](mailto:info@everestbiotech.com)

Sales:

[sales@everestbiotech.com](mailto:sales@everestbiotech.com)

Tech support:

[support@everestbiotech.com](mailto:support@everestbiotech.com)

Tel: +44 (0)1869 238326

[www.everestbiotech.com](http://www.everestbiotech.com)

**Research Use Only. Not for  
diagnostic or therapeutic use.**

## EB11380 - Goat Anti-SFTPA1 / SFTPA2 (aa102-115) Antibody

Size: 100µg specific antibody in 200µl



### Target Protein

**Principal Names:** 35 kDa pulmonary surfactant-associated protein, alveolar proteinosis protein, COLEC4, collectin-4, FLJ50593, FLJ51913, FLJ61144, FLJ77898, FLJ79095, FLJ99559, MGC133365, MGC198590, OTTHUMP00000019928, OTTHUMP00000019929, OTTHUMP00000019930, OTTHUMP00000019931, PSAP, PSPA, PSP-A, pulmonary surfactant-associated protein A1, SFTP1, SFTPA1B, SPA, SP-A, SPA1, SP-A1, surfactant protein A1, surfactant protein A1 variant AB'D' 6A2, surfactant protein A1 variant AB'D' 6A3, surfactant protein A1 variant AB'D' 6A4, surfactant protein A1 variant ACD' 6A2, surfactant protein A1 variant ACD' 6A3, surfactant protein A1 variant ACD' 6A4, surfactant protein A1 variant AD' 6A, surfactant protein A1 variant AD' 6A2, surfactant protein A1 variant AD' 6A3, surfactant protein A1 variant AD' 6A4, surfactant protein A1B, surfactant, pulmonary-associated protein A1A, surfactant, pulmonary-associated protein A1B, SFTPA1

**Official Symbol:** SFTPA1

**Accession Number(s):** NP\_005402.3; NP\_001087239.2; NP\_001158117.1; NP\_001158118.1; NP\_001092138.1

**Human GeneID(s):** [653509](#) , [729238](#)

**Important Comments:** This antibody is expected to recognize all the reported isoforms of A1 (NP\_005402.3; NP\_001087239.2; NP\_001158117.1; NP\_001158118.1) and A2 (NP\_001092138.1), Reported variants represent identical protein: NP\_001158116.1, NP\_005402.3, NP\_001158119.1

### Immunogen

Peptide with sequence C-HLDEELQATLHDFR, from the internal region of the protein sequence according to NP\_005402.3; NP\_001087239.2; NP\_001158117.1; NP\_001158118.1; NP\_001092138.1.

Please note the [peptide](#) is available for sale.

### Purification and Storage

Purified from goat serum by ammonium sulphate precipitation followed by antigen affinity chromatography using the immunizing peptide.

Supplied at 0.5 mg/ml in Tris saline, 0.02% sodium azide, pH7.3 with 0.5% bovine serum albumin.

Aliquot and store at -20°C. Minimize freezing and thawing.

### Applications Tested

**Peptide ELISA:** antibody detection limit dilution 1:32000.

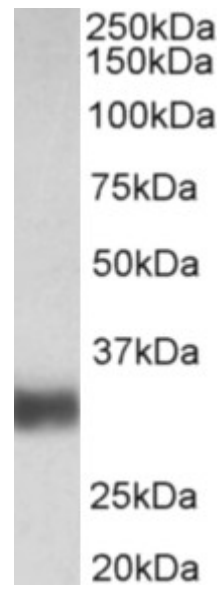
**Western blot:** Approx 30kDa band observed in Human Lung lysates (calculated MW of 27.7kDa according to NP\_001087239.2). Recommended concentration: 0.01-0.03µg/ml.

**IHC:** Paraffin embedded Human Lung. Recommended concentration: 5µg/ml.

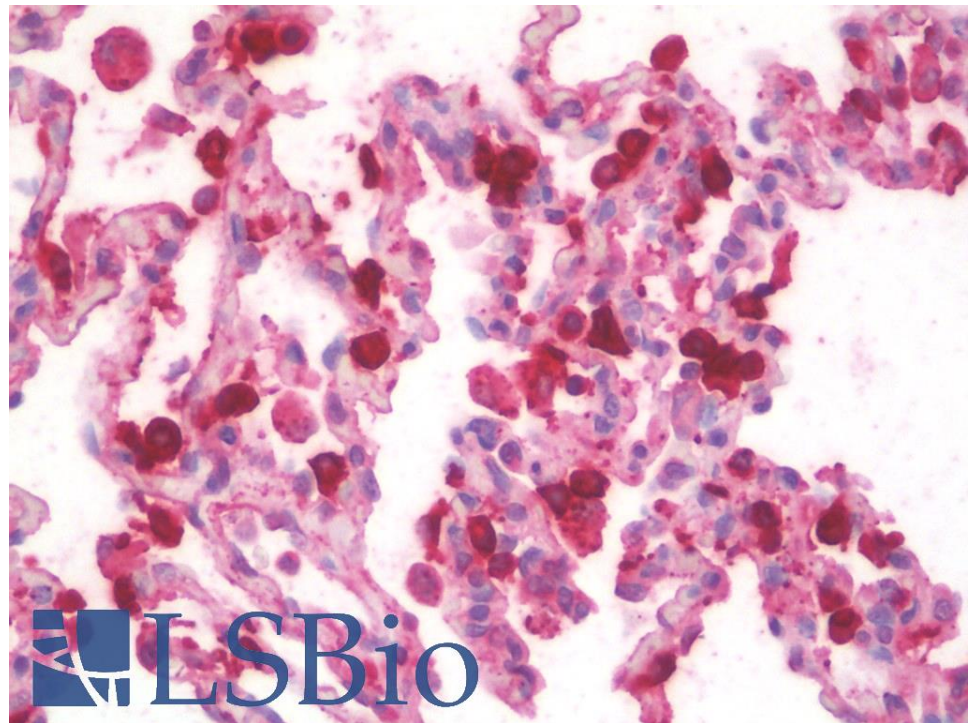
### Species Reactivity

**Tested:** Human

**Expected from sequence similarity:** Human, Cow



EB11380 (0.01 $\mu$ g/ml) staining of Human Lung lysate (35 $\mu$ g protein in RIPA buffer). Primary incubation was 1 hour. Detected by chemiluminescence.



EB11380 (5 $\mu$ g/ml) staining of paraffin embedded Human Lung. Steamed antigen retrieval with citrate buffer pH 6, AP-staining.