

International Office

Everest Biotech Ltd

Vector Laboratories, Inc.
6737 Mowry Ave
Newark, CA 94560
United States

Customer Service:

customerservice@vectorlabs.com

Technical Service:

technical@vectorlabs.com

Tel: +1 (800) 227-6666

www.everestbiotech.com

**Research Use Only. Not for
diagnostic or therapeutic use.**

EB09396 - Goat Anti-SGK Antibody

Size: 100µg specific antibody in 200µl



Target Protein

Principal Names: SGK1, serum/glucocorticoid regulated kinase 1, SGK, OTTHUMP00000017247, serine/threonine protein kinase SGK, serum and glucocorticoid regulated kinase

Official Symbol: SGK1

Accession Number(s): NP_005618.2

Human GeneID(s): [6446](#)

Non-Human GeneID(s): 20393 (mouse), 29517 (rat)

Immunogen

Peptide with sequence C-TEEPVPNSIGKSPD, from the C Terminus of the protein sequence according to NP_005618.2.

Please note the [peptide](#) is available for sale.

Purification and Storage

Purified from goat serum by ammonium sulphate precipitation followed by antigen affinity chromatography using the immunizing peptide.

Supplied at 0.5 mg/ml in Tris saline, 0.02% sodium azide, pH7.3 with 0.5% bovine serum albumin.

Aliquot and store at -20°C. Minimize freezing and thawing.

Applications Tested

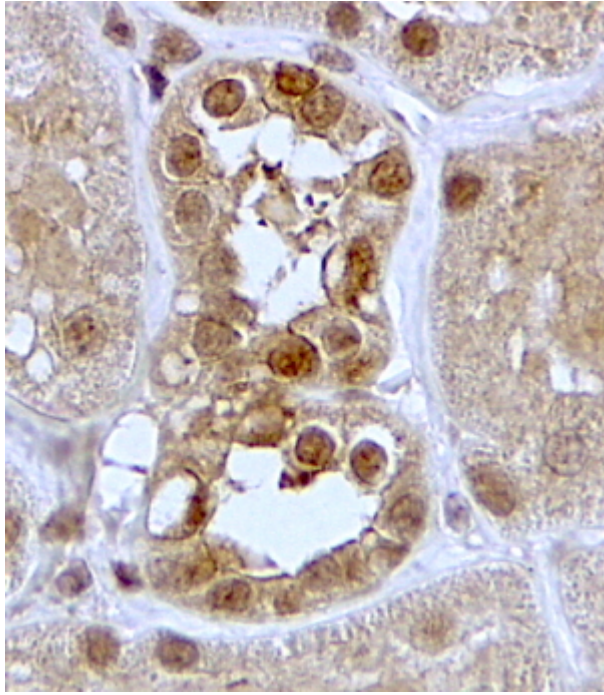
Peptide ELISA: antibody detection limit dilution 1:4000.

IHC: In paraffin embedded Human Kidney shows membrane and nuclear stains in epithelial cells of DCT. Recommended concentration, 2-4µg/ml.

Species Reactivity

Tested: Human

Expected from sequence similarity: Human, Mouse, Rat, Dog, Cow



EB09396 (2 μ g/ml) staining of paraffin embedded Human Kidney. Steamed antigen retrieval with citrate buffer pH 6, HRP-staining.