

UK Office

Everest Biotech Ltd

Cherwell Innovation Centre
77 Heyford Park
Upper Heyford
Oxfordshire
OX25 5HD
UK

Enquiries:

info@everestbiotech.com

Sales:

sales@everestbiotech.com

Tech support:

support@everestbiotech.com

Tel: +44 (0)1869 238326

www.everestbiotech.com

**Research Use Only. Not for
diagnostic or therapeutic use.**

EB09310 - Goat Anti-SGLT1 Antibody

Size: 100µg specific antibody in 200µl



Target Protein

Principal Names: SLC5A1, solute carrier family 5 (sodium/glucose cotransporter), member 1, D22S675, NAGT, SGLT1, Human Na⁺/glucose cotransporter 1 mRNA, complete cds, sodium/glucose cotransporter 1, solute carrier family 5 (sodium/glucose transporter), member 1

Official Symbol: SLC5A1

Accession Number(s): NP_000334.1; NP_001243243.1

Human GeneID(s): [6523](#)

Important Comments: This antibody is expected to recognize isoforms 1 ((NP_000334.1) and isoform 2 (NP_001243243.1).

Immunogen

Peptide with sequence C-KETIEIETQVPEKKK, from the internal region of the protein sequence according to NP_000334.1; NP_001243243.1.

Please note the [peptide](#) is available for sale.

Purification and Storage

Purified from goat serum by ammonium sulphate precipitation followed by antigen affinity chromatography using the immunizing peptide.

Supplied at 0.5 mg/ml in Tris saline, 0.02% sodium azide, pH7.3 with 0.5% bovine serum albumin.

Aliquot and store at -20°C. Minimize freezing and thawing.

Applications Tested

Peptide ELISA: antibody detection limit dilution 1:32000.

Western blot: Preliminary testing showed a band at approx. 60kDa in Human Gall Bladder lysate and in Jurkat cell lysate after 1-3µg/ml antibody staining (calculated MW of 60.1kDa according to NP_001243243.1). Primary incubation 1 hour at room temperature.

IHC: Paraffin embedded Human Small Intestine. Recommended concentration: 5µg/ml.

Species Reactivity

Tested: Human

Expected from sequence similarity: Human

Specific References

This antibody (previous batch) has been successfully used in Western blot and IHC on Mouse:

Barun Das, Kevin Okamoto, John Rabalais, Jocelyn A. Young, Kim E.

Barrett, and Mamata Sivagnanam

Aberrant Epithelial Differentiation Contributes to Pathogenesis in a Murine Model of Congenital Tufting Enteropathy.

Cell Mol Gastroenterol Hepatol. 2021; 12(4): 1353-1371.

PMID: 34198013

This antibody (previous batch) has been successfully used in Western blot on Mouse:

Yui Yamazaki, Kyoko Arita, Shinichi Harada, Shogo Tokuyama

Activation of c-Jun N-terminal kinase and p38 after cerebral ischemia upregulates cerebral sodium-glucose transporter type 1

Journal of Pharmacological Sciences (November 2018)

PMID: 30503674

This antibody (previous batch) has been successfully used in Western blot on

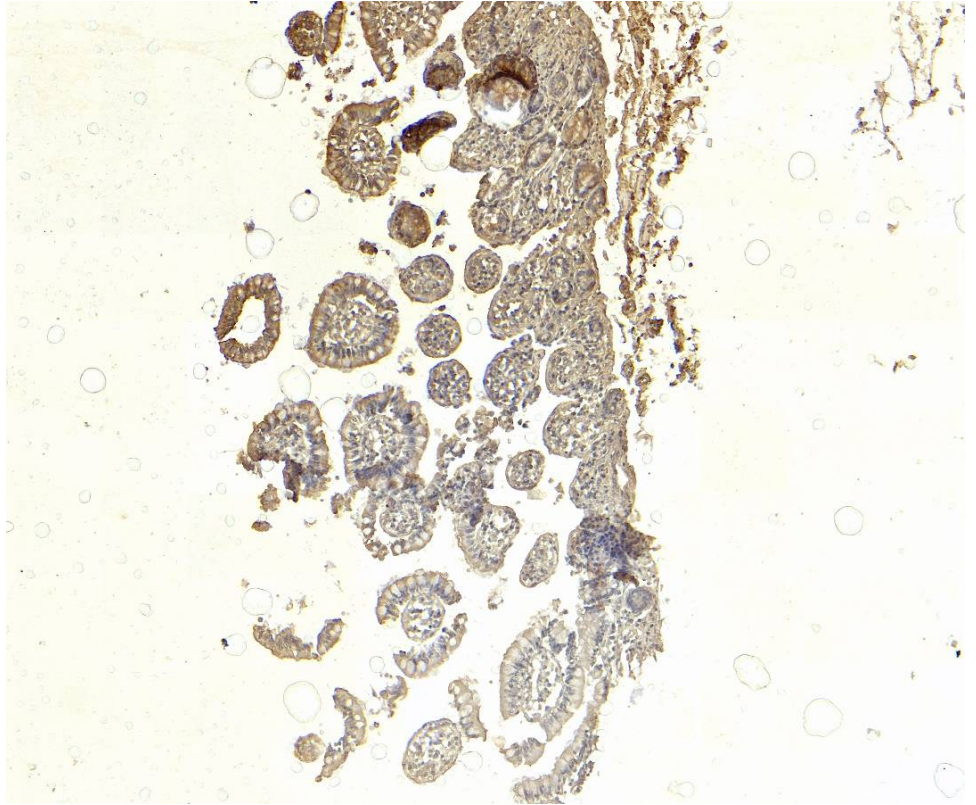
Mouse:

Yamazaki Y, Harada S, Wada T, Hagiwara T, Yoshida S, Tokuyama S

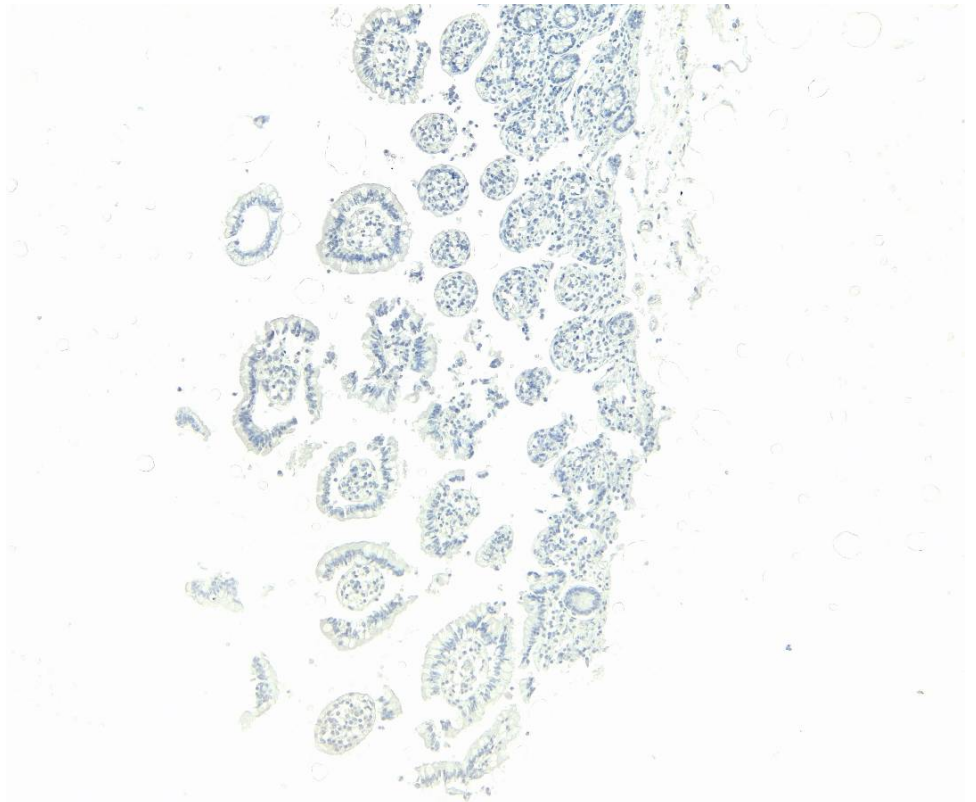
Sodium influx through cerebral sodium-glucose transporter type 1 exacerbates the development of c

Eur J Pharmacol. 2017 Mar 15;799:103-110.

PMID: 28174043



EB09310 (5µg/ml) staining of paraffin embedded Human Small Intestine. Heat induced antigen retrieval with citrate buffer pH 6, HRP-staining.



EB09310 Negative Control showing staining of paraffin embedded Human Small Intestine, with no primary antibody.