



## UK Office

### Everest Biotech Ltd

Cherwell Innovation Centre  
77 Heyford Park  
Upper Heyford  
Oxfordshire  
OX25 5HD  
UK

Enquiries:

[info@everestbiotech.com](mailto:info@everestbiotech.com)

Sales:

[sales@everestbiotech.com](mailto:sales@everestbiotech.com)

Tech support:

[support@everestbiotech.com](mailto:support@everestbiotech.com)

Tel: +44 (0)1869 238326

Fax: +44 (0)1869 238327

## US Office

### Everest Biotech c/o Abcore

405 Maple Street, Suite A106  
Ramona,  
CA 92065  
USA

Inquiries:

[info@everestbiotech.com](mailto:info@everestbiotech.com)

Sales:

[usasales@everestbiotech.com](mailto:usasales@everestbiotech.com)

Tech support:

[support@everestbiotech.com](mailto:support@everestbiotech.com)

Tel: 888-320-4628 (toll-free)

Fax: 888-841-9041

[www.everestbiotech.com](http://www.everestbiotech.com)

**Research Use Only. Not for  
diagnostic or therapeutic use.**

## EB06826 - Goat Anti-SH2D1A / SAP Antibody

Size: 100µg specific antibody in 200µl



### Target Protein

**Principal Names:** SH2D1A, SAP, SH2 domain protein 1A, Duncan\1s disease (lymphoproliferative syndrome), HGNC:10820, DSHP, EBVS, IMD5, LYP, MTCP1, XLP, XLPD, SH2 domain protein 1A, SLAM (signaling lymphocyte activation molecule) associated protein, RP5-1052M9.3, FLJ18687, FLJ92177, SLAM-associated protein, T cell signal transduction molecule SAP, signaling lymphocyte activation molecule-associated protein

**Official Symbol:** SH2D1A

**Accession Number(s):** NP\_002342.1; NP\_001108409.1

**Human GeneID(s):** [4068](#)

### Immunogen

Peptide with sequence C-HKRYFRKIKN, from the internal region of the protein sequence according to NP\_002342.1; NP\_001108409.1.

Please note the [peptide](#) is available for sale.

### Purification and Storage

Purified from goat serum by ammonium sulphate precipitation followed by antigen affinity chromatography using the immunizing peptide.

Supplied at 0.5 mg/ml in Tris saline, 0.02% sodium azide, pH7.3 with 0.5% bovine serum albumin.

Aliquot and store at -20°C. Minimize freezing and thawing.

### Applications Tested

**Peptide ELISA:** antibody detection limit dilution 1:16000.

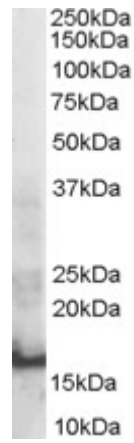
**Western blot:** Approx 16kDa band observed in Human Thymus lysates (calculated MW of 14.2kDa according to NP\_002342.1). In transfected HEK293 transiently expressing SH2D1A a band of approx. 16kDa is observed. This band is not observed in the non-transfected HEK293. Recommended concentration: 0.3-1µg/ml.

**Immunoprecipitation:** This antibody was deemed fit for IP under native conditions (observations from anonymous customer).

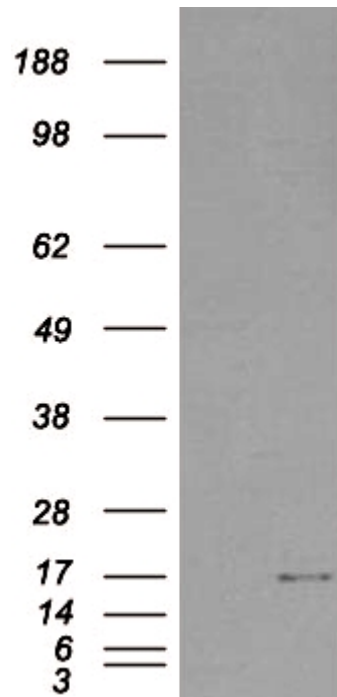
### Species Reactivity

**Tested:** Human

**Expected from sequence similarity:** Human, Mouse, Rat



EB06826 staining (0.3µg/ml) of Human Thymus lysate (RIPA buffer, 30µg total protein per lane). Primary incubated for 1 hour. Detected by western blot using chemiluminescence.



HEK293 overexpressing SH2D1A (RC204723) and probed with EB06826 (mock transfection in first lane), tested by Origene.