



## UK Office

### Everest Biotech Ltd

Cherwell Innovation Centre  
77 Heyford Park  
Upper Heyford  
Oxfordshire  
OX25 5HD  
UK

Enquiries:

[info@everestbiotech.com](mailto:info@everestbiotech.com)

Sales:

[sales@everestbiotech.com](mailto:sales@everestbiotech.com)

Tech support:

[support@everestbiotech.com](mailto:support@everestbiotech.com)

Tel: +44 (0)1869 238326

Fax: +44 (0)1869 238327

## US Office

### Everest Biotech c/o Abcore

405 Maple Street, Suite A106  
Ramona,  
CA 92065  
USA

Inquiries:

[info@everestbiotech.com](mailto:info@everestbiotech.com)

Sales:

[usasales@everestbiotech.com](mailto:usasales@everestbiotech.com)

Tech support:

[support@everestbiotech.com](mailto:support@everestbiotech.com)

Tel: 888-320-4628 (toll-free)

Fax: 888-841-9041

[www.everestbiotech.com](http://www.everestbiotech.com)

**Research Use Only. Not for  
diagnostic or therapeutic use.**

## EB06271 - Goat Anti-SH3BP1 Antibody

Size: 100µg specific antibody in 200µl



### Target Protein

**Principal Names:** SH3BP1, SH3-domain binding protein 1, SH3 domain binding protein 1, OTTHUMP00000028981

**Official Symbol:** SH3BP1

**Accession Number(s):** NP\_061830.3

**Human GeneID(s):** [23616](#)

### Immunogen

Peptide with sequence C-PQPRPRSLASETN, from the C Terminus of the protein sequence according to NP\_061830.3.

Please note the [peptide](#) is available for sale.

### Purification and Storage

Purified from goat serum by ammonium sulphate precipitation followed by antigen affinity chromatography using the immunizing peptide.

Supplied at 0.5 mg/ml in Tris saline, 0.02% sodium azide, pH7.3 with 0.5% bovine serum albumin.

Aliquot and store at -20°C. Minimize freezing and thawing.

### Applications Tested

**Peptide ELISA:** antibody detection limit dilution 1:16000.

**Western blot:** Approx 70kDa band observed in Human Lung and Kidney lysates (calculated MW of 75.7kDa according to NP\_061830.3). Recommended for use at 1-3µg/ml.

**IHC:** In paraffin embedded Human Kidney, stains the cytoplasm of lymphoid cells in the interstitial parenchyma and of lymphocytes in a glomerulus. Recommended concentration: 0.3µg/ml.

**Immunocytochemistry:** This antibody has proved to work very well in Caco-2 cells in Elbediwy et al, J.Biol. Chem, 2012 (in press).

### Species Reactivity

**Tested:** Human

**Expected from sequence similarity:** Human

### Background Reference

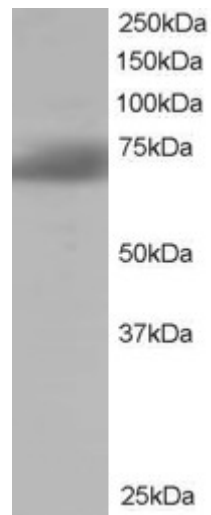
**This antibody has been successfully used in Time-lapse microscopy on Rat:**

Parrini MC, Sadou-Dubourgoux A, Aoki K, Kunida K, Biondini M, Hatzoglou A, Pouillet P, Formstecher E, Yeaman C, Matsuda M, Rossé C, Camonis J.

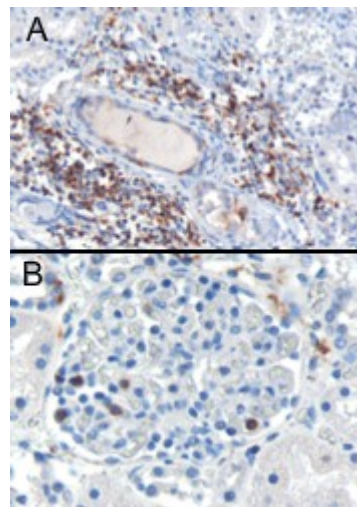
SH3BP1, an exocyst-associated RhoGAP, inactivates Rac1 at the front to drive cell motility.

Mol Cell. 2011 Jun 10;42(5):650-61.

PMID: 21658605



EB06271 staining (1 $\mu$ g/ml) of Human Brain lysate (RIPA buffer, 35 $\mu$ g total protein per lane). Primary incubated for 1 hour. Detected by chemiluminescence.



EB06271 (0.3 $\mu$ g/ml) staining of paraffin embedded Human Kidney. Cytoplasmic staining of lymphocytes A) in the interstitial parenchyma of the kidney. B) in a glomerulus of the kidney. Microwaved antigen retrieval with citrate buffer pH 6, HRP-staining.