



UK Office

Everest Biotech Ltd

Cherwell Innovation Centre
77 Heyford Park
Upper Heyford
Oxfordshire
OX25 5HD
UK

Enquiries:

info@everestbiotech.com

Sales:

sales@everestbiotech.com

Tech support:

support@everestbiotech.com

Tel: +44 (0)1869 238326

Fax: +44 (0)1869 238327

US Office

Everest Biotech c/o Abcore

405 Maple Street, Suite A106
Ramona,
CA 92065
USA

Inquiries:

info@everestbiotech.com

Sales:

usasales@everestbiotech.com

Tech support:

support@everestbiotech.com

Tel: 888-320-4628 (toll-free)

Fax: 888-841-9041

www.everestbiotech.com

**Research Use Only. Not for
diagnostic or therapeutic use.**

EB05436 - Goat Anti-SH3KBP1 (N Terminus) Antibody

Size: 100µg specific antibody in 200µl



Target Protein

Principal Names: SH3KBP1, SH3-domain kinase binding protein 1, RP11-345L8.1, CD2BP3, CIN85, GIG10, HSB-1, HSB1, MIG18, CD2-binding protein 3, OTTHUMP00000023022, OTTHUMP00000023024, OTTHUMP00000023025, OTTHUMP00000023028, SH3 domain-containing kinase-binding protein 1, Src family kinase-binding protein 1, c-Cbl-interacting protein, cbl-interacting protein of 85 kDa, human Src family kinase-binding protein 1, migration-inducing gene 18, src-related kinase binding protein-1

Official Symbol: SH3KBP1

Accession Number(s): NP_114098.1

Human GeneID(s): [30011](#)

Non-Human GeneID(s): 58194 (mouse), 84357 (rat)

Important Comments: This antibody is expected to recognize isoform a (NP_114098.1) only.

Immunogen

Peptide with sequence VEAIVEFDYQAQH-C, from the N Terminus of the protein sequence according to NP_114098.1.

Please note the [peptide](#) is available for sale.

Purification and Storage

Purified from goat serum by ammonium sulphate precipitation followed by antigen affinity chromatography using the immunizing peptide.

Supplied at 0.5 mg/ml in Tris saline, 0.02% sodium azide, pH7.3 with 0.5% bovine serum albumin.

Aliquot and store at -20°C. Minimize freezing and thawing.

Applications Tested

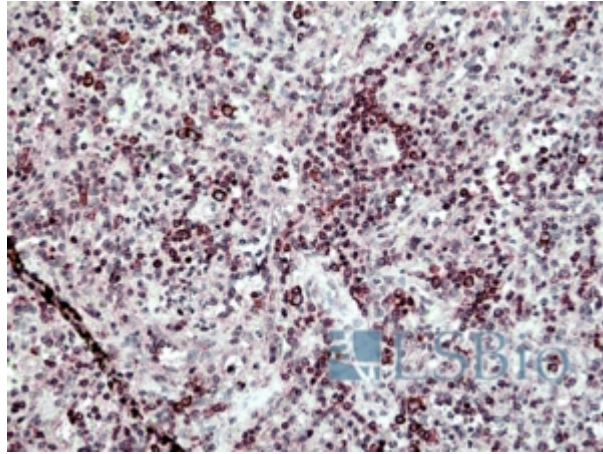
Peptide ELISA: antibody detection limit dilution 1:4000.

IHC: Paraffin embedded Human Spleen, Tonsil and Placenta. Recommended concentration: 2.5µg/ml.

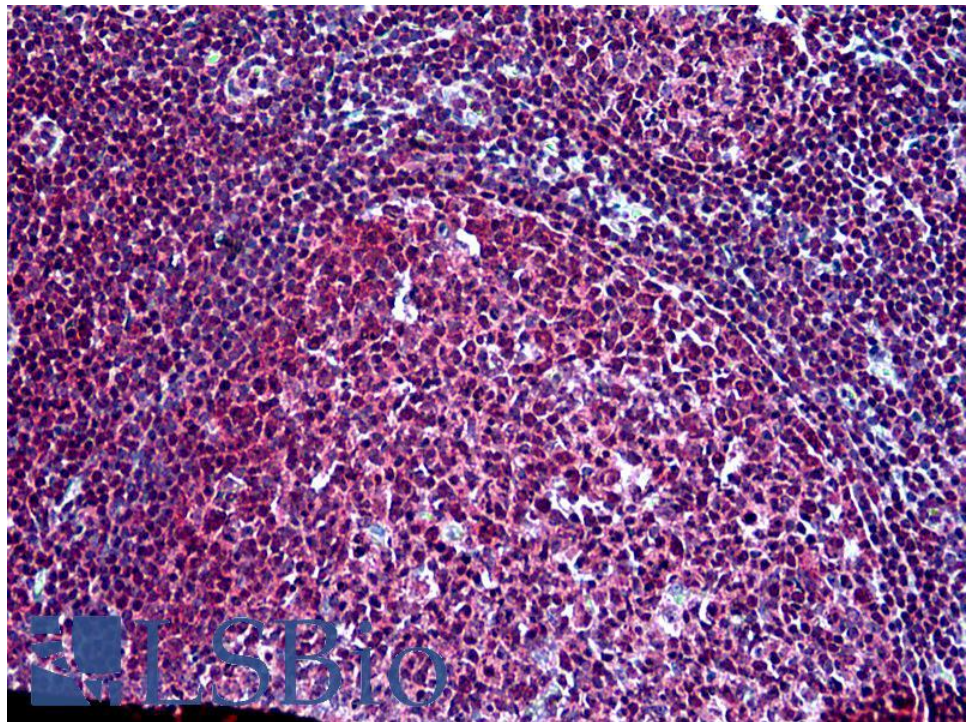
Species Reactivity

Tested: Human

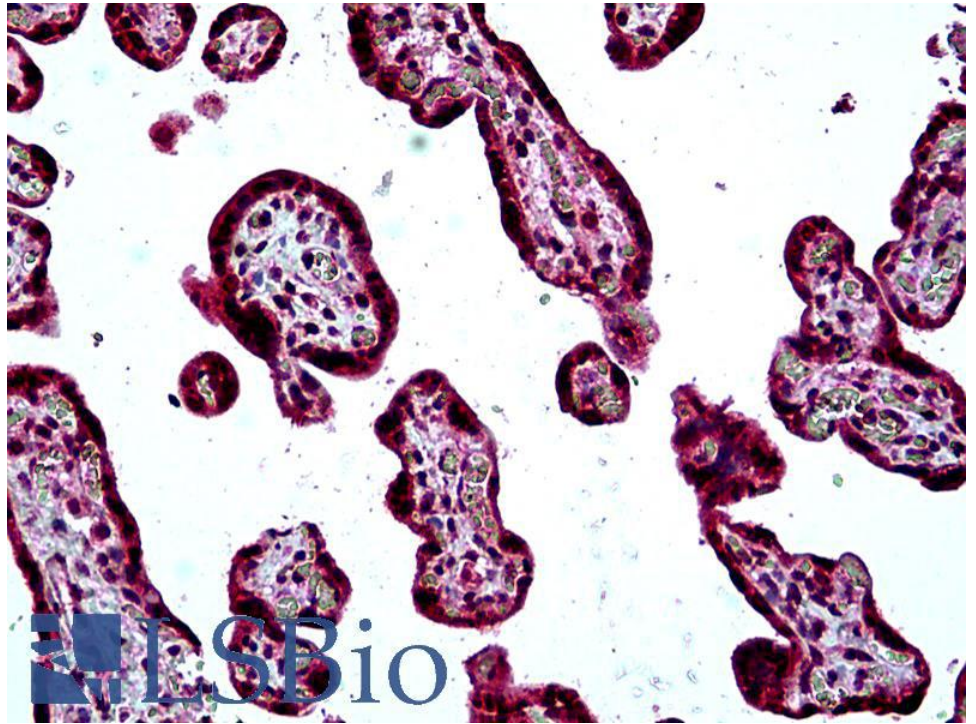
Expected from sequence similarity: Human, Mouse, Rat, Dog, Cow



EB05436 (2.5µg/ml) staining of paraffin embedded Human Spleen. Steamed antigen retrieval with citrate buffer pH 6, AP-staining.



EB05436 (2.5µg/ml) staining of paraffin embedded Human Tonsil. Steamed antigen retrieval with citrate buffer pH 6, AP-staining.



EB05436 (2.5µg/ml) staining of paraffin embedded Human Placenta. Steamed antigen retrieval with citrate buffer pH 6, AP-staining.