



## International Office

### Everest Biotech Ltd

Vector Laboratories, Inc.  
6737 Mowry Ave  
Newark, CA 94560  
United States

Customer Service:

[customerservice@vectorlabs.com](mailto:customerservice@vectorlabs.com)

Technical Service:

[technical@vectorlabs.com](mailto:technical@vectorlabs.com)

Tel: +1 (800) 227-6666

[www.everestbiotech.com](http://www.everestbiotech.com)

**Research Use Only. Not for  
diagnostic or therapeutic use.**

## EB05114 - Goat Anti-SHP2 / PTPN11 Antibody

Size: 100µg specific antibody in 200µl



### Target Protein

**Principal Names:** PTPN11, SHP2, protein tyrosine phosphatase, non-receptor type 11 (Noonan syndrome 1), CFC, NS1, BPTP3, PTP2C, SHP-2, PTP-1D, SH-PTP2, SH-PTP3, Noonan syndrome 1, protein-tyrosine phosphatase 2C, protein tyrosine phosphatase, non-receptor type 11, MGC14433, protein tyrosine phosphatase-2

**Official Symbol:** PTPN11

**Accession Number(s):** NP\_002825.3; NP\_001317366.1

**Human GeneID(s):** [5781](#)

**Non-Human GeneID(s):** 19247 (mouse), 25622 (rat)

### Immunogen

Peptide with sequence C-YENVGLMQQKSFR, from the C Terminus of the protein sequence according to NP\_002825.3; NP\_001317366.1.

Please note the [peptide](#) is available for sale.

### Purification and Storage

Purified from goat serum by ammonium sulphate precipitation followed by antigen affinity chromatography using the immunizing peptide.

Supplied at 0.5 mg/ml in Tris saline, 0.02% sodium azide, pH7.3 with 0.5% bovine serum albumin.

Aliquot and store at -20°C. Minimize freezing and thawing.

### Applications Tested

**Peptide ELISA:** antibody detection limit dilution 1:128000.

**Western blot:** Approx 70kDa band observed in Human Muscle lysates (calculated MW of 68.0kDa according to NP\_002825.3). Recommended concentration: 1-3µg/ml. Primary incubation 1 hour at room temperature.

**Immunofluorescence:** Strong expression of the protein seen in the nuclei and cytoplasm of HeLa cells. Recommended concentration: 10µg/ml.

**Flow Cytometry:** Flow cytometric analysis of A431 cells. Recommended concentration: 10ug/ml.

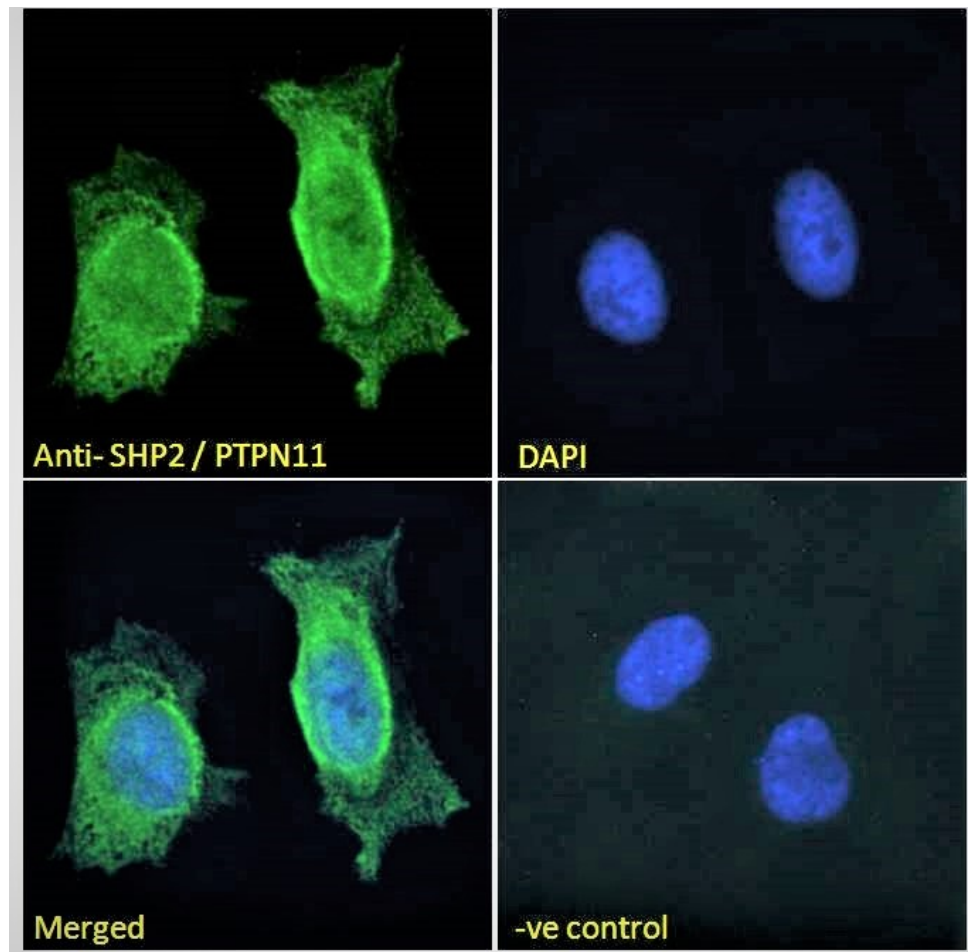
### Species Reactivity

**Tested:** Human

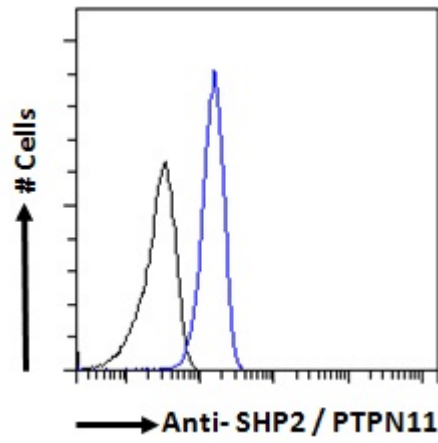
**Expected from sequence similarity:** Human, Mouse, Rat, Pig, Cow

250kDa  
150kDa  
100kDa  
75kDa  
50kDa  
37kDa  
25kDa  
20kDa  
15kDa  
10kDa

EB05114 staining (2µg/ml) of Human Muscle lysate (RIPA buffer, 35µg total protein per lane). Detected by chemiluminescence.



EB05114 Immunofluorescence analysis of paraformaldehyde fixed HeLa cells, permeabilized with 0.15% Triton. Primary incubation 1hr (10ug/ml) followed by Alexa Fluor 488 secondary antibody (2ug/ml), showing nuclear and cytoplasmic staining. The nuclear stain is DAPI (blue). Negative control: Unimmunized goat IgG (10ug/ml) followed by Alexa Fluor 488 secondary antibody (2ug/ml).



EB05114 Flow cytometric analysis of paraformaldehyde fixed A431 cells (blue line), permeabilized with 0.5% Triton. Primary incubation 1hr (10ug/ml) followed by Alexa Fluor 488 secondary antibody (1ug/ml). IgG control: Unimmunized goat IgG (black line) followed by Alexa Fluor 488 secondary antibody.