



UK Office

Everest Biotech Ltd

Cherwell Innovation Centre
77 Heyford Park
Upper Heyford
Oxfordshire
OX25 5HD
UK

Enquiries:

info@everestbiotech.com

Sales:

sales@everestbiotech.com

Tech support:

support@everestbiotech.com

Tel: +44 (0)1869 238326

Fax: +44 (0)1869 238327

US Office

Everest Biotech c/o Abcore

405 Maple Street, Suite A106
Ramona,
CA 92065
USA

Inquiries:

info@everestbiotech.com

Sales:

usasales@everestbiotech.com

Tech support:

support@everestbiotech.com

Tel: 888-320-4628 (toll-free)

Fax: 888-841-9041

www.everestbiotech.com

**Research Use Only. Not for
diagnostic or therapeutic use.**

EB05683 - Goat Anti-SIAHBP1 / FIR Antibody

Size: 100µg specific antibody in 200µl



Target Protein

Principal Names: PUF60, SIAHBP1, FIR, fuse-binding protein-interacting repressor, RoBPI, siah binding protein 1, poly-U binding splicing factor PUF60, Ro ribonucleoprotein-binding protein 1, pyrimidine tract binding splicing factor, poly-U binding splicing factor 60KDa, FLJ31379, FBP interacting repressor, Ro ribonucleoprotein binding protein 1

Official Symbol: PUF60

Accession Number(s): NP_510965.1; NP_055096.2; NP_001129505.1

Human GeneID(s): [22827](#)

Non-Human GeneID(s): 67959 (mouse)

Important Comments: This antibody is expected to recognise all reported human isoforms (as represented by NP_510965.1; NP_055096.2; NP_001129505.1)

Immunogen

Peptide with sequence C-YDQERFDNSDLSA, from the C Terminus of the protein sequence according to NP_510965.1; NP_055096.2; NP_001129505.1.

Please note the [peptide](#) is available for sale.

Purification and Storage

Purified from goat serum by ammonium sulphate precipitation followed by antigen affinity chromatography using the immunizing peptide.

Supplied at 0.5 mg/ml in Tris saline, 0.02% sodium azide, pH7.3 with 0.5% bovine serum albumin.

Aliquot and store at -20°C. Minimize freezing and thawing.

Applications Tested

Peptide ELISA: antibody detection limit dilution 1:32000.

Western blot: Approx 60kDa band observed in Human lysates of HEK293 (calculated MW of 59.9kDa according to NP_510965.1 and 58.2 according to NP_055096.2).

Recommended concentration: 0.1-0.3µg/ml. Primary incubation was 1 hour.

IHC: Paraffin embedded Human Prostate and Skin. Recommended concentration: 5µg/ml.

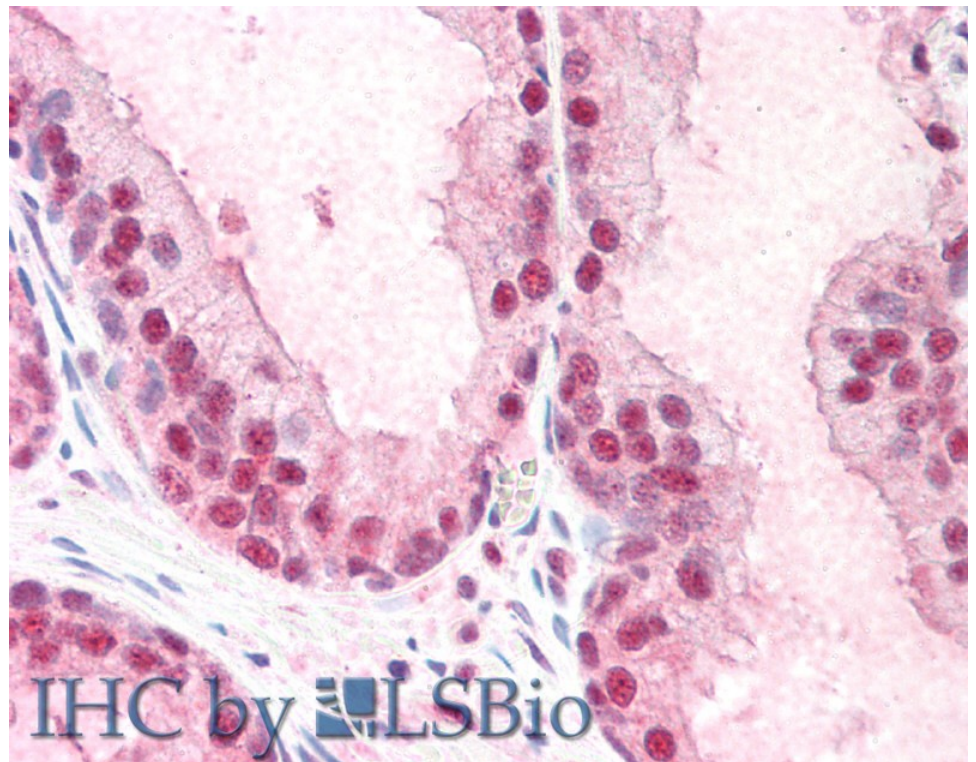
Species Reactivity

Tested: Human

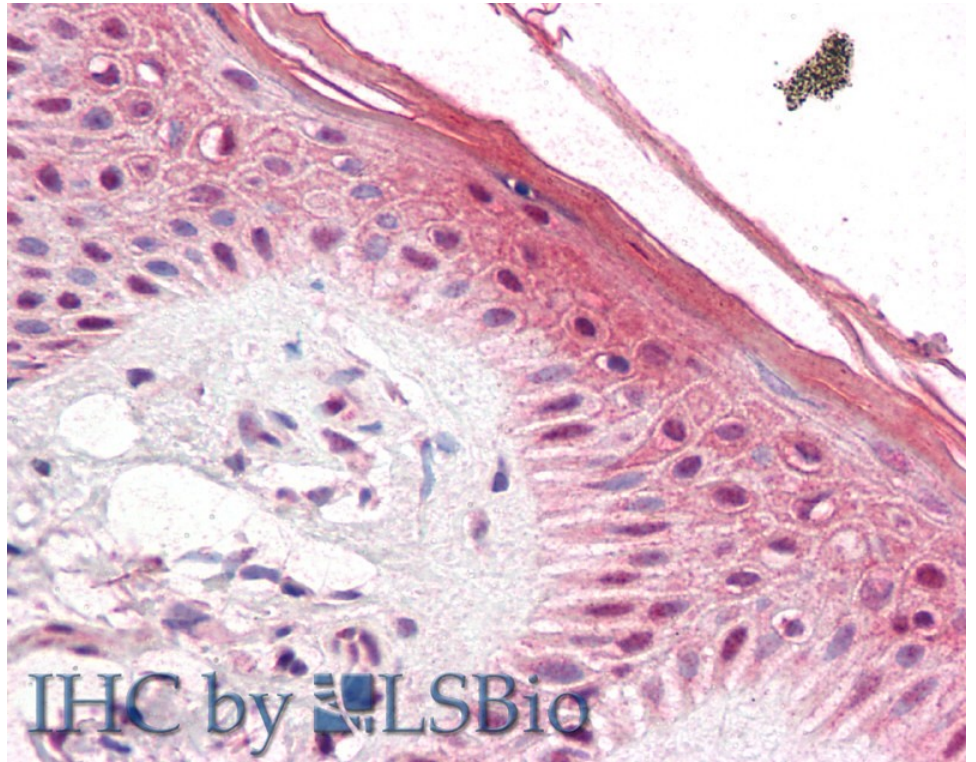
Expected from sequence similarity: Human, Mouse, Rat, Dog, Cow



EB05683 (0.1µg/ml) staining of HEK293 lysate (35µg protein in RIPA buffer). Detected by chemiluminescence.



EB05683 (5µg/ml) staining of paraffin embedded Human Prostate. Steamed antigen retrieval with citrate buffer pH 6, AP-staining.



EB05683 (5µg/ml) staining of paraffin embedded Human Skin. Steamed antigen retrieval with citrate buffer pH 6, AP-staining.