



## International Office

### Everest Biotech Ltd

Vector Laboratories, Inc.  
6737 Mowry Ave  
Newark, CA 94560  
United States

Customer Service:

[customerservice@vectorlabs.com](mailto:customerservice@vectorlabs.com)

Technical Service:

[technical@vectorlabs.com](mailto:technical@vectorlabs.com)

Tel: +1 (800) 227-6666

[www.everestbiotech.com](http://www.everestbiotech.com)

**Research Use Only. Not for  
diagnostic or therapeutic use.**

## EB11984 - Goat Anti-sialin / SLC17A5 (aa85-99) Antibody

Size: 100µg specific antibody in 200µl



### Target Protein

**Principal Names:** SLC17A5, solute carrier family 17 (anion/sugar transporter), member 5, AST, ISSD, NSD, SD, SIALIN, SIASD, SLD, membrane glycoprotein HP59, sialic acid storage disease, sialin, sodium/sialic acid cotransporter, solute carrier family 17 member 5, solute carrier family 17, member 5

**Official Symbol:** SLC17A5

**Accession Number(s):** NP\_036566.1

**Human GeneID(s):** [26503](#)

### Immunogen

Peptide with sequence C-EHSAPIKVHHNQTGK, from the internal region of the protein sequence according to NP\_036566.1.

Please note the [peptide](#) is available for sale.

### Purification and Storage

Purified from goat serum by ammonium sulphate precipitation followed by antigen affinity chromatography using the immunizing peptide.

Supplied at 0.5 mg/ml in Tris saline, 0.02% sodium azide, pH7.3 with 0.5% bovine serum albumin.

Aliquot and store at -20°C. Minimize freezing and thawing.

### Applications Tested

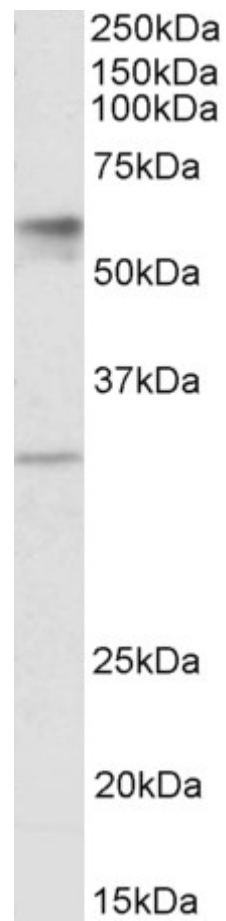
**Peptide ELISA:** antibody detection limit dilution 1:128000.

**Western blot:** Approx 55-60kDa band observed in Human Placenta lysates (calculated MW of 54.6kDa according to NP\_036566.1). The observed 30kDa is in agreement of isoform 2 reported by UniprotKB (Q9NRA2). Recommended concentration: 1-3µg/ml.

### Species Reactivity

**Tested:** Human

**Expected from sequence similarity:** Human



EB11984 (1µg/ml) staining of Human Placenta lysate (35µg protein in RIPA buffer). Primary incubation was 1 hour. Detected by chemiluminescence.