



## UK Office

### Everest Biotech Ltd

Cherwell Innovation Centre  
77 Heyford Park  
Upper Heyford  
Oxfordshire  
OX25 5HD  
UK

Enquiries:

[info@everestbiotech.com](mailto:info@everestbiotech.com)

Sales:

[sales@everestbiotech.com](mailto:sales@everestbiotech.com)

Tech support:

[support@everestbiotech.com](mailto:support@everestbiotech.com)

Tel: +44 (0)1869 238326

Fax: +44 (0)1869 238327

## US Office

### Everest Biotech c/o Abcore

405 Maple Street, Suite A106  
Ramona,  
CA 92065  
USA

Inquiries:

[info@everestbiotech.com](mailto:info@everestbiotech.com)

Sales:

[usasales@everestbiotech.com](mailto:usasales@everestbiotech.com)

Tech support:

[support@everestbiotech.com](mailto:support@everestbiotech.com)

Tel: 888-320-4628 (toll-free)

Fax: 888-841-9041

[www.everestbiotech.com](http://www.everestbiotech.com)

**Research Use Only. Not for  
diagnostic or therapeutic use.**

## EB07296 - Goat Anti-Silver homologue / Pmel 17 (C-terminus) Antibody

Size: 100µg specific antibody in 200µl



### Target Protein

**Principal Names:** silver homologue (mouse), PMEL17, SILV, D12S53E, ME20, SI, SIL, gp100, Melanocyte protein mel 17, Pmel 17, Silver, mouse, homologue of, silver (mouse homologue) like, silver (mouse homologue)-like, silver homologue

**Official Symbol:** PMEL

**Accession Number(s):** NP\_008859.1

**Human GeneID(s):** [6490](#)

**Non-Human GeneID(s):** 20431 (mouse), 362818 (rat)

### Immunogen

Peptide with sequence CPIGENSPLLSGQQ, from the C Terminus of the protein sequence according to NP\_008859.1.

Please note the [peptide](#) is available for sale.

### Purification and Storage

Purified from goat serum by ammonium sulphate precipitation followed by antigen affinity chromatography using the immunizing peptide.

Supplied at 0.5 mg/ml in Tris saline, 0.02% sodium azide, pH7.3 with 0.5% bovine serum albumin.

Aliquot and store at -20°C. Minimize freezing and thawing.

### Applications Tested

**Peptide ELISA:** antibody detection limit dilution 1:16000.

**Western blot:** Approx 70kDa band observed in Mouse Skin lysates (calculated MW of 66.3kDa according to Mouse NP\_068682.2). Recommended concentration: 1-3µg/ml. Primary incubation was 1 hour.

**Immunofluorescence:** Strong expression of the protein seen in the plasma membrane and cytoplasm of A431 cells. Recommended concentration: 10µg/ml.

### Species Reactivity

**Tested:** Human, Mouse

**Expected from sequence similarity:** Human, Mouse

### Specific Reference

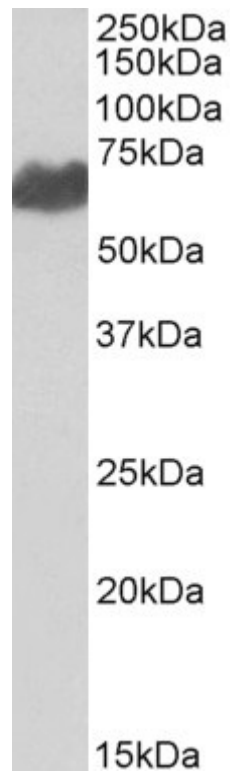
**This antibody (previous batch) has been successfully used in Western blot on Zebrafish:**

Liu C, Yan W, Zhou B, Guo Y, Liu H, Yu H, Giesy JP, Wang J, Li G, Zhang X.

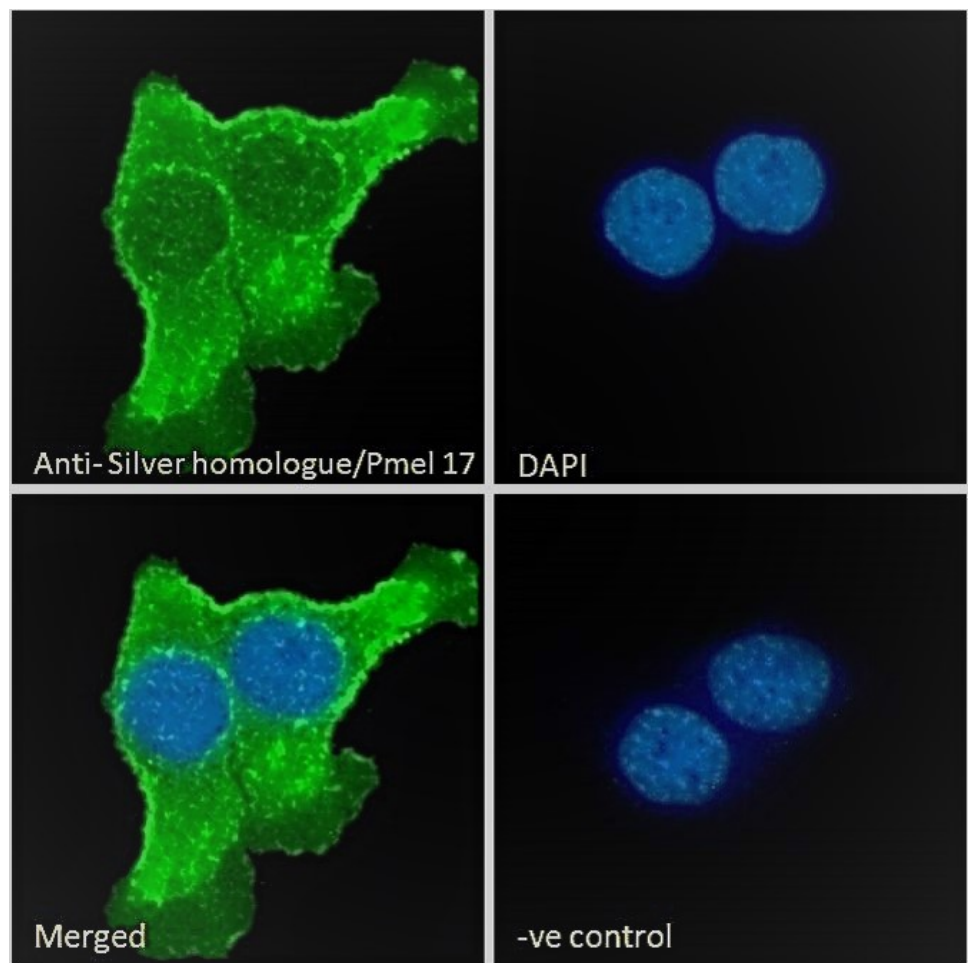
Characterization of a bystander effect induced by the endocrine-disrupting chemical 6-propyl-2-thiouracil in zebrafish embryos.

Aquat Toxicol. 2012 Aug 15;118-119:108-15.

PMID: 22542736



EB07296 (1 $\mu$ g/ml) staining of Mouse Skin lysate (35 $\mu$ g protein in RIPA buffer). Detected by chemiluminescence.



EB07296 Immunofluorescence analysis of paraformaldehyde fixed A431 cells, permeabilized with 0.15% Triton. Primary incubation 1hr (10 $\mu$ g/ml) followed by Alexa Fluor 488 secondary antibody (2 $\mu$ g/ml), showing membrane

and cytoplasmic staining. The nuclear stain is DAPI (blue). Negative control: Unimmunized goat IgG (10ug/ml) followed by Alexa Fluor 488 secondary antibody (2ug/ml).