



## UK Office

### Everest Biotech Ltd

Cherwell Innovation Centre  
77 Heyford Park  
Upper Heyford  
Oxfordshire  
OX25 5HD  
UK

Enquiries:

[info@everestbiotech.com](mailto:info@everestbiotech.com)

Sales:

[sales@everestbiotech.com](mailto:sales@everestbiotech.com)

Tech support:

[support@everestbiotech.com](mailto:support@everestbiotech.com)

Tel: +44 (0)1869 238326

Fax: +44 (0)1869 238327

## US Office

### Everest Biotech c/o Abcore

405 Maple Street, Suite A106  
Ramona,  
CA 92065  
USA

Inquiries:

[info@everestbiotech.com](mailto:info@everestbiotech.com)

Sales:

[usasales@everestbiotech.com](mailto:usasales@everestbiotech.com)

Tech support:

[support@everestbiotech.com](mailto:support@everestbiotech.com)

Tel: 888-320-4628 (toll-free)

Fax: 888-841-9041

[www.everestbiotech.com](http://www.everestbiotech.com)

**Research Use Only. Not for  
diagnostic or therapeutic use.**

## EB06973 - Goat Anti-SIRT3 Antibody

Size: 100µg specific antibody in 200µl



### Target Protein

**Principal Names:** SIRT3, sirtuin (silent mating type information regulation 2 homolog) 3 (S. cerevisiae), HGNC:14931, SIR2L3, mitochondrial nicotinamide adenine dinucleotide-dependent deacetylase, silent mating type information regulation 2, S.cerevisiae, homolog 3, sir2-like 3, sirtuin (silent mating type information regulation 2, S.cerevisiae, homolog) 3, sirtuin 3, sirtuin type 3

**Official Symbol:** SIRT3

**Accession Number(s):** NP\_036371.1, NP\_001017524.1

**Human GeneID(s):** [23410](#)

**Important Comments:** This antibody is expected to recognize both reported isoforms (NP\_036371.1 and NP\_001017524.1).

### Immunogen

Peptide with sequence C-QRETGKLDGDPK, from the C Terminus of the protein sequence according to NP\_036371.1, NP\_001017524.1.

Please note the [peptide](#) is available for sale.

### Purification and Storage

Purified from goat serum by ammonium sulphate precipitation followed by antigen affinity chromatography using the immunizing peptide.

Supplied at 0.5 mg/ml in Tris saline, 0.02% sodium azide, pH7.3 with 0.5% bovine serum albumin.

Aliquot and store at -20°C. Minimize freezing and thawing.

### Applications Tested

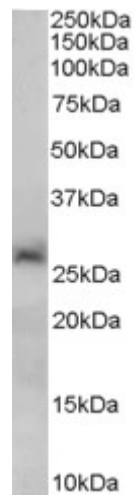
**Peptide ELISA:** antibody detection limit dilution 1:128000.

**Western blot:** Approx 28kDa band observed in Human Liver lysates (calculated MW of 28.6kDa according to NP\_001017524.1). Recommended concentration: 0.1-0.3µg/ml.

### Species Reactivity

**Tested:** Human

**Expected from sequence similarity:** Human



EB06973 (0.2 $\mu$ g/ml) staining of Human Liver lysate (35 $\mu$ g protein in RIPA buffer). Primary incubation was 1 hour.  
Detected by chemiluminescence.