

## International Office

### Everest Biotech Ltd

Vector Laboratories, Inc.  
6737 Mowry Ave  
Newark, CA 94560  
United States

Customer Service:

[customerservice@vectorlabs.com](mailto:customerservice@vectorlabs.com)

Technical Service:

[technical@vectorlabs.com](mailto:technical@vectorlabs.com)

Tel: +1 (800) 227-6666

[www.everestbiotech.com](http://www.everestbiotech.com)

**Research Use Only. Not for  
diagnostic or therapeutic use.**

## EB10970 - Goat Anti-Sirtuin 3 (mouse) Antibody

Size: 100µg specific antibody in 200µl



### Target Protein

**Principal Names:** Sirt3, sirtuin 3, sirtuin 3 (silent mating type information regulation 2, homolog) 3, 2310003L23Rik, AI848213, Sir2l3, NAD-dependent deacetylase sirtuin-3, OTTMUSP00000027441, OTTMUSP00000027444, OTTMUSP00000027445, SIR2-like protein 3

**Official Symbol:** Sirt3

**Accession Number(s):** NP\_071878.2; NP\_001171275.1

**Human GeneID(s):** [23410](#)

**Non-Human GeneID(s):** 64384 (mouse), 293615 (rat)

**Important Comments:** This antibody is expected to recognize both reported isoforms (NP\_071878.2; NP\_001171275.1). Reported variants represent identical proteins: NP\_071878.2; NP\_001120823.1

### Immunogen

Peptide with sequence C-RASGIPASKLVEAH, from the internal region of the protein sequence according to NP\_071878.2; NP\_001171275.1.

Please note the [peptide](#) is available for sale.

### Purification and Storage

Purified from goat serum by ammonium sulphate precipitation followed by antigen affinity chromatography using the immunizing peptide.

Supplied at 0.5 mg/ml in Tris saline, 0.02% sodium azide, pH7.3 with 0.5% bovine serum albumin.

Aliquot and store at -20°C. Minimize freezing and thawing.

### Applications Tested

**Peptide ELISA:** antibody detection limit dilution 1:64000.

**Western blot:** Approx 30kDa band observed in Mouse Heart lysates (calculated MW of 28.8kDa according to NP\_071878.2). An additional band of unknown identity was also consistently observed at 15kDa. This band was successfully blocked by incubation with the immunizing peptide. Recommended concentration: 1-3µg/ml. Primary incubation 1 hour at room temperature. Preliminary testing was unsuccessful on Rat Kidney for this particular batch.

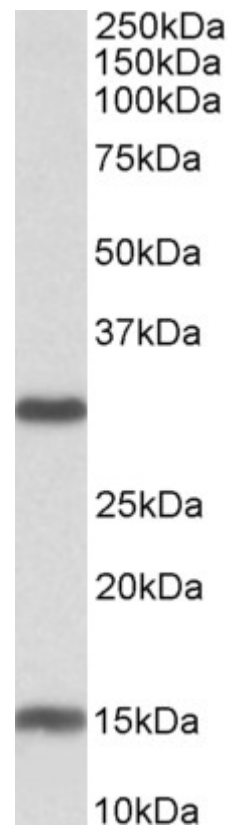
**Immunofluorescence:** Strong expression of the protein seen in the cytoplasm of NIH3T3 cells. Recommended concentration: 10µg/ml.

**Flow Cytometry:** Flow cytometric analysis of NIH3T3 cells. Recommended concentration: 10µg/ml.

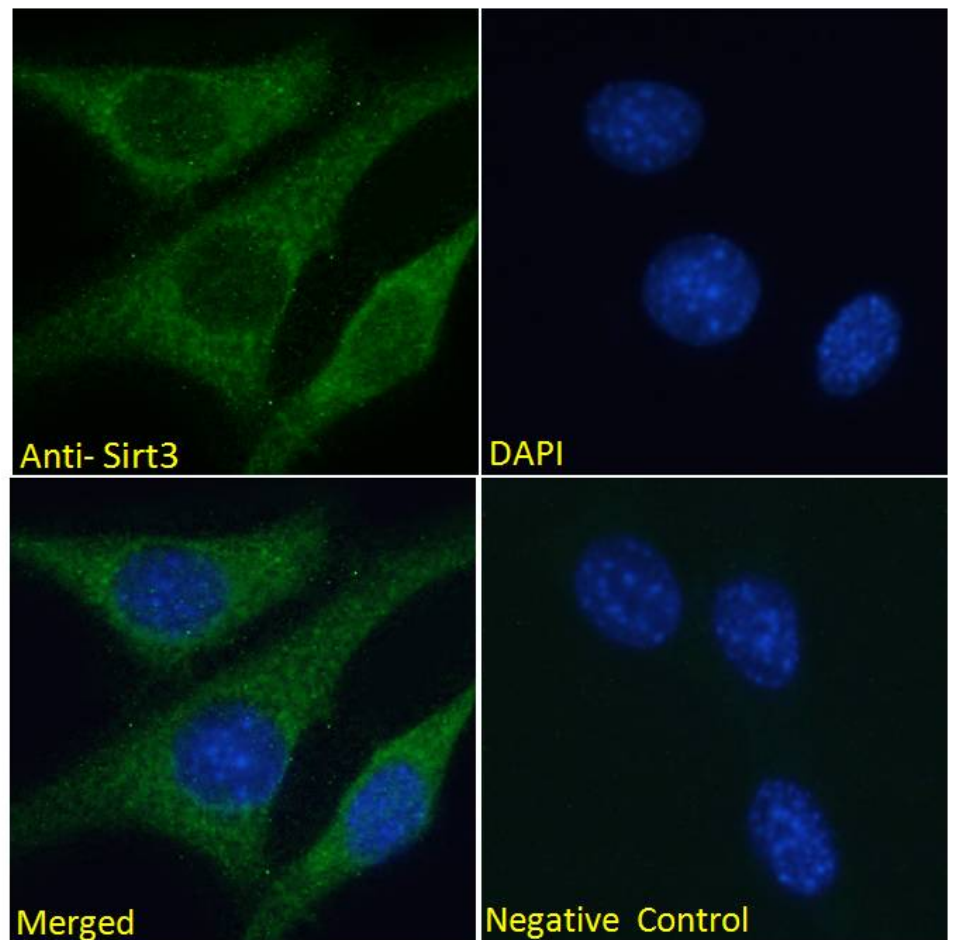
### Species Reactivity

**Tested:** Mouse

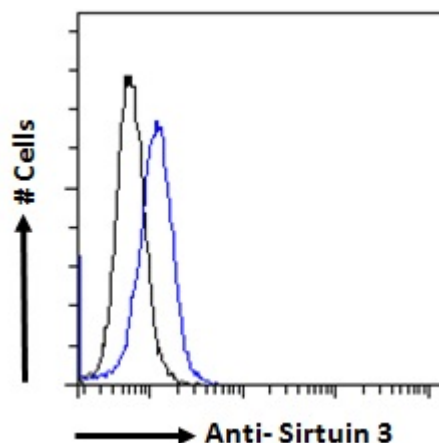
**Expected from sequence similarity:** Human, Mouse, Rat, Pig



EB10970 (0.3 $\mu$ g/ml) staining of Mouse Heart lysate (35 $\mu$ g protein in RIPA buffer). Detected by chemiluminescence.



EB10970 Immunofluorescence analysis of paraformaldehyde fixed NIH3T3 cells, permeabilized with 0.15% Triton. Primary incubation 1hr (10ug/ml) followed by Alexa Fluor 488 secondary antibody (2ug/ml), showing cytoplasmic staining. The nuclear stain is DAPI (blue). Negative control: Unimmunized goat IgG (10ug/ml) followed by Alexa Fluor 488 secondary antibody (2ug/ml).



EB10970 Flow cytometric analysis of paraformaldehyde fixed NIH3T3 cells (blue line), permeabilized with 0.5% Triton, showing a low level of staining. Primary incubation 1hr (10ug/ml) followed by Alexa Fluor 488 secondary antibody (1ug/ml). IgG control: Unimmunized goat IgG (black line) followed by Alexa Fluor 488 secondary antibody.