



UK Office

Everest Biotech Ltd

Cherwell Innovation Centre
77 Heyford Park
Upper Heyford
Oxfordshire
OX25 5HD
UK

Enquiries:

info@everestbiotech.com

Sales:

sales@everestbiotech.com

Tech support:

support@everestbiotech.com

Tel: +44 (0)1869 238326

Fax: +44 (0)1869 238327

US Office

Everest Biotech c/o Abcore

405 Maple Street, Suite A106
Ramona,
CA 92065
USA

Inquiries:

info@everestbiotech.com

Sales:

usasales@everestbiotech.com

Tech support:

support@everestbiotech.com

Tel: 888-320-4628 (toll-free)

Fax: 888-841-9041

www.everestbiotech.com

**Research Use Only. Not for
diagnostic or therapeutic use.**

EB10970 - Goat Anti-Sirtuin 3 (mouse) Antibody

Size: 100µg specific antibody in 200µl



Target Protein

Principal Names: Sirt3, sirtuin 3, sirtuin 3 (silent mating type information regulation 2, homolog) 3, 2310003L23Rik, AI848213, Sir2l3, NAD-dependent deacetylase sirtuin-3, OTTMUSP00000027441, OTTMUSP00000027444, OTTMUSP00000027445, SIR2-like protein 3

Official Symbol: Sirt3

Accession Number(s): NP_071878.2; NP_001171275.1

Human GeneID(s): [23410](#)

Non-Human GeneID(s): 64384 (mouse), 293615 (rat)

Important Comments: This antibody is expected to recognize both reported isoforms (NP_071878.2; NP_001171275.1). Reported variants represent identical proteins: NP_071878.2; NP_001120823.1

Immunogen

Peptide with sequence C-RASGIPASKLVEAH, from the internal region of the protein sequence according to NP_071878.2; NP_001171275.1.

Please note the [peptide](#) is available for sale.

Purification and Storage

Purified from goat serum by ammonium sulphate precipitation followed by antigen affinity chromatography using the immunizing peptide.

Supplied at 0.5 mg/ml in Tris saline, 0.02% sodium azide, pH7.3 with 0.5% bovine serum albumin.

Aliquot and store at -20°C. Minimize freezing and thawing.

Applications Tested

Peptide ELISA: antibody detection limit dilution 1:64000.

Western blot: Approx 30kDa band observed in Mouse Heart lysates (calculated MW of 28.8kDa according to NP_071878.2). An additional band of unknown identity was also consistently observed at 15kDa. This band was successfully blocked by incubation with the immunizing peptide. Recommended concentration: 1-3µg/ml. Primary incubation 1 hour at room temperature. Preliminary testing was unsuccessful on Rat Kidney for this particular batch.

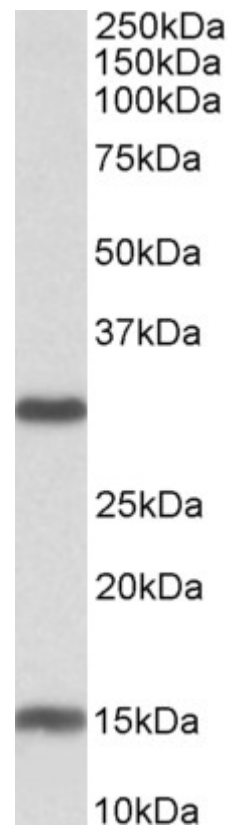
Immunofluorescence: Strong expression of the protein seen in the cytoplasm of NIH3T3 cells. Recommended concentration: 10µg/ml.

Flow Cytometry: Flow cytometric analysis of NIH3T3 cells. Recommended concentration: 10µg/ml.

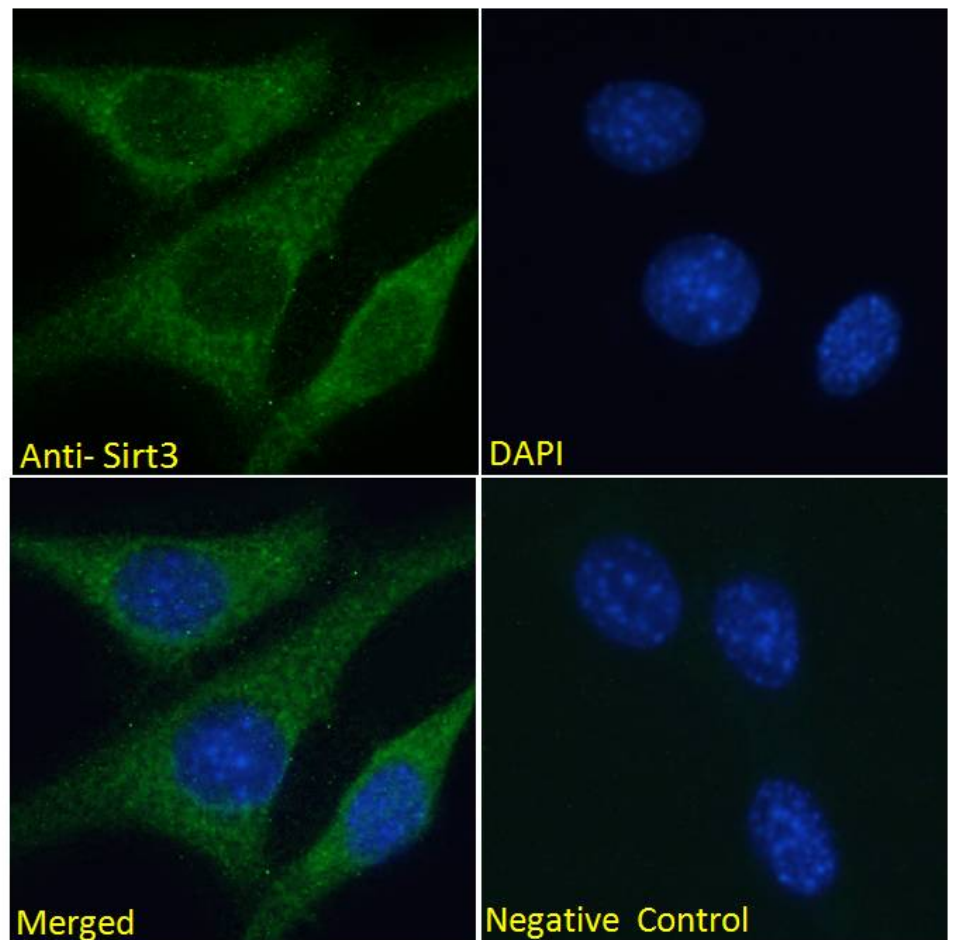
Species Reactivity

Tested: Mouse

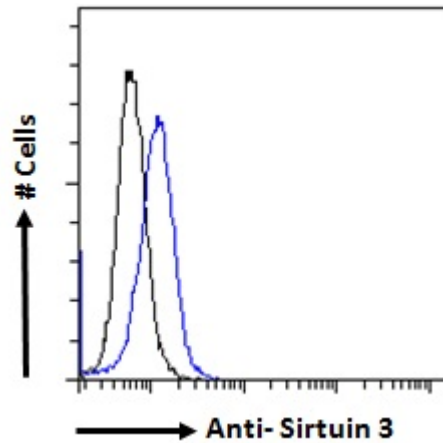
Expected from sequence similarity: Human, Mouse, Rat, Pig



EB10970 (0.3 μ g/ml) staining of Mouse Heart lysate (35 μ g protein in RIPA buffer). Detected by chemiluminescence.



EB10970 Immunofluorescence analysis of paraformaldehyde fixed NIH3T3 cells, permeabilized with 0.15% Triton. Primary incubation 1hr (10ug/ml) followed by Alexa Fluor 488 secondary antibody (2ug/ml), showing cytoplasmic staining. The nuclear stain is DAPI (blue). Negative control: Unimmunized goat IgG (10ug/ml) followed by Alexa Fluor 488 secondary antibody (2ug/ml).



EB10970 Flow cytometric analysis of paraformaldehyde fixed NIH3T3 cells (blue line), permeabilized with 0.5% Triton, showing a low level of staining. Primary incubation 1hr (10ug/ml) followed by Alexa Fluor 488 secondary antibody (1ug/ml). IgG control: Unimmunized goat IgG (black line) followed by Alexa Fluor 488 secondary antibody.