



International Office

Everest Biotech Ltd

Vector Laboratories, Inc.
6737 Mowry Ave
Newark, CA 94560
United States

Customer Service:

customerservice@vectorlabs.com

Technical Service:

technical@vectorlabs.com

Tel: +1 (800) 227-6666

www.everestbiotech.com

**Research Use Only. Not for
diagnostic or therapeutic use.**

EB09603 - Goat Anti-SKA3 Antibody

Size: 100µg specific antibody in 200µl



Target Protein

Principal Names: C13orf3, chromosome 13 open reading frame 3, MGC4832, RAMA1, SKA3

Official Symbol: C13orf3

Accession Number(s): NP_659498.3

Human GeneID(s): [221150](#)

Non-Human GeneID(s): 219114 (mouse), 361047 (rat)

Immunogen

Peptide with sequence C-PLSKTNSSSNDLE, from the internal region of the protein sequence according to NP_659498.3.

Please note the [peptide](#) is available for sale.

Purification and Storage

Purified from goat serum by ammonium sulphate precipitation followed by antigen affinity chromatography using the immunizing peptide.

Supplied at 0.5 mg/ml in Tris saline, 0.02% sodium azide, pH7.3 with 0.5% bovine serum albumin.

Aliquot and store at -20°C. Minimize freezing and thawing.

Applications Tested

Peptide ELISA: antibody detection limit dilution 1:64000.

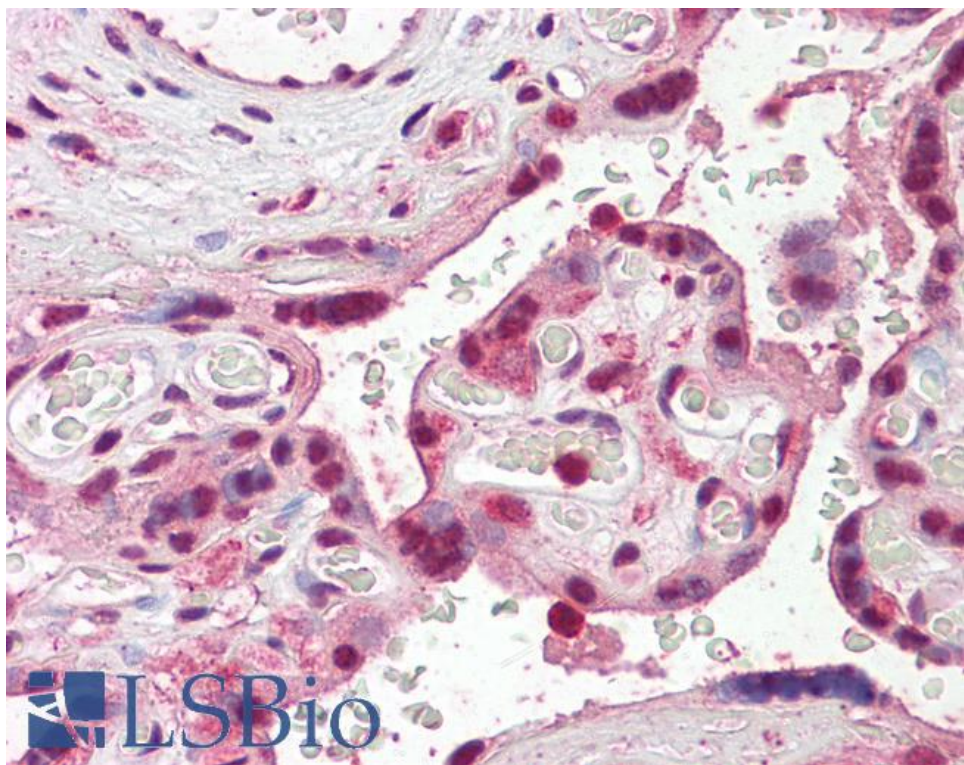
Western blot: Preliminary experiments gave an approx 35kDa and 150kDa band in HeLa lysates after 2µg/ml antibody staining. Please note that currently we cannot find an explanation in the literature for the bands we observe given the calculated size of 46.4kDa according to NP_659498.3. Both bands were successfully blocked by incubation with the immunizing peptide.

IHC: Paraffin embedded Human Placenta. Recommended concentration: 3.75µg/ml.

Species Reactivity

Tested: Human

Expected from sequence similarity: Human, Mouse, Rat, Dog



EB09603 (3.75µg/ml) staining of paraffin embedded Human Placenta. Steamed antigen retrieval with citrate buffer pH 6, AP-staining.