



UK Office

Everest Biotech Ltd

Cherwell Innovation Centre
77 Heyford Park
Upper Heyford
Oxfordshire
OX25 5HD
UK

Enquiries:

info@everestbiotech.com

Sales:

sales@everestbiotech.com

Tech support:

support@everestbiotech.com

Tel: +44 (0)1869 238326

www.everestbiotech.com

**Research Use Only. Not for
diagnostic or therapeutic use.**

EB10496 - Goat Anti-SLAMF8 Antibody

Size: 100µg specific antibody in 200µl



Target Protein

Principal Names: B lymphocyte activator macrophage expressed, BCM-like membrane protein, BLAME, FLJ20442, MGC129578, SBBI42, SLAM family member 8, SLAMF8

Official Symbol: SLAMF8

Accession Number(s): NP_064510.1

Human GeneID(s): [56833](#)

Immunogen

Peptide with sequence C-HADRVGPETENP, from the C Terminus of the protein sequence according to NP_064510.1.

Please note the [peptide](#) is available for sale.

Purification and Storage

Purified from goat serum by ammonium sulphate precipitation followed by antigen affinity chromatography using the immunizing peptide.

Supplied at 0.5 mg/ml in Tris saline, 0.02% sodium azide, pH7.3 with 0.5% bovine serum albumin.

Aliquot and store at -20°C. Minimize freezing and thawing.

Applications Tested

Peptide ELISA: antibody detection limit dilution 1:32000.

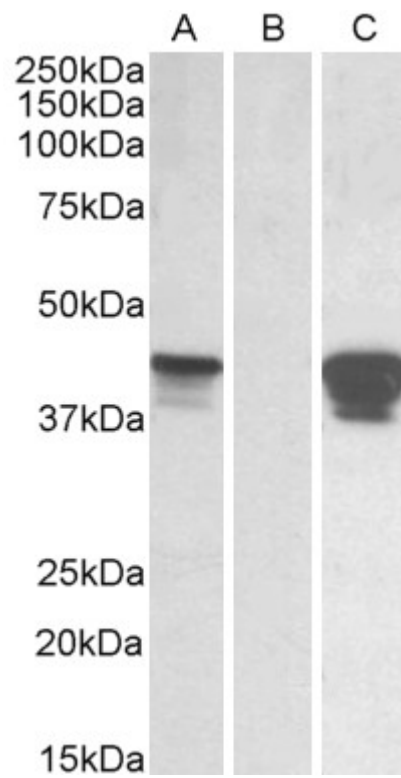
Western blot: In transfected HEK293 transiently expressing Human SLAMF8 a band of approx. 45kDa is observed. This band is not observed in the non-transfected HEK293. The calculated molecular size is 31.7kDa according to NP_064510.1. Recommended concentration, 0.01-0.03µg/ml.

IHC: Paraffin embedded Human Small Intestine. Recommended concentration: 5µg/ml.

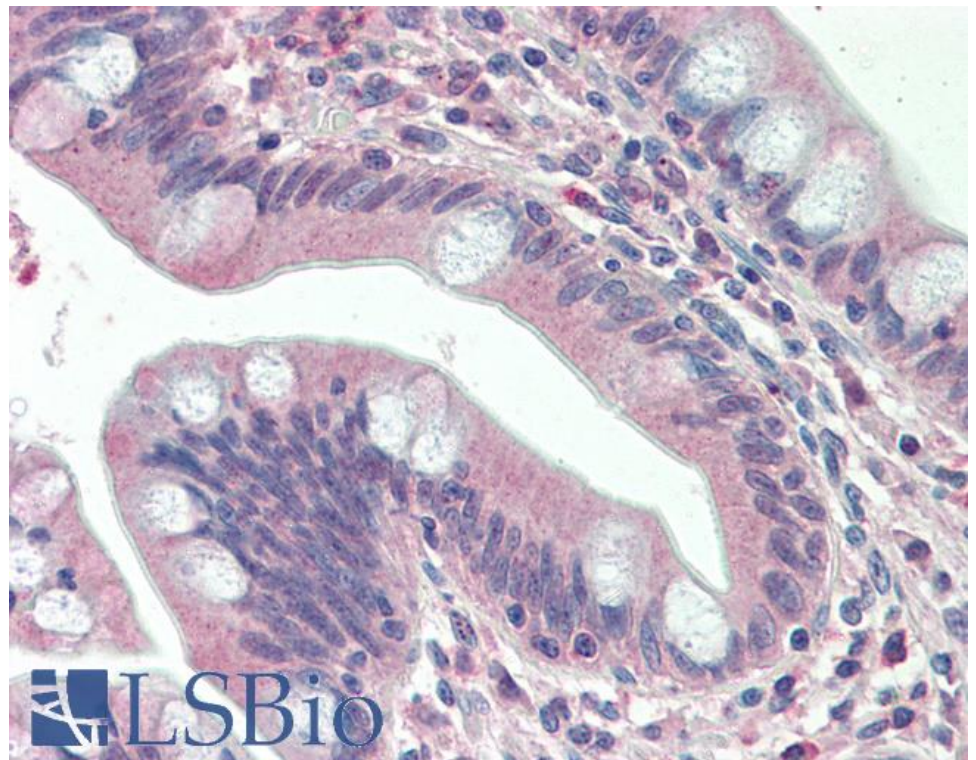
Species Reactivity

Tested: Human

Expected from sequence similarity: Human



HEK293 lysate (10ug protein in RIPA buffer) overexpressing Human SLAMF8 with C-terminal MYC tag probed with EB10496 (0.01ug/ml) in Lane A and probed with anti-MYC Tag (1/1000) in lane C. Mock-transfected HEK293 probed with EB10496 (0.01ug/ml) in Lane B. Primary incubations were for 1 hour. Detected by chemiluminescence.



EB10496 (5µg/ml) staining of paraffin embedded Human Small Intestine. Steamed antigen retrieval with citrate buffer pH 6, AP-staining.