



UK Office

Everest Biotech Ltd

Cherwell Innovation Centre
77 Heyford Park
Upper Heyford
Oxfordshire
OX25 5HD
UK

Enquiries:

info@everestbiotech.com

Sales:

sales@everestbiotech.com

Tech support:

support@everestbiotech.com

Tel: +44 (0)1869 238326

Fax: +44 (0)1869 238327

US Office

Everest Biotech c/o Abcore

405 Maple Street, Suite A106
Ramona,
CA 92065
USA

Inquiries:

info@everestbiotech.com

Sales:

usasales@everestbiotech.com

Tech support:

support@everestbiotech.com

Tel: 888-320-4628 (toll-free)

Fax: 888-841-9041

www.everestbiotech.com

**Research Use Only. Not for
diagnostic or therapeutic use.**

EB08818 - Goat Anti-SLC10A2 / ASBT Antibody

Size: 100µg specific antibody in 200µl



Target Protein

Principal Names: SLC10A2, ASBT, solute carrier family 10 (sodium/bile acid cotransporter family), member 2, ISBT, NTCP2, OTTHUMP00000040691, ileal apical sodium-dependent bile acid transporter, ileal sodium-dependent bile acid transporter

Official Symbol: SLC10A2

Accession Number(s): NP_000443.1

Human GeneID(s): [6555](#)

Immunogen

Peptide with sequence C-YKANGGFQPD EK, from the C Terminus of the protein sequence according to NP_000443.1.

Please note the [peptide](#) is available for sale.

Purification and Storage

Purified from goat serum by ammonium sulphate precipitation followed by antigen affinity chromatography using the immunizing peptide.

Supplied at 0.5 mg/ml in Tris saline, 0.02% sodium azide, pH7.3 with 0.5% bovine serum albumin.

Aliquot and store at -20°C. Minimize freezing and thawing.

Applications Tested

Peptide ELISA: antibody detection limit dilution 1:16000.

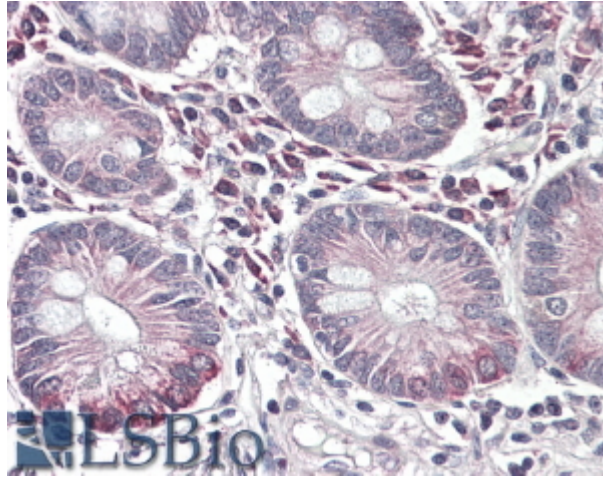
Western blot: Preliminary experiments gave an approx. 60kDa band in Human Kidney lysates after 0.1µg/ml antibody staining. Please note that currently we cannot find an explanation in the literature for the band we observe given the calculated size of 37.7kDa according to NP_000443.1. The 60kDa band was successfully blocked by incubation with the immunizing peptide.

IHC: In paraffin embedded Human Small Intestine shows staining of cells in the lamina propria between the intestinal villi. Recommended concentration: 3-6µg/ml.

Species Reactivity

Tested: Human

Expected from sequence similarity: Human



EB08818 (3.75µg/ml) staining of paraffin embedded Human Small Intestine. Steamed antigen retrieval with citrate buffer Ph 6, AP-staining.