

## UK Office

### Everest Biotech Ltd

Cherwell Innovation Centre  
77 Heyford Park  
Upper Heyford  
Oxfordshire  
OX25 5HD  
UK

Enquiries:

[info@everestbiotech.com](mailto:info@everestbiotech.com)

Sales:

[sales@everestbiotech.com](mailto:sales@everestbiotech.com)

Tech support:

[support@everestbiotech.com](mailto:support@everestbiotech.com)

Tel: +44 (0)1869 238326

[www.everestbiotech.com](http://www.everestbiotech.com)

**Research Use Only. Not for  
diagnostic or therapeutic use.**

## EB08819 - Goat Anti-Slc10a2 (mouse) Antibody

Size: 100µg specific antibody in 200µl



### Target Protein

**Principal Names:** Slc10a2, solute carrier family 10 (sodium/bile acid cotransporter family), member 2, ASBT, ISBT, ileal apical sodium-dependent bile acid transporter, ileal sodium-dependent bile acid transporter, solute carrier family 10, member 2

**Official Symbol:** Slc10a2

**Accession Number(s):** NP\_035518.1

**Non-Human GeneID(s):** 20494 (mouse), 29500 (rat)

### Immunogen

Peptide with sequence C-DETNRKGFQPDKEK, from the C Terminus of the protein sequence according to NP\_035518.1.

Please note the [peptide](#) is available for sale.

### Purification and Storage

Purified from goat serum by ammonium sulphate precipitation followed by antigen affinity chromatography using the immunizing peptide.

Supplied at 0.5 mg/ml in Tris saline, 0.02% sodium azide, pH7.3 with 0.5% bovine serum albumin.

Aliquot and store at -20°C. Minimize freezing and thawing.

### Applications Tested

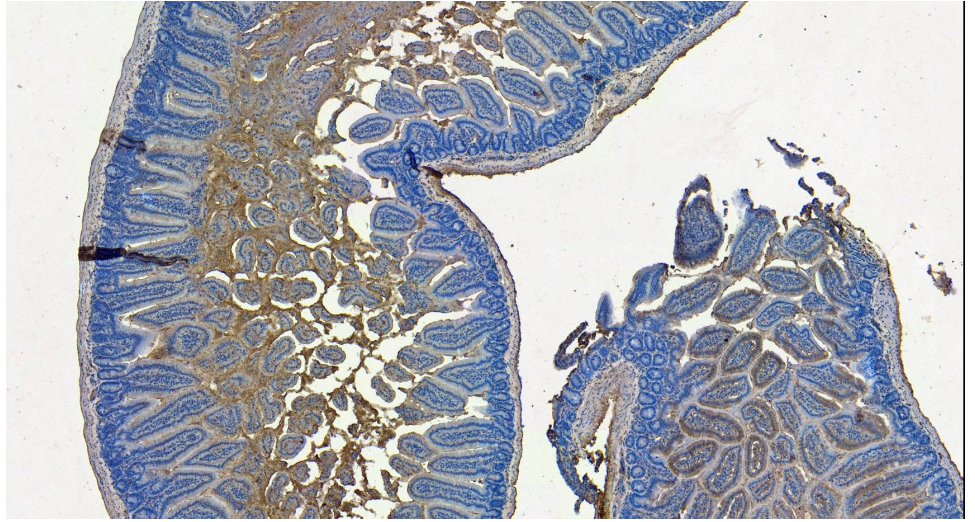
**Peptide ELISA:** antibody detection limit dilution 1:4000.

**IHC:** Paraffin embedded Mouse Small Intestine. Recommended concentration: 6-8µg/ml.

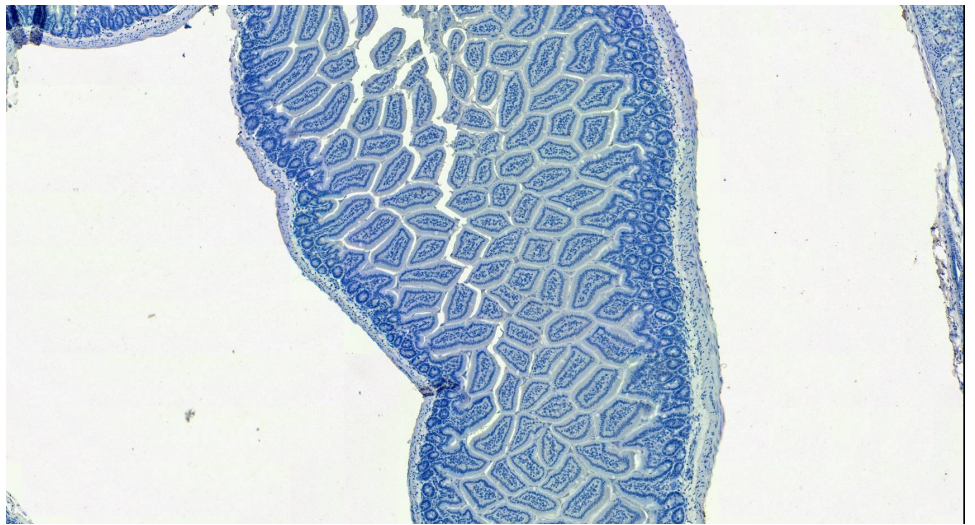
### Species Reactivity

**Tested:** Mouse

**Expected from sequence similarity:** Mouse



EB08819 (6µg/ml) staining of paraffin embedded Mouse Small Intestine. Heat induced antigen retrieval with citrate buffer pH 6, HRP-staining.



EB08819 Negative Control showing staining of paraffin embedded Mouse Small Intestine, with no primary antibody.