



UK Office

Everest Biotech Ltd

Cherwell Innovation Centre
77 Heyford Park
Upper Heyford
Oxfordshire
OX25 5HD
UK

Enquiries:

info@everestbiotech.com

Sales:

sales@everestbiotech.com

Tech support:

support@everestbiotech.com

Tel: +44 (0)1869 238326

Fax: +44 (0)1869 238327

US Office

Everest Biotech c/o Abcore

405 Maple Street, Suite A106
Ramona,
CA 92065
USA

Inquiries:

info@everestbiotech.com

Sales:

usasales@everestbiotech.com

Tech support:

support@everestbiotech.com

Tel: 888-320-4628 (toll-free)

Fax: 888-841-9041

www.everestbiotech.com

**Research Use Only. Not for
diagnostic or therapeutic use.**

EB09143 - Goat Anti-SLC12A1 / NKCC Antibody

Size: 100µg specific antibody in 200µl



Target Protein

Principal Names: SLC12A1, solute carrier family 12 (sodium/potassium/chloride transporters), member 1, BSC1, MGC48843, NKCC2, NKCC2A variant A, Na-K-2Cl cotransporter, sodium potassium chloride cotransporter 2

Official Symbol: SLC12A1

Accession Number(s): NP_000329.2

Human GeneID(s): [6557](#)

Immunogen

Peptide with sequence C-PHYEETSFGDEAQKR, from the internal region of the protein sequence according to NP_000329.2.

Please note the [peptide](#) is available for sale.

Purification and Storage

Purified from goat serum by ammonium sulphate precipitation followed by antigen affinity chromatography using the immunizing peptide.

Supplied at 0.5 mg/ml in Tris saline, 0.02% sodium azide, pH7.3 with 0.5% bovine serum albumin.

Aliquot and store at -20°C. Minimize freezing and thawing.

Applications Tested

Peptide ELISA: antibody detection limit dilution 1:32000.

Western blot: This antibody has been successfully used in WB on Mouse: Alshahrani S et al. (2015) PMID: 26400961.

IHC: In paraffin embedded Human Kidney shows strong membrane staining in some CT cells. Recommended concentration, 3-6µg/ml.

IF/ICC: This antibody has been successfully used in IF on Mouse: Alshahrani S et al. (2015) PMID: 26400961. This antibody has been successfully used in ICC on Pig: Andreas Brännström et al. (2022) PMID: 36471055.

Species Reactivity

Tested: Human, Mouse, Pig

Expected from sequence similarity: Human

Specific References

This antibody has been successfully used in ICC on Pig:

Andreas Brännström, Michael Hultström, Jenny Gustavsson, Zabih Aurfan & Mattias Günther

Intermittent thoracic resuscitative endovascular balloon occlusion of the aorta improves renal function compared to 60 min continuous application after porcine class III hemorrhage.

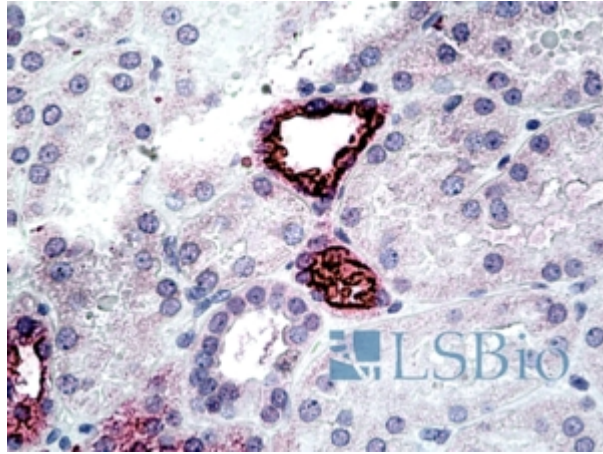
Eur J Trauma Emerg Surg (2022). <https://doi.org/10.1007/s00068-022-02189-2>
PMID: 36471055

This antibody has been successfully used in WB and IF in Mouse:

Alshahrani S, Almutairi MM, Kursan S, Dias-Junior E, Almiahub MM, Aguilar-Bryan L, Di Fulvio M.

Increased Slc12a1 expression in β -cells
and improved glucose disposal in Slc12a2 heterozygous mice.

J Endocrinol. 2015 Dec;227(3):153-65.
PMID: 26400961



EB09143 (3.8ug/ml) staining of paraffin embedded Human Kidney. Steamed antigen retrieval with citrate buffer pH 6, AP-staining.