



## UK Office

### Everest Biotech Ltd

Cherwell Innovation Centre  
77 Heyford Park  
Upper Heyford  
Oxfordshire  
OX25 5HD  
UK

Enquiries:

[info@everestbiotech.com](mailto:info@everestbiotech.com)

Sales:

[sales@everestbiotech.com](mailto:sales@everestbiotech.com)

Tech support:

[support@everestbiotech.com](mailto:support@everestbiotech.com)

Tel: +44 (0)1869 238326

Fax: +44 (0)1869 238327

## US Office

### Everest Biotech c/o Abcore

405 Maple Street, Suite A106  
Ramona,  
CA 92065  
USA

Inquiries:

[info@everestbiotech.com](mailto:info@everestbiotech.com)

Sales:

[usasales@everestbiotech.com](mailto:usasales@everestbiotech.com)

Tech support:

[support@everestbiotech.com](mailto:support@everestbiotech.com)

Tel: 888-320-4628 (toll-free)

Fax: 888-841-9041

[www.everestbiotech.com](http://www.everestbiotech.com)

**Research Use Only. Not for  
diagnostic or therapeutic use.**

## EB09783 - Goat Anti-SLC12A2 Antibody

Size: 100µg specific antibody in 200µl



### Target Protein

**Principal Names:** basolateral Na-K-Cl symporter, BSC, BSC2, bumetanide-sensitive sodium-(potassium)-chloride cotransporter 1, MGC104233, NKCC1, solute carrier family 12 (sodium/potassium/chloride transporters), member 2, SLC12A2

**Official Symbol:** SLC12A2

**Accession Number(s):** NP\_001037.1; NP\_001243390.1

**Human GeneID(s):** [6558](#)

**Non-Human GeneID(s):** 20496 (mouse), 83629 (rat)

### Immunogen

Peptide with sequence C-NALQHSIRLSGVEDH, from the internal region of the protein sequence according to NP\_001037.1; NP\_001243390.1.

Please note the [peptide](#) is available for sale.

### Purification and Storage

Purified from goat serum by ammonium sulphate precipitation followed by antigen affinity chromatography using the immunizing peptide.

Supplied at 0.5 mg/ml in Tris saline, 0.02% sodium azide, pH7.3 with 0.5% bovine serum albumin.

Aliquot and store at -20°C. Minimize freezing and thawing.

### Applications Tested

**Peptide ELISA:** antibody detection limit dilution 1:64000.

**IHC:** In paraffin embedded Human Colon shows membranous staining. Recommended concentration: 3.75µg/ml.

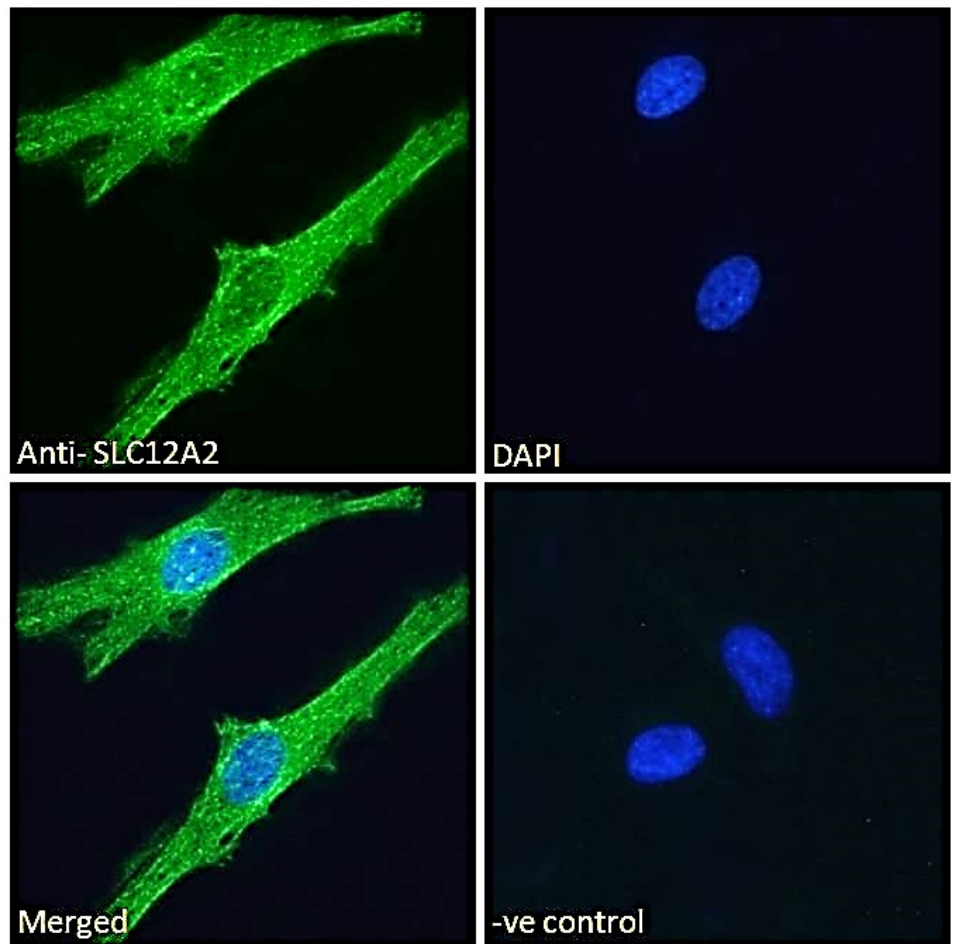
**Immunofluorescence:** Strong expression of the protein seen in the cytoplasm/ vesicles of HeLa cells. Recommended concentration: 10µg/ml.

**Flow Cytometry:** Flow cytometric analysis of HeLa cells. Recommended concentration: 10ug/ml.

### Species Reactivity

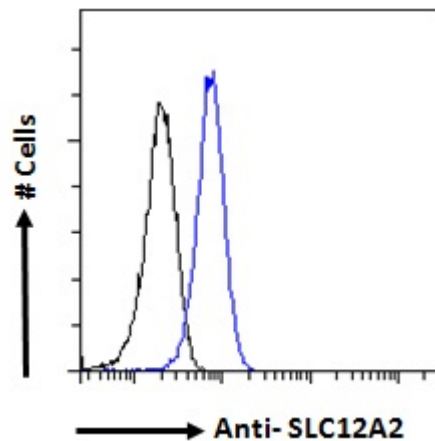
**Tested:** Human

**Expected from sequence similarity:** Human, Mouse, Rat, Dog, Cow

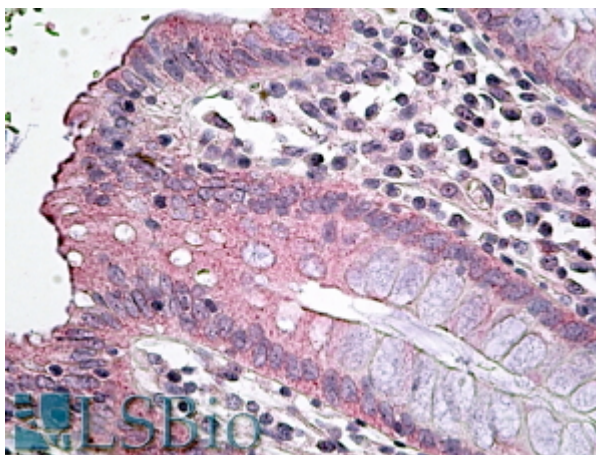


EB09783 Immunofluorescence analysis of paraformaldehyde fixed HeLa cells, permeabilized with 0.15% Triton.

Primary incubation 1hr (10ug/ml) followed by Alexa Fluor 488 secondary antibody (2ug/ml), showing cytoplasmic/vesicle and membrane staining. The nuclear stain is DAPI (blue). Negative control: Unimmunized goat IgG (10ug/ml) followed by Alexa Fluor 488 secondary antibody (2ug/ml).



EB09783 Flow cytometric analysis of paraformaldehyde fixed HeLa cells (blue line), permeabilized with 0.5% Triton. Primary incubation 1hr (10ug/ml) followed by Alexa Fluor 488 secondary antibody (1ug/ml). IgG control: Unimmunized goat IgG (black line) followed by Alexa Fluor 488 secondary antibody.



EB09783 (3.75µg/ml) staining of paraffin embedded Human Colon. Steamed antigen retrieval with citrate buffer Ph 6, AP-staining.