

UK Office

Everest Biotech Ltd

Cherwell Innovation Centre
77 Heyford Park
Upper Heyford
Oxfordshire
OX25 5HD
UK

Enquiries:

info@everestbiotech.com

Sales:

sales@everestbiotech.com

Tech support:

support@everestbiotech.com

Tel: +44 (0)1869 238326

www.everestbiotech.com

**Research Use Only. Not for
diagnostic or therapeutic use.**

EB08816 - Goat Anti-SLC22A17 Antibody

Size: 100µg specific antibody in 200µl



Target Protein

Principal Names: SLC22A17, solute carrier family 22, member 17, BOCT, BOIT, NGALR, hBOIT, NGAL receptor, neutrophil gelatinase-associated lipocalin receptor, potent brain type organic ion transporter, solute carrier family 22 (organic cation transporter), member 17

Official Symbol: SLC22A17

Accession Number(s): NP_065105.2; NP_057693.3

Human GeneID(s): [51310](#)

Non-Human GeneID(s): 59049 (mouse), 305886 (rat)

Important Comments: This antibody is expected to recognize both reported isoforms NP_065105.2 and NP_057693.3).

Immunogen

Peptide with sequence C-PETKRKLLPEVLRD, from the internal region of the protein sequence according to NP_065105.2; NP_057693.3.

Please note the [peptide](#) is available for sale.

Purification and Storage

Purified from goat serum by ammonium sulphate precipitation followed by antigen affinity chromatography using the immunizing peptide.

Supplied at 0.5 mg/ml in Tris saline, 0.02% sodium azide, pH7.3 with 0.5% bovine serum albumin.

Aliquot and store at -20°C. Minimize freezing and thawing.

Applications Tested

Peptide ELISA: antibody detection limit dilution 1:64000.

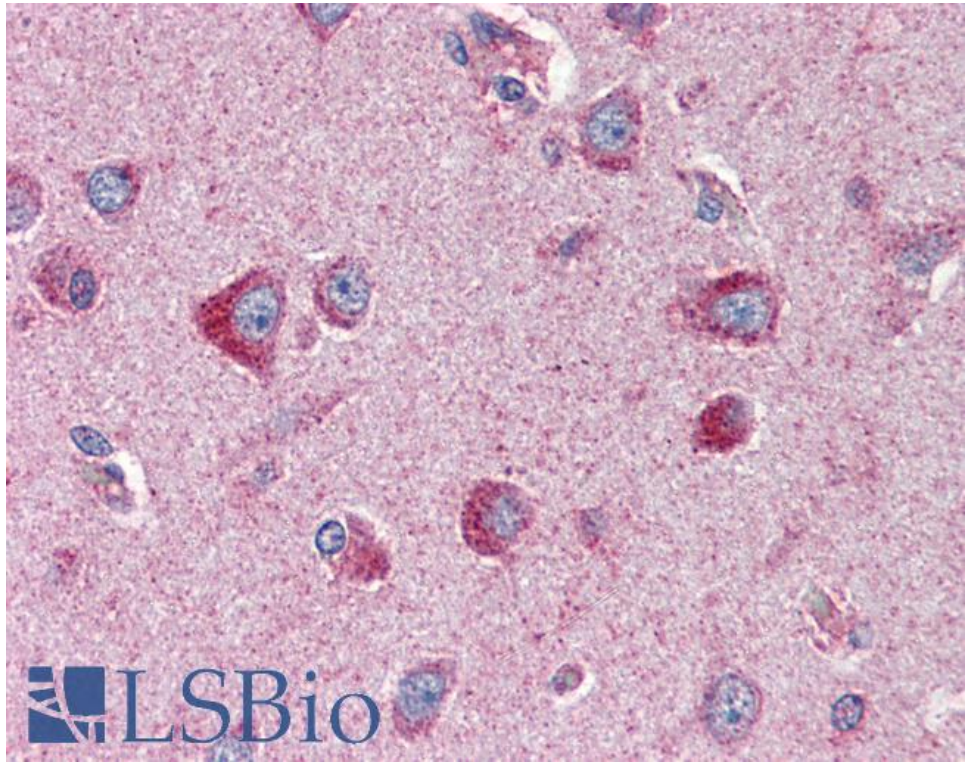
Western blot: Preliminary experiments gave an approx 150kDa band in Human Cerebellum lysates after 0.1µg/ml antibody staining. Please note that currently we cannot find an explanation in the literature for the band we observe given the calculated size of 57.7kDa according to NP_065105.2. The 150kDa band was successfully blocked by incubation with the immunizing peptide.

IHC: Paraffin embedded Human Brain (Cortex and Cerebellum). Recommended concentration: 2µg/ml.

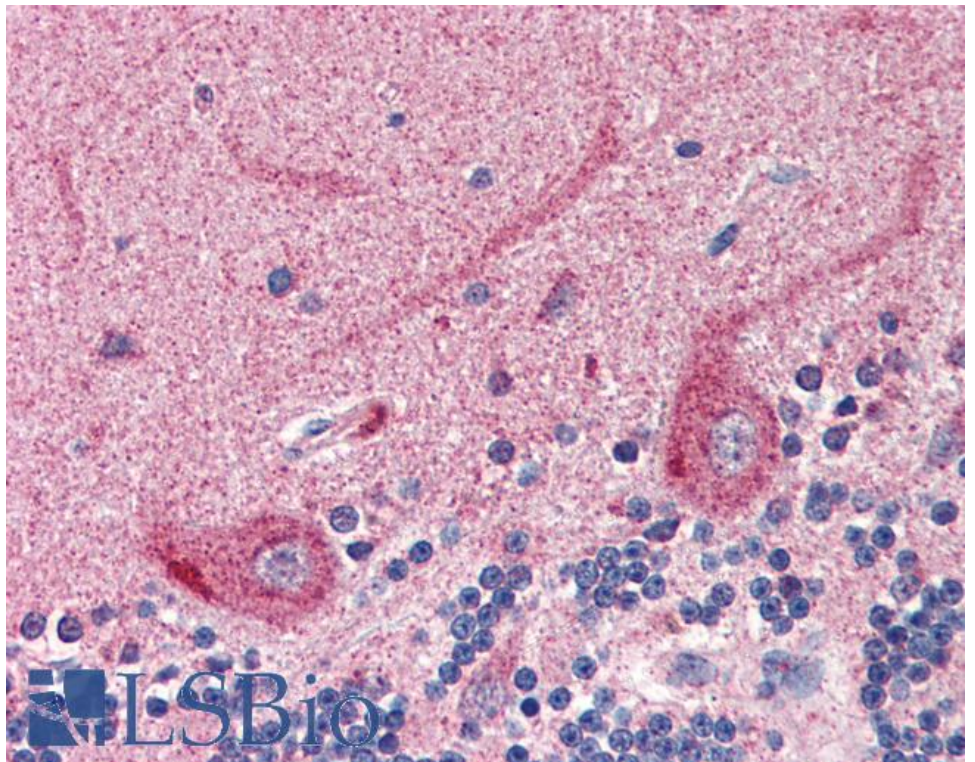
Species Reactivity

Tested: Human

Expected from sequence similarity: Human, Mouse, Rat, Dog, Cow



EB08816 (2µg/ml) staining of paraffin embedded Human Cortex. Steamed antigen retrieval with citrate buffer pH 6, AP-staining.



EB08816 (2µg/ml) staining of paraffin embedded Human Cerebellum. Steamed antigen retrieval with citrate buffer pH 6, AP-staining.