



International Office

Everest Biotech Ltd

Vector Laboratories, Inc.
6737 Mowry Ave
Newark, CA 94560
United States

Customer Service:

customerservice@vectorlabs.com

Technical Service:

technical@vectorlabs.com

Tel: +1 (800) 227-6666

www.everestbiotech.com

**Research Use Only. Not for
diagnostic or therapeutic use.**

EB12127 - Goat Anti-SLC26A1 / SAT-1 Antibody

Size: 100µg specific antibody in 200µl



Target Protein

Principal Names: SLC26A1, solute carrier family 26 (sulfate transporter), member 1, EDM4, SAT-1, SAT1, sulfate anion transporter AT1, sulfate anion transporter 1, sulfate/anion transporter SAT-1 protein

Official Symbol: SLC26A1

Accession Number(s): NP_071325.2; NP_602297.1

Human GeneID(s): [10861](#)

Important Comments: This antibody is expected to recognize reported isoform a (NP_071325.2) only. Reported variants represent identical protein: NP_998778.1, NP_071325.2

Immunogen

Peptide with sequence C-QTARARHRELEATD, from the C Terminus of the protein sequence according to NP_071325.2; NP_602297.1.

Please note the [peptide](#) is available for sale.

Purification and Storage

Purified from goat serum by ammonium sulphate precipitation followed by antigen affinity chromatography using the immunizing peptide.

Supplied at 0.5 mg/ml in Tris saline, 0.02% sodium azide, pH7.3 with 0.5% bovine serum albumin.

Aliquot and store at -20°C. Minimize freezing and thawing.

Applications Tested

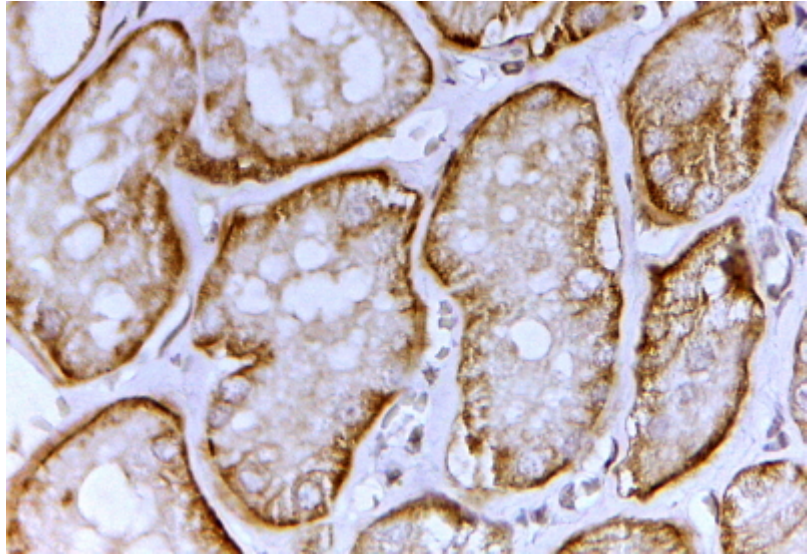
Peptide ELISA: antibody detection limit dilution 1:4000.

IHC: In paraffin embedded Human Kidney shows strong basal membrane staining in convoluted tubules. Recommended concentration, 2-4µg/ml.

Species Reactivity

Tested: Human

Expected from sequence similarity: Human



EB12127 (2 μ g/ml) staining of paraffin embedded Human Kidney. Steamed antigen retrieval with citrate buffer pH 6, HRP-staining.