



International Office

Everest Biotech Ltd

Vector Laboratories, Inc.
6737 Mowry Ave
Newark, CA 94560
United States

Customer Service:

customerservice@vectorlabs.com

Technical Service:

technical@vectorlabs.com

Tel: +1 (800) 227-6666

www.everestbiotech.com

**Research Use Only. Not for
diagnostic or therapeutic use.**

EB09929 - Goat Anti-SLC26A6 Antibody

Size: 100µg specific antibody in 200µl



Target Protein

Principal Names: anion transporter 1, DKFZp586E1422, pendrin L1, pendrin-like protein 1, solute carrier family 26, member 6, sulfate anion transporter, SLC26A6

Official Symbol: SLC26A6

Accession Number(s): NP_075062.2; NP_599025.2; NP_602298.2; NP_001035544.1

Human GeneID(s): [65010](#)

Non-Human GeneID(s): 171429 (mouse)

Important Comments: This antibody is expected to recognize isoform 1, 2, 3 and 4 (NP_075062.2; NP_599025.2; NP_602298.2; NP_001035544.1). Please note that this antibody was shown unfit for Mouse tissues both in IHC and WB.

Immunogen

Peptide with sequence C-SAPRTHQWRT, from the internal region of the protein sequence according to NP_075062.2; NP_599025.2; NP_602298.2; NP_001035544.1.

Please note the [peptide](#) is available for sale.

Purification and Storage

Purified from goat serum by ammonium sulphate precipitation followed by antigen affinity chromatography using the immunizing peptide.

Supplied at 0.5 mg/ml in Tris saline, 0.02% sodium azide, pH7.3 with 0.5% bovine serum albumin.

Aliquot and store at -20°C. Minimize freezing and thawing.

Applications Tested

Peptide ELISA: antibody detection limit dilution 1:8000.

Western blot: Approx 90kDa band observed in Human renal cortical brush-border membrane lysates (calculated MW of 83.0kDa according to NP_075062.2).

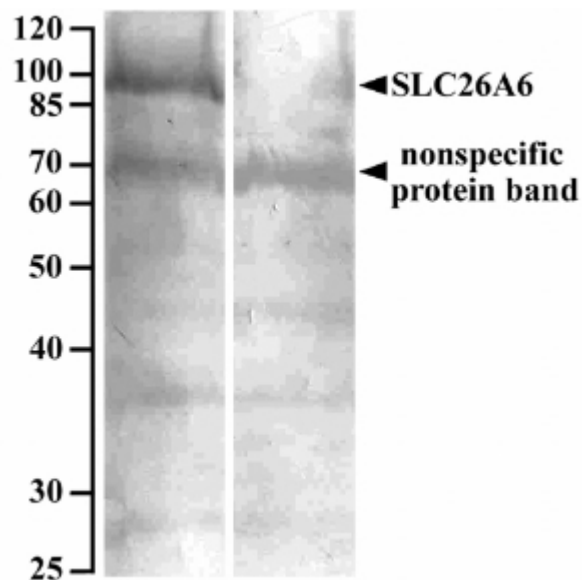
Recommended concentration: 10µg/ml for overnight incubation.

IHC: In paraffin embedded Human Kidney shows staining of brush borders along the entire proximal convoluted tubule. Recommended concentration, 0.1-0.3mg/ml. Please note the unusually low dilution required for this type of application!

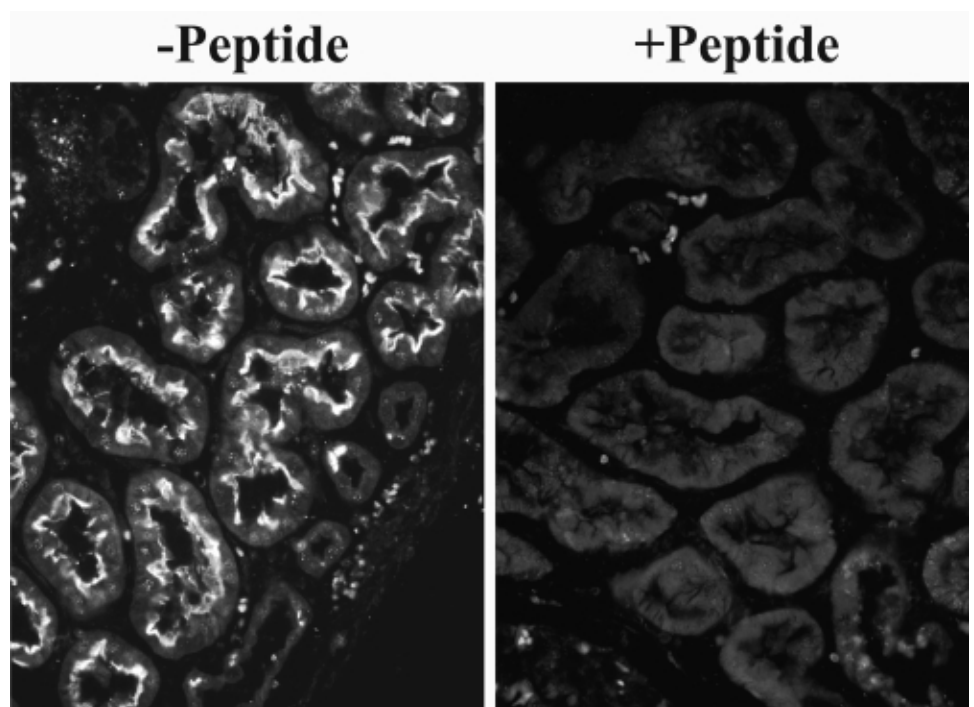
Species Reactivity

Tested: Human

Expected from sequence similarity: Human



EB09929 (10 μ g/ml) staining of Human renal cortical brush-border membrane lysate (90 μ g protein denatured at 37C for 30min) with (B) and without (A) blocking with the immunizing peptide. Primary incubation was overnight at 4C. Detected by NBT/BCIP. Data kindly provided by Dean Karaica, B. Sc., and Ivan Sabolic, M.D., Ph.D., Institute for Medical Research and Occupational Health, Zagreb, Croatia.



EB09929 (0.1mg/ml) overnight staining of paraffin embedded Human Kidney. Microwaved antigen retrieval with citrate buffer pH 6, CY3-staining. Data kindly provided by Dean Karaica, B. Sc., and Ivan Sabolic, M.D., Ph.D., Institute for Medical Research and Occupational Health, Zagreb, Croatia.