

## UK Office

### Everest Biotech Ltd

Cherwell Innovation Centre  
77 Heyford Park  
Upper Heyford  
Oxfordshire  
OX25 5HD  
UK

Enquiries:

[info@everestbiotech.com](mailto:info@everestbiotech.com)

Sales:

[sales@everestbiotech.com](mailto:sales@everestbiotech.com)

Tech support:

[support@everestbiotech.com](mailto:support@everestbiotech.com)

Tel: +44 (0)1869 238326

[www.everestbiotech.com](http://www.everestbiotech.com)

**Research Use Only. Not for  
diagnostic or therapeutic use.**

## EB10147 - Goat Anti-SLC2A4 Antibody

Size: 100µg specific antibody in 200µl



### Target Protein

**Principal Names:** glucose transporter 4, GLUT4, insulin-responsive glucose transporter type 4, solute carrier family 2 (facilitated glucose transporter), member 4, SLC2A4

**Official Symbol:** SLC2A4

**Accession Number(s):** NP\_001033.1

**Human GeneID(s):** [6517](#)

**Non-Human GeneID(s):** 20528 (mouse), 25139 (rat)

### Immunogen

Peptide with sequence C-NLEGPARKSLKRLT, from the internal region of the protein sequence according to NP\_001033.1.

Please note the [peptide](#) is available for sale.

### Purification and Storage

Purified from goat serum by ammonium sulphate precipitation followed by antigen affinity chromatography using the immunizing peptide.

Supplied at 0.5 mg/ml in Tris saline, 0.02% sodium azide, pH7.3 with 0.5% bovine serum albumin.

Aliquot and store at -20°C. Minimize freezing and thawing.

### Applications Tested

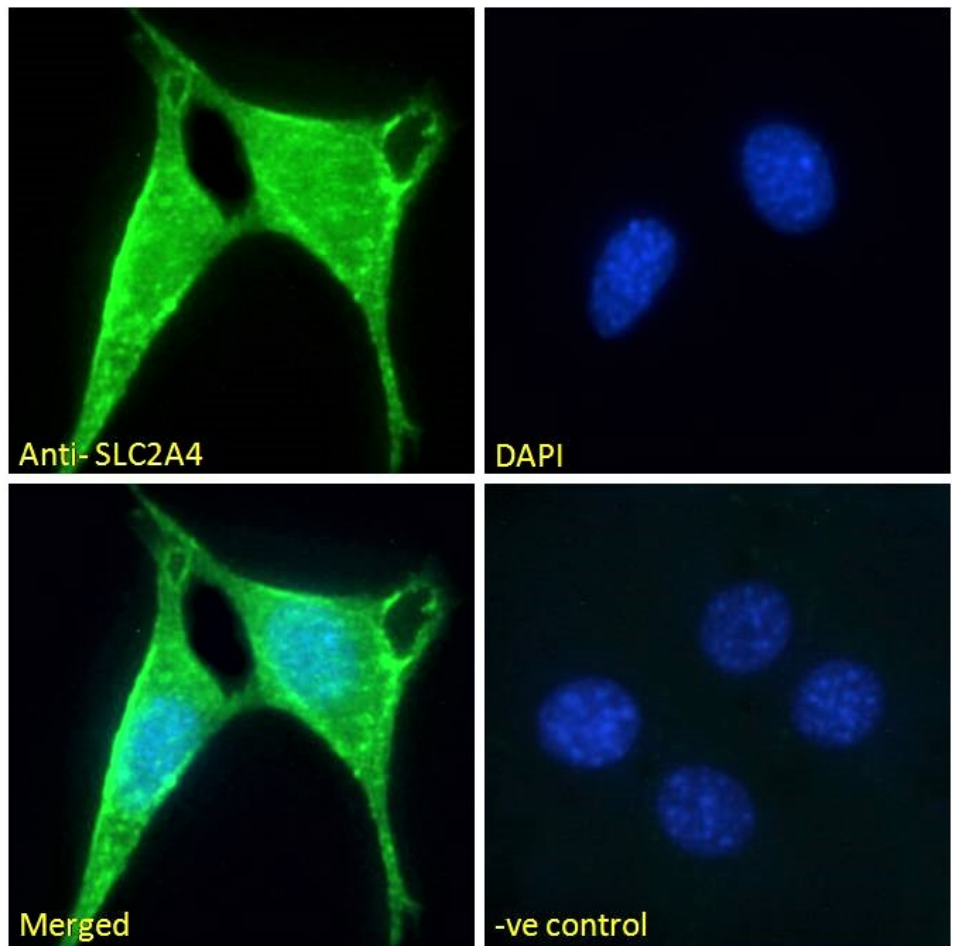
**Peptide ELISA:** antibody detection limit dilution 1:16000.

**Immunofluorescence:** Strong expression of the protein seen in the membrane and cytoplasm of NIH3T3 cells. Recommended concentration: 10µg/ml.

### Species Reactivity

**Tested:** Mouse

**Expected from sequence similarity:** Human, Mouse, Rat, Pig, Rabbit, Dog, Cow



EB10147 Immunofluorescence analysis of paraformaldehyde fixed NIH3T3 cells, permeabilized with 0.15% Triton. Primary incubation 1hr (10ug/ml) followed by Alexa Fluor 488 secondary antibody (2ug/ml), showing membrane and cytoplasmic staining. The nuclear stain is DAPI (blue). Negative control: Unimmunized goat IgG (10ug/ml) followed by Alexa Fluor 488 secondary antibody (2ug/ml).